

ORDERING

Please specify:

Voltage, frequency AC or DC

Fluid, pressure, temperature

plus

Reference number of subbase

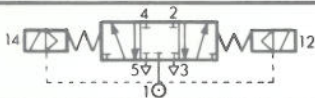
Any options*

541 220 V 50 Hz Air 7 bars 20°

OPTIONS

- 110 V DC
- Manual override by tester
- Solenoid IP65 type 129
- Solenoid 222 high pressure
- Solenoid 222 low consumption 1.5 W (ex LVZ)
- 3 position valves pressure held or pressure release

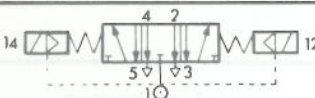
VALVE MONOSTABLE – 3 POSITIONS – PRESSURE HELD type W1



1 : Pressure
4,2 : Outlets
5,3 : Exhausts
14,12 : Pilot

Pilot operators		Orifice mm	Subbase			Pressure in valve in bars		Pilot Pressure		Manual override	REFERENCE NUMBERS				Valve alone** without solenoid
Pilot	Return		Ø BSP	KV*	CV	min.	max.	min.	max.		Pilot 222		Pilot 226		
Solenoid-air + spring	Solenoid-air + spring	6	G1/4	12	0,84	0	12	2,5	10	⊖	541 00 370	541 00 371	541 00 376	541 00 377	541 90 022
										⊞	541 00 372	541 00 373	541 00 378	541 00 379	
										⊕	541 00 374	541 00 375	541 00 380	541 00 381	
		12	G3/8 G1/2	29 31	2,03 2,17					⊖	541 00 454	541 00 455	541 00 460	541 00 461	541 90 029
										⊞	541 00 456	541 00 457	541 00 462	541 00 463	
										⊕	541 00 458	541 00 459	541 00 464	541 00 465	

VALVE MONOSTABLE – 3 POSITIONS – PRESSURE RELEASE type W3



1 : Pressure
4,2 : Outlets
5,3 : Exhausts
14,12 : Pilot

Solenoid-air + spring	Solenoid-air + spring	6	G1/4	12	0,84	0	12	2,5	10	⊖	541 00 382	541 00 383	541 00 388	541 00 389	541 90 023
										⊞	541 00 384	541 00 385	541 00 390	541 00 391	
										⊕	541 00 386	541 00 387	541 00 392	541 00 393	
		12	G3/8 G1/2	29 31	2,03 2,17					⊖	541 00 466	541 00 467	541 00 472	541 00 473	541 90 030
										⊞	541 00 468	541 00 469	541 00 474	541 00 475	
										⊕	541 00 470	541 00 471	541 00 476	541 00 477	

* KV in litres (water) per min. Δp 1 bar.

** Valve supplied with seal to fit solenoid.

NOTE : options will change the reference number on paperwork.