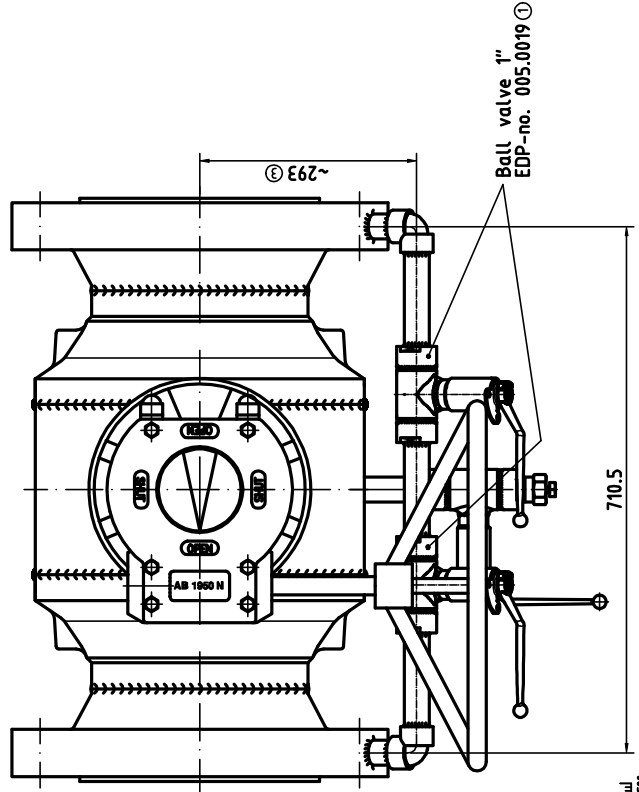
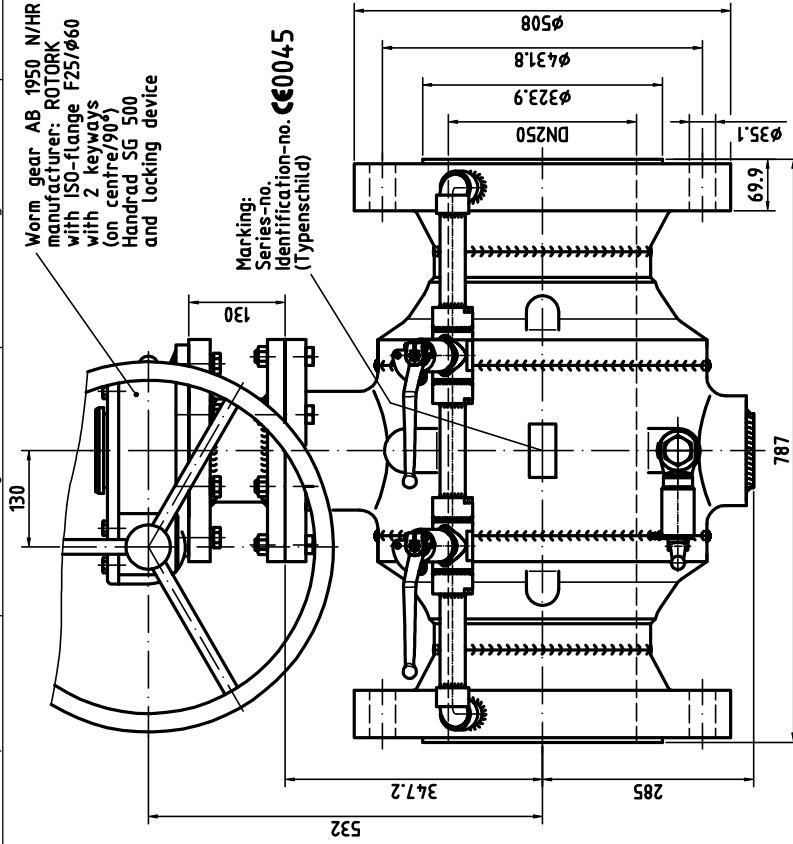


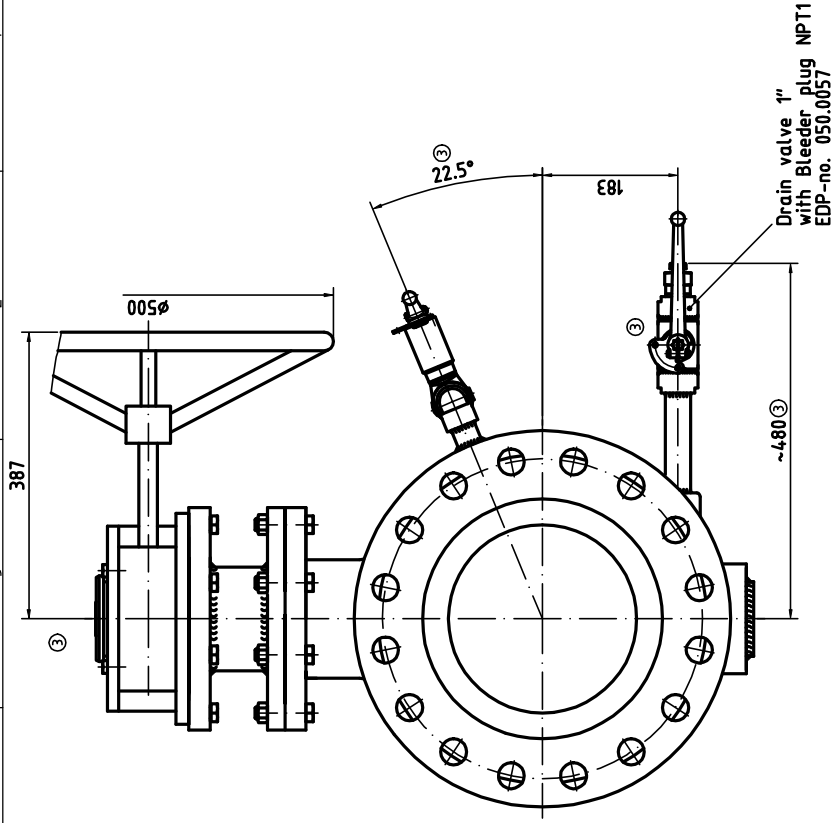
Worm gear AB 1950 N/HR
 manufacturer: ROTORK
 with ISO-flange F25/ø60
 with 2 keyways
 (on centre/90°)
 Handrad SG 500
 and locking device

Marking:
 Series-no.
 Identification-no. **CE0045**
 (Typenschild)



Ball valve 1"
 EDP-no. 005.0019 ①

KKS-no.:
 11MPB01AA508
 12MBP01AA508
 weight: ~575 kg



ENERJISA

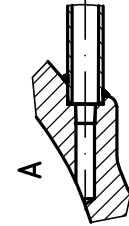
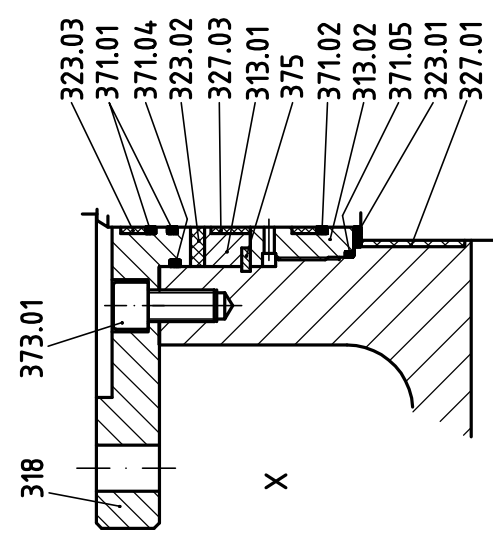
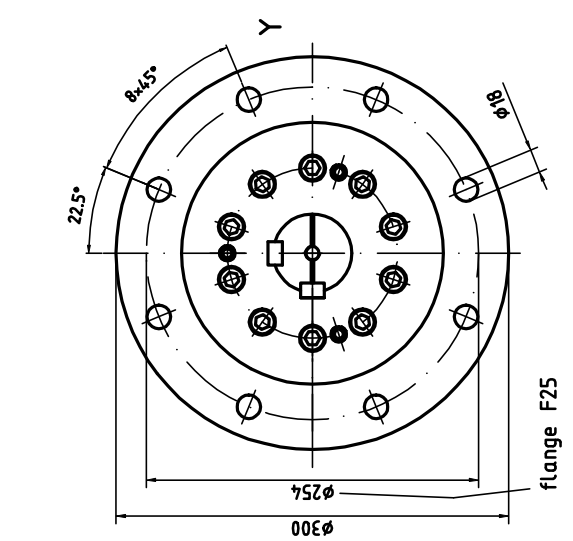
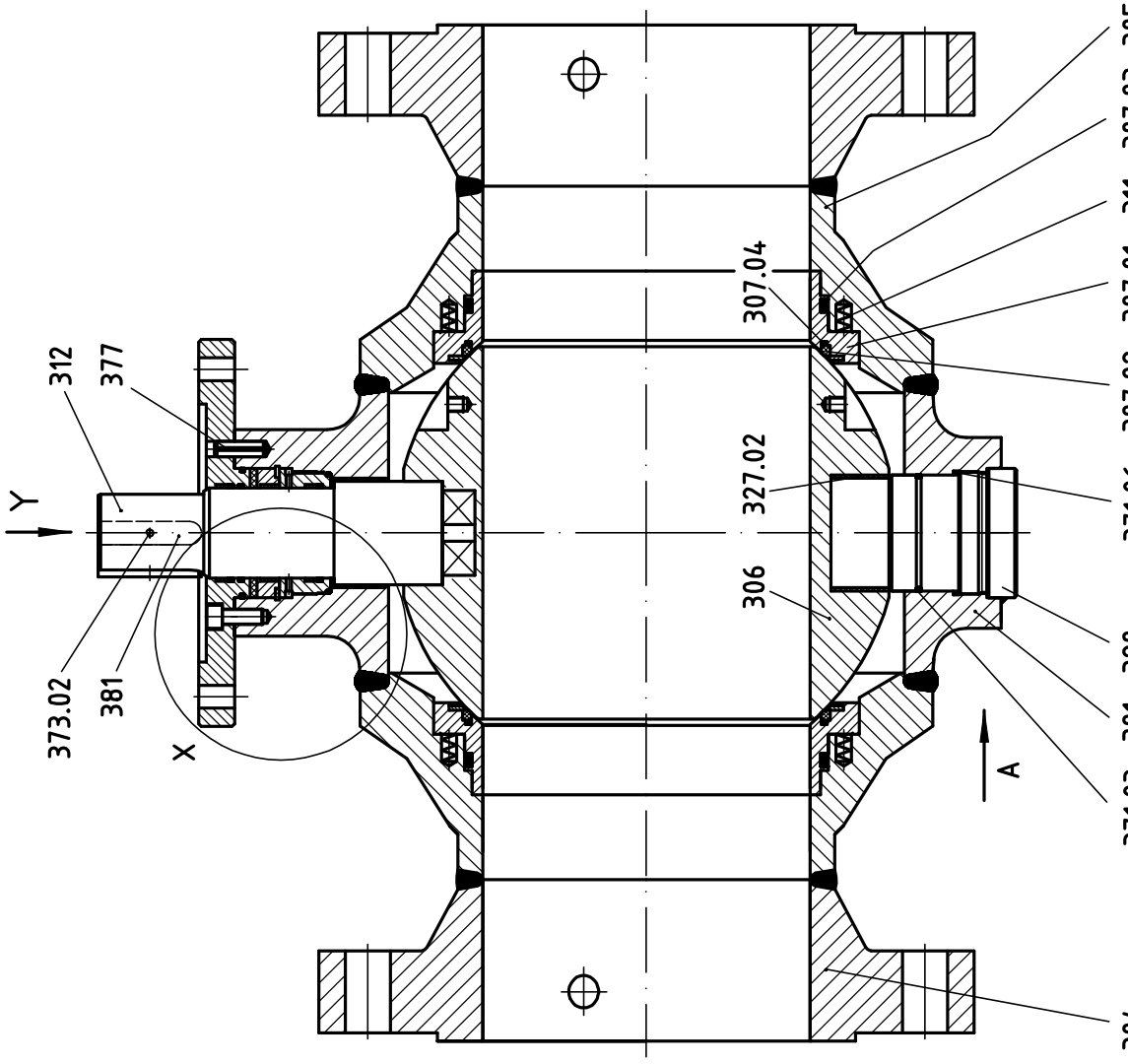
ATEC POWER PLANT
 SYSTEMS AG



MITSUBISHI HEAVY
 INDUSTRIES, LTD.

KKS		RECHNUNGSNUMMERNR. ZEICH.NR. REV.		SHEET / OF SHEET BLATT	
2009	DATE	NAME	MATERIAL	Page 1/3	
DRAWN	29.07.	DRG001016			
CHECKED					
MONTH					
REVISION	DATE	NAME			
Layer	added	005.0018			
KKS-no.	added	02.09.09			
WDS	added	02.09.09			
DATE	04.10				
SCALE	1:5				
DRAWING-N°:	Ball valve BBF/FSA V		DRAWING-N°:	9.085.250.316.00.04	
TYPE:	DN250 Class 600-RF		TYPE:	EG-type-tested	
TEMPERATURE:	TS -12.5°C up to +25°C / PS 42 bar		TEMPERATURE:	worm gear, locking device	
DOCU-N°:	0855277-04-GB-01-2D		DOCU-N°:	0855277-04-GB-01-2D	
EDP-N°:	085.35250100.5227		EDP-N°:	085.35250100.5227	
REPLACEMENT FOR:			REPLACEMENT FOR:		
REVISION BY:			REVISION BY:		

0 50 100 150 200 250 300 350 400 450 500



- gas-design according API 6D -
- nameplate and rivets: stainless steel -
- anti-static-design -
- free of non-ferrous metal -
- special coating -
- design temperature DT = -20°C up to +255°C (short time & static) -
- allowable working temperature TS = -19.5°C up to +215°C - ①
- allowable working pressure PS = 42 bar -

304 311.03 301 320 371.06 307.02 307.01 311 307.03 305

ENERJIS

MITSUBISHI HEAVY INDUSTRIES, LTD.
ATEC POWER PLANT SYSTEMS AG

KKS		ZECH.NE.REV.		BLAITT	
DATE		NAME		TITEL	
2007.03.14		T. REIBER		INTERNAL	
PAGE		DATE		PAGE 2/3	
42		15.11.07		DR.	
BALL VALVE		NAME		PROJEKT-NR.	
BB775A V		DN250 Class 600-RF		9.065.250.316.00.04	
TS -25 up to +215°C / PS 42 bar		TYPE		DR.-NR.	
CF 775A		WORK. SPEC.		005527-04-08-02-20	
WORK. SPEC. FOR BALL VALVE		SCALE		DR.-NR.	
and 130 mm stem extension		1:1		005.35250900.5227	

Prüfung		Prüfung genäh: PG 3	
Teil 5		Teil 5	
und API 6D		und API 6D	
mit Material-Prüfzeugnis		mit Material-Prüfzeugnis	
nach EN 10204-3/1.3.2		nach EN 10204-3/1.3.2	


7																				
6																				
5																				
4	WAS +200°C	04.01.10	Ko																	
3	design changes & dim. val. final/rev add:	30.09.09	Drag																	
2	KKS-no. added	02.09.09	Drag																	
1	Lever displace/was 005.0018	20.08.09	Bo																	
No	REVISION	DATE	NAME																	

BALL VALVE BBF/FSA V DN250 CLASS 600-RF TS -12.5°C up to +215°C / PS 42 bar EG-type-tested worm gear, locking device and 130 mm stem extension


DIN 1683	DIMENSIONS WITHOUT TOLERANCES ACC. TO:	DIN ISO 2768 1-14
ALL RIGHTS IN THIS DRAWING RESERVED, ALSO IN CASE OF PATENT OR DESIGN REGISTRATION	REPLACEMENT FOR:	REPLACED BY:
SCALE	NO.	DATE
%	2009	29.07.
CHECKED	DATE	NAME
NORM	DATE	NAME
	29.07.	Dragojlovic

BÖHMER
 Page 3/3
 MATERIAL
 DRAWING-Nr.: 9.085.250.316.00.04
 DOCU-Nr.: 0855227-04-GB-03-2D
 EDP-Nr.: 085.35250100.5227


Pos.-no.	Qty.	Part name	Material
381	2	Feather key	D18x11x70 DIN 6885
377	3	Spring dowel sleeve	ø12x40 ISO 8752
375	1	Retaining ring	100x3 DIN 472
373.02	2	Socket head screw	M6x12 DIN 7984
373.01	10	Socket head screw	M12x30 DIN 912
371.06	1	O-ring	91.67-3.53
371.05	1	O-ring	88.57-2.62
371.04	1	O-ring	93-3
371.03	1	O-ring	80-3
371.02	1	O-ring	69.5-3
371.01	2	O-ring	69.5-3
327.03	1	Bearing (supporting bearing)	ø75xø70x15
327.02	1	Bearing	ø90xø85x43
327.01	1	Bearing (main bearing)	ø85xø80x40
323.03	2	Bearing	ø75xø70x9.5
323.02	1	Packing ring	ø99.8xø70x5
323.01	1	Bearing	ø84.5xø70x2.5
320	1	Trunnion	
318	1	Flange (peg)	
313.02	1	Gland	Steel C 22.8 / P250GH (A105, mod.)
313.01	1	Stem bearing	Steel St 52-3 / S355J2+N
312	1	Stem	Stainless steel 14006 V
311	32	Spring	Stainless steel (high-temperature-construction)
307.04	2	O-ring	266.29-3.53
307.03	2	O-ring	259.7-6.99
307.02	2	Body seat ring	(Single-piston)
307.01	2	Support ring	EDP-no. 307.5488
306	1	Ball	Steel ASTN A350 LF2, hard chrome plated
305	2	Body closure	Steel TSTE 355 / P355NL1 (A350 LF2)
304	2	Flange	Steel TSTE 355 / P355NL1 (A350 LF2)
301	1	Body	Steel TSTE 355 / P355NL1 (A350 LF2)



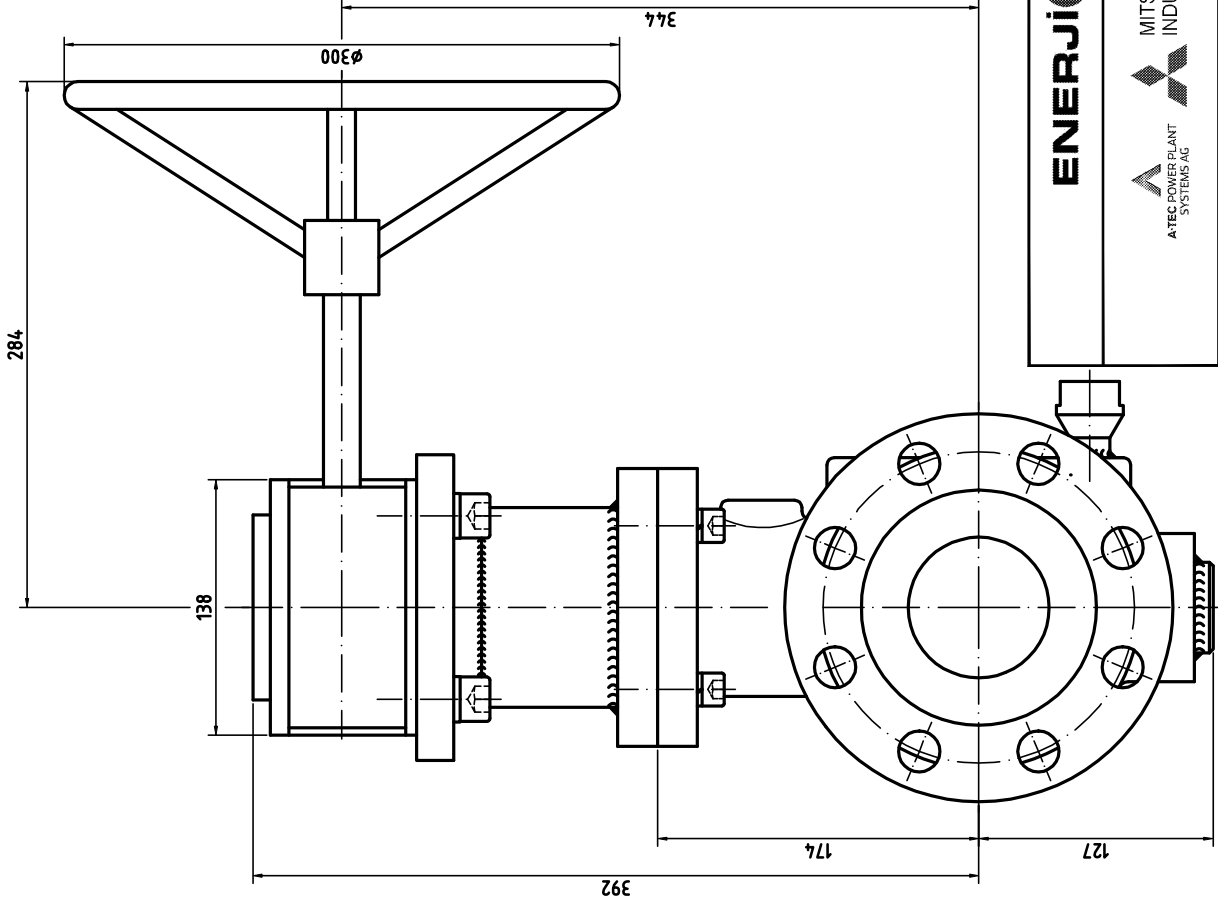
MITSUBISHI HEAVY INDUSTRIES, LTD.



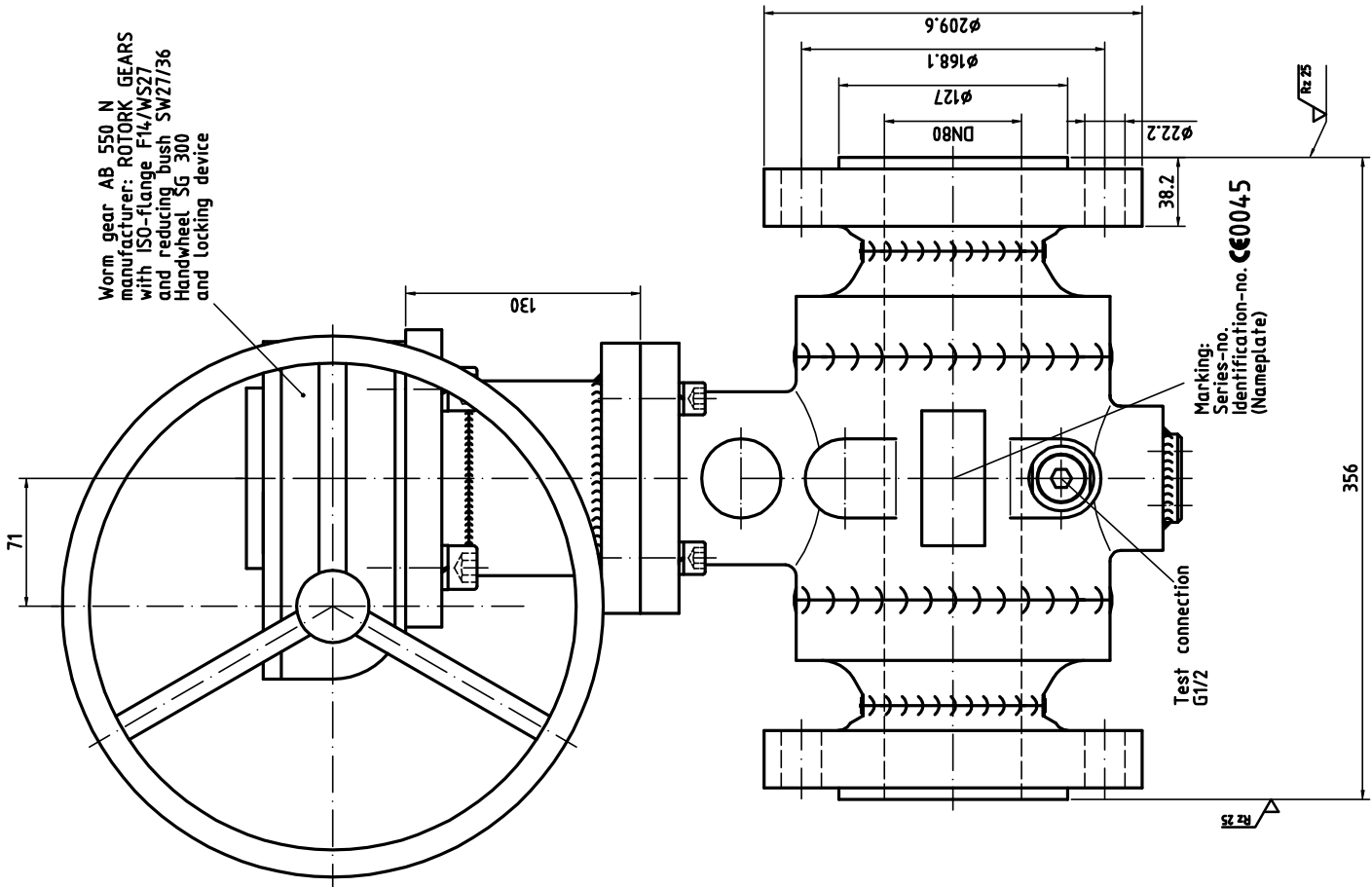
ATEC POWER PLANT SYSTEMS AG



ENERJIS



Worm gear AB 550 N
 manufacturer: ROTORK GEARS
 with ISO-flange F14/WS27
 and reducing bush SW27/36
 Handwheel SG 300
 and locking device



Marking:
 Series-no. **CE0045**
 Identification-no. (Nameplate)

Test connection
 G1/2

ENERJISA

ATEC POWER PLANT
 SYSTEMS AG
 MITSUBISHI HEAVY
 INDUSTRIES, LTD.

REF. DOC. KKS		REVISIONS		REVISION		DATE		NAME		MATERIAL		Page 1/3	
1	02.09.09	added											
2	02.09.09	changed											
3	02.09.09	changed											
4	02.09.09	changed											
5	02.09.09	changed											
6	02.09.09	changed											
7	02.09.09	changed											
8	02.09.09	changed											
9	02.09.09	changed											
10	02.09.09	changed											
11	02.09.09	changed											
12	02.09.09	changed											
13	02.09.09	changed											
14	02.09.09	changed											
15	02.09.09	changed											
16	02.09.09	changed											
17	02.09.09	changed											
18	02.09.09	changed											
19	02.09.09	changed											
20	02.09.09	changed											
21	02.09.09	changed											
22	02.09.09	changed											
23	02.09.09	changed											
24	02.09.09	changed											
25	02.09.09	changed											
26	02.09.09	changed											
27	02.09.09	changed											
28	02.09.09	changed											
29	02.09.09	changed											
30	02.09.09	changed											
31	02.09.09	changed											
32	02.09.09	changed											
33	02.09.09	changed											
34	02.09.09	changed											
35	02.09.09	changed											
36	02.09.09	changed											
37	02.09.09	changed											
38	02.09.09	changed											
39	02.09.09	changed											
40	02.09.09	changed											
41	02.09.09	changed											
42	02.09.09	changed											
43	02.09.09	changed											
44	02.09.09	changed											
45	02.09.09	changed											
46	02.09.09	changed											
47	02.09.09	changed											
48	02.09.09	changed											
49	02.09.09	changed											
50	02.09.09	changed											
51	02.09.09	changed											
52	02.09.09	changed											
53	02.09.09	changed											
54	02.09.09	changed											
55	02.09.09	changed											
56	02.09.09	changed											
57	02.09.09	changed											
58	02.09.09	changed											
59	02.09.09	changed											
60	02.09.09	changed											
61	02.09.09	changed											
62	02.09.09	changed											
63	02.09.09	changed											
64	02.09.09	changed											
65	02.09.09	changed											
66	02.09.09	changed											
67	02.09.09	changed											
68	02.09.09	changed											
69	02.09.09	changed											
70	02.09.09	changed											
71	02.09.09	changed											
72	02.09.09	changed											
73	02.09.09	changed											
74	02.09.09	changed											
75	02.09.09	changed											
76	02.09.09	changed											
77	02.09.09	changed											
78	02.09.09	changed											
79	02.09.09	changed											
80	02.09.09	changed											
81	02.09.09	changed											
82	02.09.09	changed											
83	02.09.09	changed											
84	02.09.09	changed											
85	02.09.09	changed											
86	02.09.09	changed											
87	02.09.09	changed											
88	02.09.09	changed											
89	02.09.09	changed											
90	02.09.09	changed											
91	02.09.09	changed											
92	02.09.09	changed											
93	02.09.09	changed											
94	02.09.09	changed											
95	02.09.09	changed											
96	02.09.09	changed											
97	02.09.09	changed											
98	02.09.09	changed											
99	02.09.09	changed											
100	02.09.09	changed											

KKS-no.:
 11MBP01AA506
 12MBP01AA506
 11MBP01AA507
 12MBP01AA507
 weight: ~101 kg

ENERJISA
 MITSUBISHI HEAVY
 INDUSTRIES, LTD.

Ball valve BBF/FSA V
 DN80
 Class 600-RF
 TS -125°C up to +25°C / PS 42 bar
 with material-certificate 3.1/3.2
 worm gear, locking device
 and 130 mm stem extension

REVISIONS
 NO. DATE NAME DESCRIPTION

DATE CHECKED MONTH

SCALE 1:2

REVISIONS
 NO. DATE NAME DESCRIPTION

DATE CHECKED MONTH

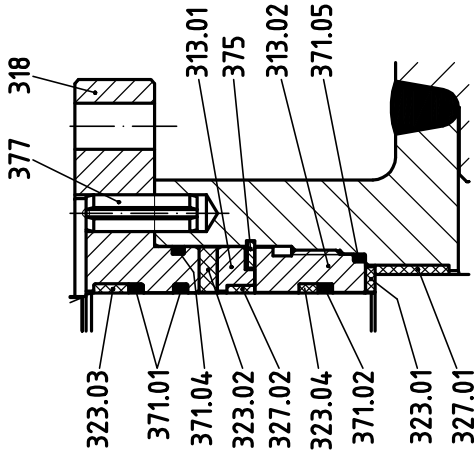
SCALE 1:2

REVISIONS
 NO. DATE NAME DESCRIPTION

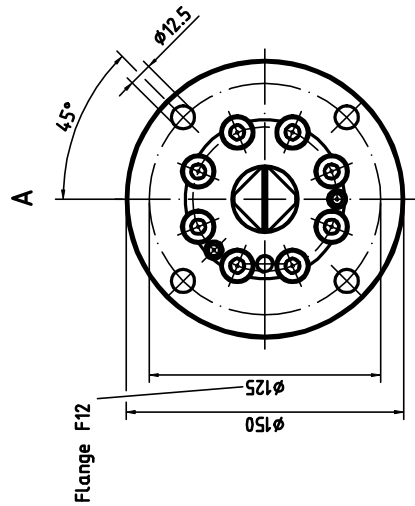
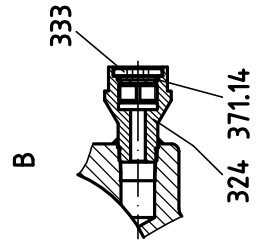
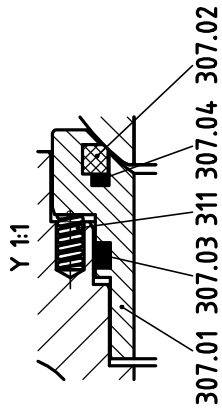
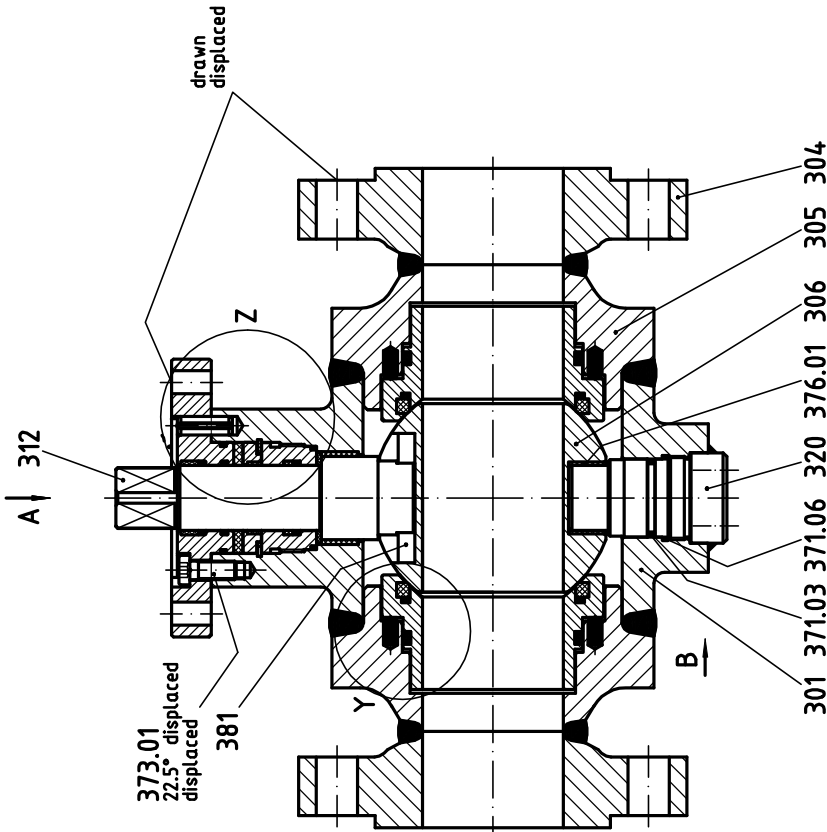
0 20 40 60 80 100 120 140 160 180 200

REF. DOC. **KKS** ZEICH.NR.REV. **BLATT**
 MATERIAL Page 1/3
 DRAWING-N°: 9.085.080.185.00.02
 DOCU-N°: 0855278-02-GB-01-2D
 EDP-N°: 085.35080100.5228

Z 1:1



- gas-design according API 6D -
- nameplate and rivets: stainless steel -
- anti-static-design -
- free of non-ferrous metal -
- special coating -
- design temperature DT = -20°C up to +255°C (short time & statical) -
- allowable working temperature IS = -12.5°C up to +215°C - ②
- allowable working pressure PS = 42 bar -



ENERJISA

ATEC POWER PLANT SYSTEMS AG
MITSUBISHI HEAVY INDUSTRIES, LTD.

REF / DOC		RECHNUNGSGRADENO. BY		SHEET / OF SHEET	
KKS		ZEICH.NR.REV.		BLATT	
2009	DATE	NAME	MATERIAL	Page 2/3	
DRAWN	DATE	DATE	DATE	BOHMER	
CHECKED	DATE	DATE	DATE	DRAWING-N°:	
MONTH	SCALE	9.085.080.185.00.02			
SCALE	SCALE	DRAWING-N°:			
1:2	1:2	9.085.080.185.00.02			
REVISION	REVISION	DOCU-N°:			
NO. DATE	NO. DATE	0855278-02-GB-02-2D			
1 02.09.09	1 02.09.09	REVISION FOR:			
2 04.01.10	2 04.01.10	REVISION FOR:			
3 KKS-no. added	3 KKS-no. added	REVISION FOR:			
4 KKS+no.	4 KKS+no.	REVISION FOR:			
5 +200°C	5 +200°C	REVISION FOR:			
6	6	REVISION FOR:			
7	7	REVISION FOR:			
8	8	REVISION FOR:			
9	9	REVISION FOR:			
10	10	REVISION FOR:			
11	11	REVISION FOR:			
12	12	REVISION FOR:			
13	13	REVISION FOR:			
14	14	REVISION FOR:			
15	15	REVISION FOR:			
16	16	REVISION FOR:			
17	17	REVISION FOR:			
18	18	REVISION FOR:			
19	19	REVISION FOR:			
20	20	REVISION FOR:			

Test content

Tests according:
 DIN 3230 part 5 PG 3
 and API 60

⊕ with material-test certificate
 according EN 10204-3-1/3.2

0 20 40 60 80 100 120 140 160 180 200

