

Serie Ghilux

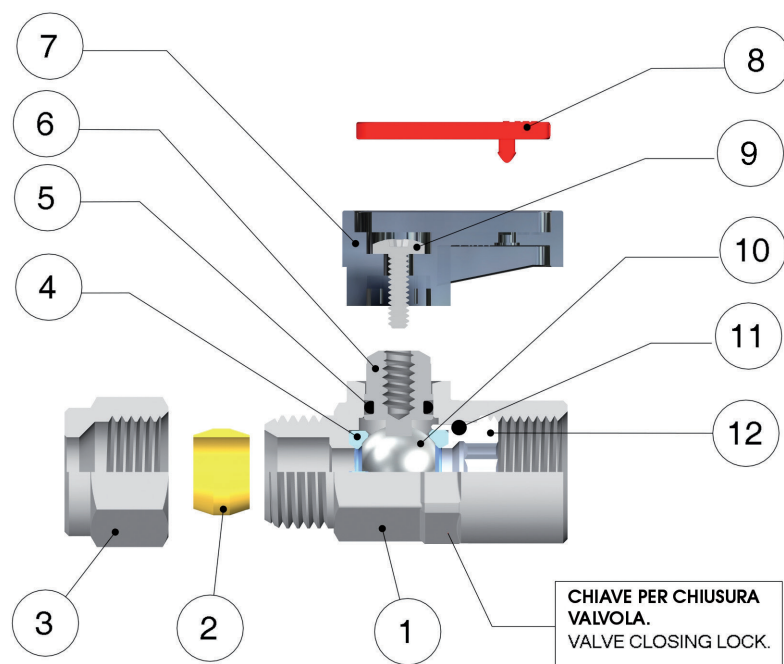
 6300 Pag. 10.7	 6310 Pag. 10.7	 6320 Pag. 10.7	 6330 Pag. 10.7	 6340 Pag. 10.8	 6350 Pag. 10.8	 6400 Pag. 10.8	 6410 Pag. 10.8	 6420 Pag. 10.9
 6430 Pag. 10.9	 6440 Pag. 10.9	 6450 Pag. 10.10	 6460 Pag. 10.10	 6470 Pag. 10.10	 6490 Pag. 10.10	 6500 Pag. 10.11	 6540 Pag. 10.11	 6560 Pag. 10.11
 6570 Pag. 10.11	 6600 Pag. 10.11	 6700 Pag. 10.12-10.13	 6710 Pag. 10.12-10.13	 6720 Pag. 10.12-10.13	 6900 Pag. 10.14	 6910 Pag. 10.14	 6915 Pag. 10.14	 6920 Pag. 10.14
 6680 Pag. 10.15	 10740 Pag. 10.15	 10741 Pag. 10.15	 10760 Pag. 10.15	 10761 Pag. 10.15	 6065 Pag. 10.16	 6066 Pag. 10.16	 6067 Pag. 10.18	 6068 Pag. 10.18
 6069 Pag. 10.19	 6035 Pag. 10.19	 6036 Pag. 10.19	 6037 Pag. 10.19	 6038 Pag. 10.19				



Serie Ghilux

VALVOLE A SFERA - BALL VALVES



Caratteristiche Tecniche / Technical Characteristics


**FKM A RICHIESTA
IF REQUESTED FKM**

BS EN 331:1998

**Tested by GL to
BS EN 331:1998**

CHIAVE PER CHIUSURA
VALVOLA.
VALVE CLOSING LOCK.

Materiali e Componenti / Component Parts and Materials

- | | |
|---|---|
| 1 Corpo in Ottone cromato | 1 Chrome Nickel-plated Brass Body |
| 2 Ogiva in Ottone (PTFE a richiesta) | 2 Brass Olive (if Requested PTFE) |
| 3 Dado in Ottone cromato | 3 Chrome Nickel-plated Brass Nut |
| 4 Guarnizione sede sfera in PTFE | 4 PTFE Seats |
| 5 Guarnizione O-RING in NBR 70 (FKM a richiesta) | 5 NBR 70 Seal O-RING (FKM if required) |
| 6 Albero in Ottone cromato | 6 Chrome Nickel-plated Brass Spindle |
| 7 Maniglia in PA66 Caricato vetro | 7 PA66 Glass reinforced Handle |
| 8 Piastrina in Resina Acetalica | 8 Acetalic resin Plate |
| 9 Vite in acciaio | 9 Steel Screw |
| 10 Sfera in Ottone cromato | 10 Chrome Nickel-plated Brass Ball |
| 11 Guarnizione O-RING in NBR 70 (FKM a richiesta) | 11 NBR 70 Seal O-RING (FKM if required) |
| 12 Ghiera o raccordo in Ottone | 12 Brass Fitting |

Pressioni / Pressures

Pressione minima / Minimum Pressure: -0.99 bar (-0.099MPa)
Pressione massima / Maximum pressure: 20 bar (2 MPa)

Filettature / Threads

Gas conica conforme ISO 7.1, BS 21, DIN 2999
Tapered gas in conformity with ISO 7.1, BS 21, DIN 2999.
Gas cilindrica conforme ISO 228 Classe A
Parallel gas in conformity with ISO 228 Class A.

Tubi di collegamento / Connection Tubes

Tubi in rame, tubi metallici in genere, raccorderia varia.
PA6, PA11, PA12, Polietilene, *Poliuretano, PTFE, FEP utilizzando
l'apposita bussolina di rinforzo (art. 10770).
*Per tubi in Poliuretano é consigliata una durezza di 98 shore.

Tubes made in copper, metal in general and various fittings.
PA6, PA11, PA12, Polyethylene, *Polyurethane, PTFE, FEP with
an inside support bush art 10770.
*For Polyurethane hoses it is required a minimum hardness of
98 shore.

Temperature / Temperatures

Temperatura minima / Minimum temperature: -20 °C
Temperatura massima / Maximum temperature: +80 °C

Con Guarnizioni FKM / With FKM Seals

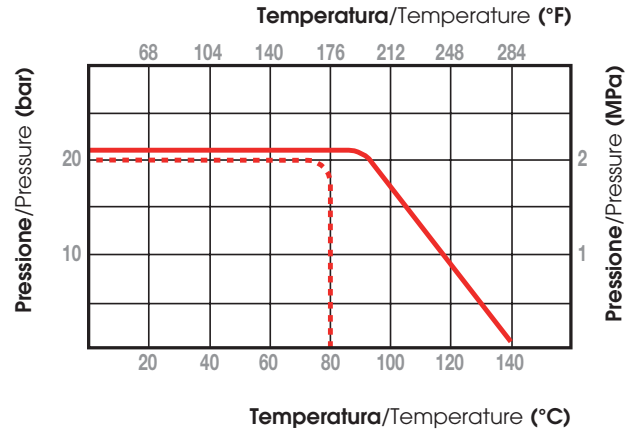
Temperatura minima / Minimum temperature: -15 °C
Temperatura massima / Maximum temperature: +130 °C

Fluidi compatibili / Fluids

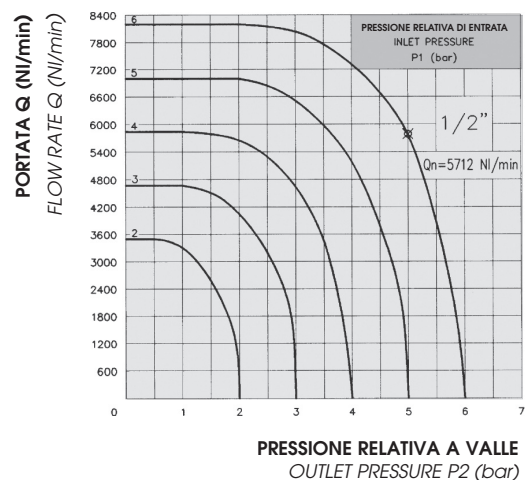
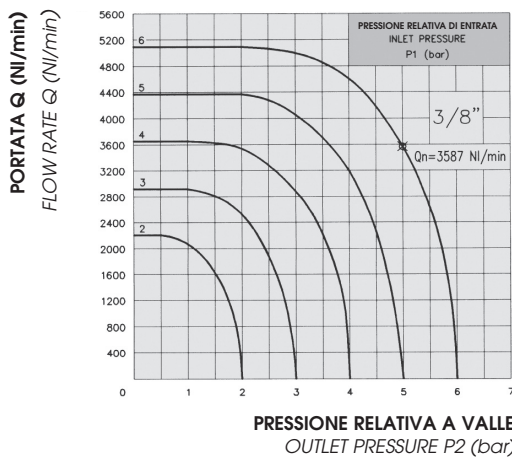
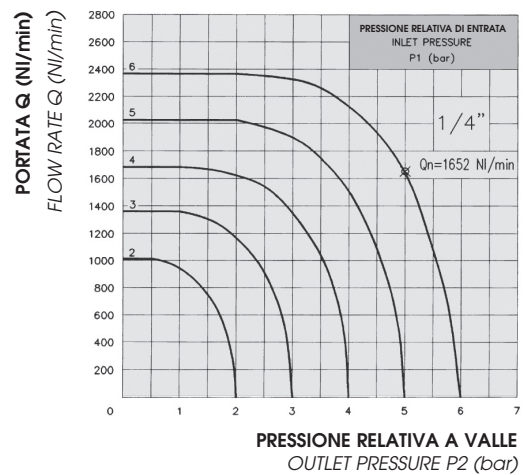
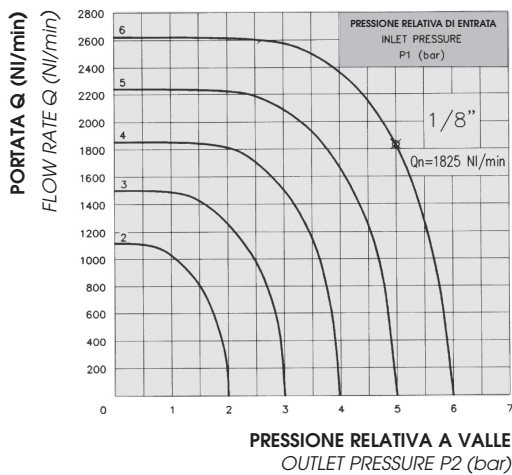
Aria compressa, acqua, oli.
*1° e 2° famiglia di gas a media pressione.
3° famiglia di gas a bassa pressione.
Compressed air, water, oils.
*1st and 2nd family gases at medium pressure.
3rd family gases at low pressure.

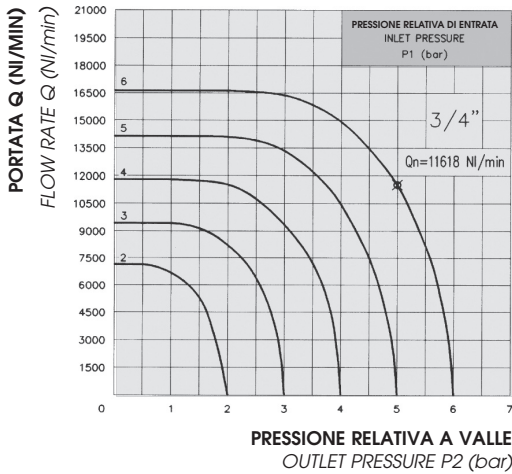
DIAGRAMMA PRESSIONE-TEMPERATURA
 PRESSURE-TEMPERATURE RATINGS DIAGRAM

- PTFE + NBR
- PTFE + FKM



CURVE CARATTERISTICHE DI FLUSSO PER ARIA
 RELATIVE ALLE VALVOLE A SFERA GHILUX ART. 6400 FEMMINA-FEMMINA
 CHARACTERISTIC CURVES OF FLOW FOR AIR
 PERTINENT TO THE BALL VALVES GHILUX ART. 6400 FEMALE-FEMALE





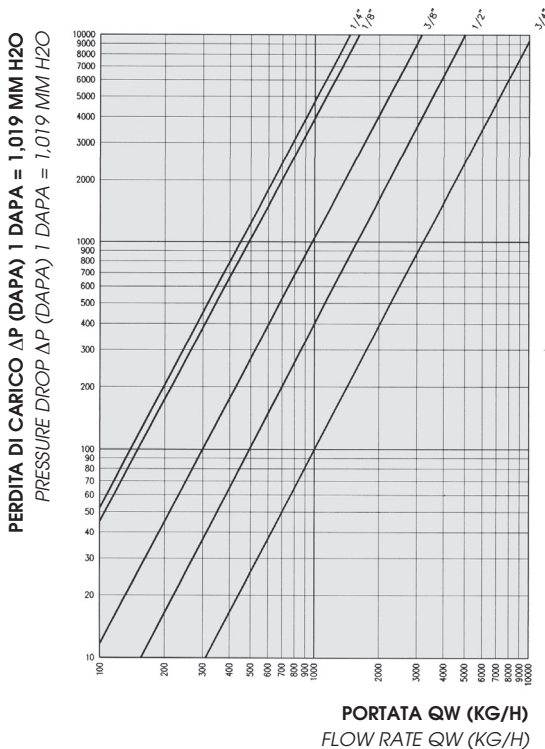
Sui vari diagrammi é evidenziato il valore di Q_n relativo ad una pressione $P_1 = 6$ bar e ad una pressione $P_2 = 5$ bar.

On the different diagrams is marked the value of flow rate Q_n pertinent to a pressure $P_1 = 6$ bar and to a pressure $P_2 = 5$ bar.

CERTIFICATO DI PROVA N° 36794 RILASCIATO DALL' "ISTITUTO GIORDANO" IN DATA 13/06/1990.

TEST CERTIFICATE N° 36794 ISSUED BY THE "ISTITUTO GIORDANO" ON THE 13/06/1990.

DIAGRAMMA DELLA CARATTERISTICA PORTATA-PERDITA DI CARICO RELATIVO ALLE VALVOLE A SFERA GHILUX ART. 6400 FEMMINA-FEMMINA PER ACQUA
DIAGRAM OF THE FLOW RATE AND PRESSURE DROP CHARACTERISTICS PERTINENT TO THE BALL VALVES GHILUX ART. 6400 FEMALE-FEMALE FOR WATER



COEFFICIENTI DI PORTATA Kv
FLOW RATE FACTORS Kv

Riportiamo in tabella il coefficiente di portata K_v delle valvole a sfera GHILUX, ricordando che tale coefficiente rappresenta la quantità d'acqua che attraversa la valvola nell'unità di tempo (Kg/h) alla temperatura di 15.5° C e che determina una caduta di pressione unitaria.

On the following table we specify the flow rate factor K_v of the ball valves GHILUX, we remind You that this factor represent the quantity of water that cross the valve in the unit time (Kg/h) at the temperature of 15.5° C and it determines a drop of unitary pressure.

Misura Size	Coefficiente di Portata Idraulica Factor of hydraulic flow rate K_v (Kg/h)
1/8"	1614
1/4"	1461
3/8"	3164
1/2"	5051
3/4"	10274

CERTIFICATO DI PROVA N. 36547
TEST CERTIFICATE N. 36547

RILASCIATO DALL' "ISTITUTO GIORDANO" IN DATA 31/05/1990
ISSUED BY THE "ISTITUTO GIORDANO" ON THE 31/05/199

COME ORDINARE

Le valvole a sfera standard della serie GHILUX prevedono:

- Trattamento superficiale di CROMATURA
- Ogiva in OTTONE
- Maniglia CORTA
- Piastrina ROSSA

Gli articoli standard possono essere ordinati specificando solo CODICE, MISURA, QUANTITA'.

Ogni variazione allo standard deve essere specificata sull'ordine mediante una descrizione (es. Maniglia Lunga, Piastrina Verde, ecc.).

HOW TO ORDER

The ball valves GHILUX series are supplied with:

- Surface treatment of CHROME-NICKEL PLATED
- BRASS Olive
- SHORT Handle
- RED Plate

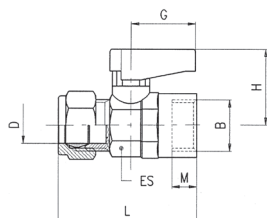
To order the standard items simply specify the ARTICLE CODE, SIZE and QUANTITY.

Every kind of changes must be specified on the order using a description (ex. LONG handle, GREEN plate, etc.).

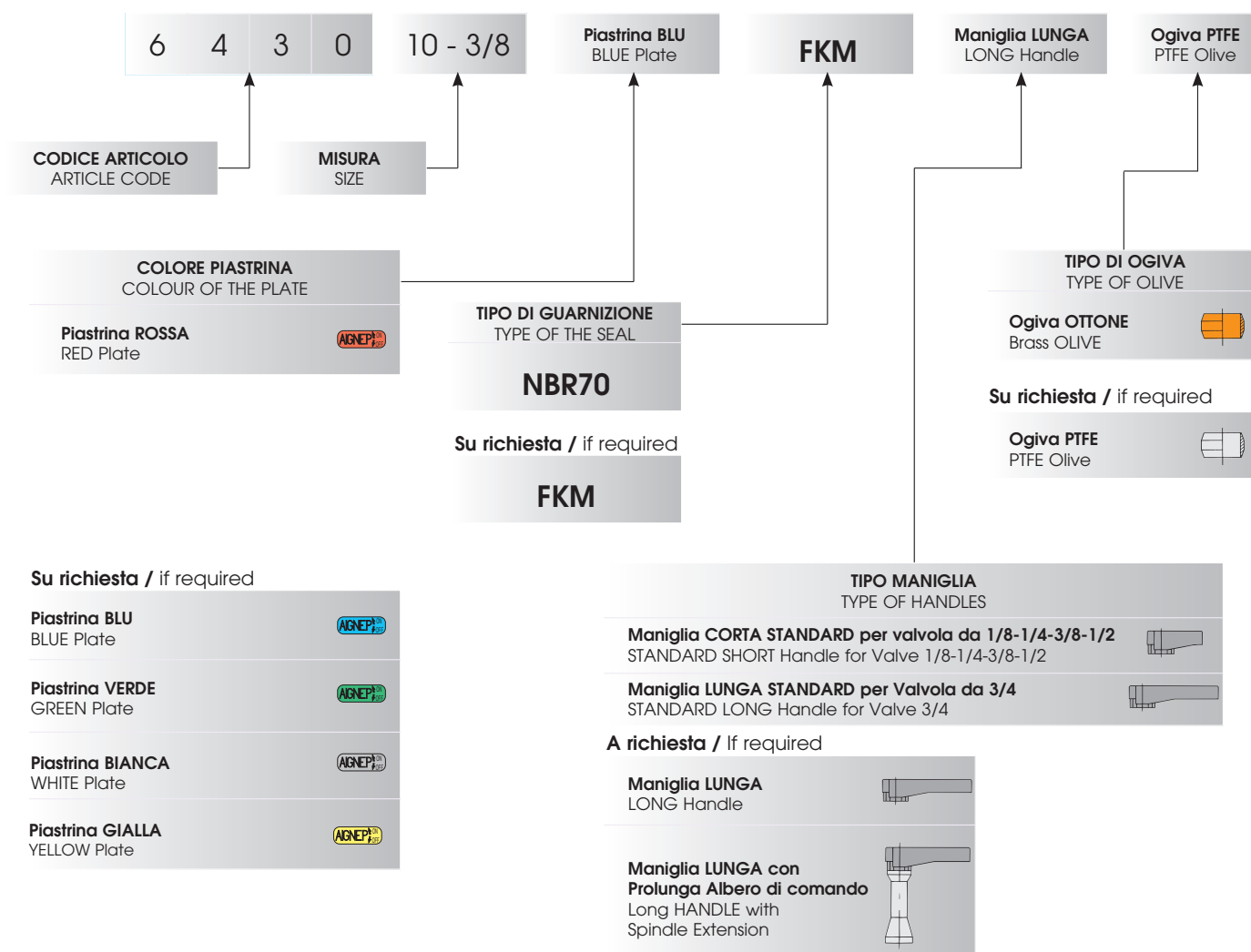
6430

VALVOLA TUBO - FEMMINA G ISO 228 (MANIGLIA STANDARD - PIASTRINA ROSSA)

TUBE - FEMALE G ISO 228 VALVE (STANDARD HANDLE - RED PLATE)

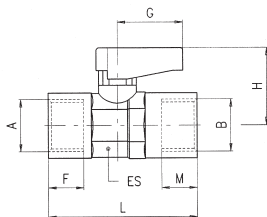


Codice Code	D	B	DN	ES	M	L	G	H	Conf. Pack.
0643000001	6	1/8	5.5	14-15	7	41	19	21	25
0643000002	8	1/8	5.5	14-15	7	43	19	21	25
0643000003	8	1/4	5.5	14-15	8	43	19	21	25
0643000004	10	3/8	8	18-19	9	48	19	22	10
0643000005	12	3/8	8	18-19	9	49	19	22	10
0643000006	14	1/2	10	22-23	10	55.5	26	30.5	10
0643000007	15	1/2	10	22-23	10	55.5	26	30.5	10
0643000098	16	3/4	14	28-30	12	63.5	50	33	5
0643000099	18	3/4	14	28-30	12	63.5	50	33	5



6300

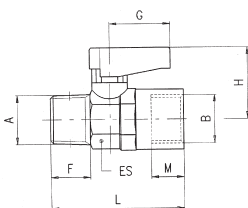
VALVOLA FEMMINA RP ISO 7 - FEMMINA RP ISO 7 (MANIGLIA STANDARD - PIASTRINA ROSSA)
 FEMALE RP ISO 7 - FEMALE RP ISO 7 VALVE (STANDARD HANDLE - RED PLATE)



Codice Code	A	B	DN	ES	F	M	L	G	H	Conf. Pack.
063000001	1/8	1/8	5.5	14-15	7.4	7.4	36	19	21	25
063000002	1/4	1/4	5.5	14-15	11	11	43	19	21	25
063000003	3/8	3/8	8	18-19	11.4	11.4	47	19	22	10
063000004	1/2	1/2	10	22-23	15	15	59	26	30.5	10
063000005	3/4	3/4	14	28-30	16.3	16.3	67	50	33	5

6310

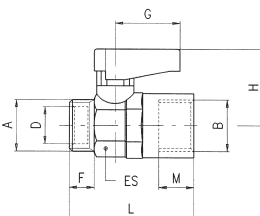
VALVOLA MASCHIO CONICO R ISO 7 - FEMMINA RP ISO 7 (MANIGLIA STANDARD - PIASTRINA ROSSA)
 TAPER MALE R ISO 7 - FEMALE RP ISO 7 VALVE (STANDARD HANDLE - RED PLATE)



Codice Code	A	B	DN	ES	F	M	L	G	H	Conf. Pack.
063100001	1/8	1/8	5.5	14-15	7.4	7.4	36	19	21	25
063100002	1/4	1/8	5.5	14-15	11	7.4	40.5	19	21	25
063100003	1/4	1/4	5.5	14-15	11	11	43	19	21	25
063100004	3/8	3/8	8	18-19	11.4	11.4	46	19	22	10
063100005	1/2	1/2	10	22-23	15	15	57	26	30.5	10
063100006	3/4	3/4	14	28-30	16.3	16.3	63	50	33	5

6320

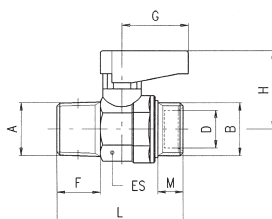
VALVOLA MASCHIO CILINDRICO GA ISO 228 - FEMMINA RP ISO 7 (MANIGLIA STANDARD - PIASTRINA ROSSA)
 PARALLEL MALE GA ISO 228 - FEMALE RP ISO 7 VALVE (STANDARD HANDLE - RED PLATE)



Codice Code	A	B	DN	ES	D	F	M	L	G	H	Conf. Pack.
063200001	1/8	1/8	5.5	14-15	6.2	7	7.4	34.5	19	21	25
063200002	1/4	1/8	5.5	14-15	8.2	8	7.4	35.5	19	21	25
063200003	1/4	1/4	5.5	14-15	8.2	8	11	38	19	21	25
063200004	3/8	3/8	8	18-19	10.2	9	11.4	41.5	19	22	10
063200005	1/2	1/2	10	22-23	15.2	10	15	50	26	30.5	10
063200006	3/4	3/4	14	28-30	18.2	12	16.3	56.5	50	33	5

6330

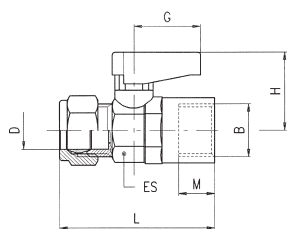
VALVOLA MASCHIO CONICO R ISO 7 - MASCHIO CILINDRICO GA ISO 228 (MANIGLIA STANDARD - PIASTRINA ROSSA)
 TAPER MALE R ISO 7 - PARALLEL MALE GA ISO 228 VALVE (STANDARD HANDLE - RED PLATE)



Codice Code	A	B	DN	ES	D	F	M	L	G	H	Conf. Pack.
063300001	1/8	1/8	5.5	14-15	6.2	7.4	7	33.5	19	21	25
063300002	1/8	1/4	5.5	14-15	8.2	7.4	8	33.5	19	21	25
063300003	1/4	1/8	5.5	14-15	6.2	11	7	38	19	21	25
063300004	1/4	1/4	5.5	14-15	8.2	11	8	38	19	21	25
063300005	3/8	3/8	8	18-19	10.2	11.4	9	41.5	19	22	10
063300006	1/2	1/2	10	22-23	15.2	15	10	49	26	30.5	10
063300007	3/4	3/4	14	28-30	18.2	16.3	12	55.5	50	33	5

6340

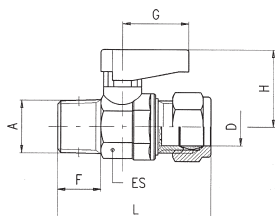
VALVOLA TUBO - FEMMINA RP ISO 7 (MANIGLIA STANDARD - PIASTRINA ROSSA)
TUBE - FEMALE RP ISO 7 VALVE (STANDARD HANDLE - RED PLATE)



Codice Code	D	B	DN	ES	M	L	G	H	Conf. Pack.
0634000001	6	1/8	5.5	14-15	7.4	41.5	19	21	25
0634000002	8	1/8	5.5	14-15	7.4	43	19	21	25
0634000003	8	1/4	5.5	14-15	11	46	19	21	25
0634000004	10	3/8	8	18-19	11.4	50.5	19	22	10
0634000005	12	3/8	8	18-19	11.4	51.5	19	22	10
0634000006	14	1/2	10	22-23	15	61.5	26	30.5	10
0634000007	15	1/2	10	22-23	15	61.5	26	30.5	10
0634000098	16	3/4	14	28-30	16.3	68	50	33	5
0634000099	18	3/4	14	28-30	16.3	68	50	33	5

6350

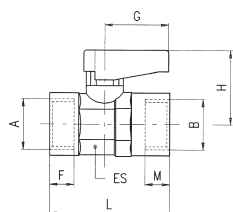
VALVOLA MASCHIO CONICO R ISO 7 - TUBO (MANIGLIA STANDARD - PIASTRINA ROSSA)
TAPER MALE R ISO 7 - TUBE VALVE (STANDARD HANDLE - RED PLATE)



Codice Code	A	D	DN	ES	F	L	G	H	Conf. Pack.
0635000001	1/8	6	5.5	14-15	7.4	40.5	19	21	25
0635000002	1/8	8	5.5	14-15	7.4	41.5	19	21	25
0635000003	1/4	6	5.5	14-15	11	46	19	21	25
0635000004	1/4	8	5.5	14-15	11	45	19	21	25
0635000005	3/8	10	8	18-19	11.4	50.5	19	22	10
0635000006	3/8	12	8	18-19	11.4	51.5	19	22	10
0635000007	1/2	14	10	22-23	15	59.5	26	30.5	10
0635000008	1/2	15	10	22-23	15	59.5	26	30.5	10
0635000109	3/4	16	14	28-30	16.3	67	50	33	5
0635000110	3/4	18	14	28-30	16.3	67	50	33	5

6400

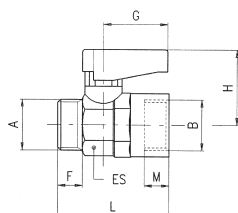
VALVOLA FEMMINA G ISO 228 - FEMMINA G ISO 228 (MANIGLIA STANDARD - PIASTRINA ROSSA)
FEMALE G ISO 228 - FEMALE G ISO 228 VALVE (STANDARD HANDLE - RED PLATE)



Codice Code	A	B	DN	ES	F	M	L	G	H	Conf. Pack.
0640000001	1/8	1/8	5.5	14-15	7	7	35	19	21	25
0640000002	1/4	1/4	5.5	14-15	8	8	37	19	21	25
0640000003	3/8	3/8	8	18-19	9	9	42	19	22	10
0640000004	1/2	1/2	10	22-23	10	10	49	26	30.5	10
0640000055	3/4	3/4	14	28-30	12	12	58	50	33	5

6410

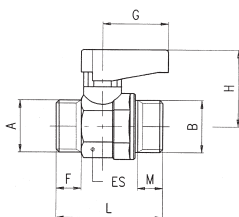
VALVOLA MASCHIO CILINDRICO GA ISO 228 - FEMMINA G ISO 228 (MANIGLIA STANDARD - PIASTRINA ROSSA)
PARALLEL MALE GA ISO 228 - FEMALE G ISO 228 VALVE (STANDARD HANDLE - RED PLATE)



Codice Code	A	B	DN	ES	F	M	L	G	H	Conf. Pack.
0641000001	1/8	1/8	5.5	14-15	7	7	34	19	21	25
0641000002	1/4	1/8	5.5	14-15	8	7	35	19	21	25
0641000003	1/4	1/4	5.5	14-15	8	8	35	19	21	25
0641000004	3/8	3/8	8	18-19	9	9	39	19	22	10
0641000005	1/2	1/2	10	22-23	10	10	45	26	30.5	10
0641000066	3/4	3/4	14	28-30	12	12	52	50	33	5

6420

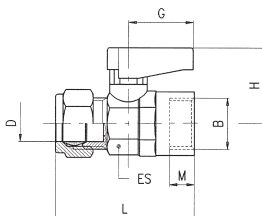
VALVOLA MASCHIO CILINDRICO GA ISO 228 - MASCHIO CILINDRICO GA ISO 228 (MANIGLIA STANDARD - PIASTRINA ROSSA)
PARALLEL MALE GA ISO 228 - PARALLEL MALE GA ISO 228 VALVE (STANDARD HANDLE - RED PLATE)



Codice Code	A	B	DN	ES	F	M	L	G	H	Conf. Pack.
0642000001	1/8	1/8	5.5	14-15	7	7	32	19	21	25
0642000002	1/8	1/4	5.5	14-15	7	8	32	19	21	25
0642000003	1/4	1/4	5.5	14-15	8	8	33	19	21	25
0642000004	3/8	1/4	5.5	14-15	9	8	33	19	21	25
0642000005	3/8	3/8	8	18-19	9	9	37	19	22	10
0642000006	1/2	3/8	8	18-19	10	9	37	19	22	10
0642000007	1/2	1/2	10	22-23	10	10	42	26	30.5	10
0642000008	3/4	1/2	10	22-23	12	10	42	50	30.5	10
0642000099	3/4	3/4	14	28-30	12	12	49	50	33	5

6430

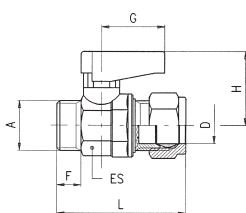
VALVOLA TUBO - FEMMINA G ISO 228 (MANIGLIA STANDARD - PIASTRINA ROSSA)
TUBE - FEMALE G ISO 228 VALVE (STANDARD HANDLE - RED PLATE)



Codice Code	D	B	DN	ES	M	L	G	H	Conf. Pack.
0643000001	6	1/8	5.5	14-15	7	41	19	21	25
0643000002	8	1/8	5.5	14-15	7	43	19	21	25
0643000003	8	1/4	5.5	14-15	8	43	19	21	25
0643000004	10	3/8	8	18-19	9	48	19	22	10
0643000005	12	3/8	8	18-19	9	49	19	22	10
0643000006	14	1/2	10	22-23	10	55.5	26	30.5	10
0643000007	15	1/2	10	22-23	10	55.5	26	30.5	10
0643000098	16	3/4	14	28-30	12	63.5	50	33	5
0643000099	18	3/4	14	28-30	12	63.5	50	33	5

6440

VALVOLA MASCHIO CILINDRICO GA ISO 228 - TUBO (MANIGLIA STANDARD - PIASTRINA ROSSA)
PARALLEL MALE GA ISO 228 - TUBE VALVE (STANDARD HANDLE - RED PLATE)



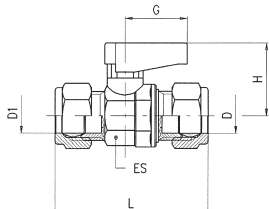
Codice Code	A	D	DN	ES	F	L	G	H	Conf. Pack.
0644000001	1/8	6	5.5	14-15	7	39	19	21	25
0644000002	1/8	8	5.5	14-15	7	40	19	21	25
0644000003	1/4	6	5.5	14-15	8	40	19	21	25
0644000004	1/4	8	5.5	14-15	8	41	19	21	25
0644000005	1/4	10	5.5	14-15	8	44	19	21	25
0644000006	3/8	8	5.5	14-15	9	43	19	21	25
0644000007	3/8	10	8	18-19	9	46	19	22	10
0644000008	3/8	12	8	18-19	9	47	19	22	10
0644000009	3/8	14	8	18-19	9	50.5	19	22	10
0644000010	3/8	15	8	18-19	9	50.5	19	22	10
0644000011	1/2	10	8	18-19	10	49	19	22	10
0644000012	1/2	12	8	18-19	10	50	19	22	10
0644000013	1/2	14	10	22-23	10	52.5	26	30.5	10
0644000014	1/2	15	10	22-23	10	52.5	26	30.5	10
0644000015	3/4	14	10	22-23	12	56.5	26	30.5	10
0644000016	3/4	15	10	22-23	12	56.5	26	30.5	10
0644000197	3/4	16	14	28-30	12	60.5	50	33	5
0644000198	3/4	18	14	28-30	12	60.5	50	33	5

• Nelle misure 1/4-8, 1/4-10, 3/8-14, 3/8-15 il dado, il bicono e il filetto A sono all'opposto della figura.

• In the sizes 1/4-8, 1/4-10, 3/8-14, 3/8-15 the nut, the double cone and the thread A are at the opposite side of the picture.

6450

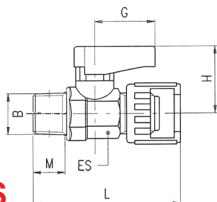
VALVOLA TUBO - TUBO (MANIGLIA STANDARD - PIASTRINA ROSSA)
TUBE - TUBE VALVE (STANDARD HANDLE - RED PLATE)



Codice Code	D1	D	DN	ES	L	G	H	Conf. Pack.
064500001	6	6	5.5	14-15	46	19	21	25
064500002	6	8	5.5	14-15	48	19	21	25
064500003	8	8	5.5	14-15	48	19	21	25
064500004	10	8	5.5	14-15	51	19	21	25
064500005	10	10	8	18-19	55	19	22	10
064500006	10	12	8	18-19	56	19	22	10
064500007	12	12	8	18-19	57	19	22	10
064500008	14	10	8	18-19	59.5	19	22	10
064500009	14	12	8	18-19	60.5	19	22	10
064500010	15	10	8	18-19	59.5	19	22	10
064500011	15	12	8	18-19	60.5	19	22	10
064500012	14	14	10	22-23	63	26	30.5	10
064500013	15	14	10	22-23	63	26	30.5	10
064500014	15	15	10	22-23	63	26	30.5	10
064500015	16	14	10	22-23	68	26	30.5	10
064500016	16	15	10	22-23	68	26	30.5	10
064500017	18	14	10	22-23	68	26	30.5	10
064500018	18	15	10	22-23	68	26	30.5	10
064500019	18	16	14	28-30	71	50	33	5
064500020	18	18	14	28-30	71	50	33	5

6460

VALVOLE DADO CAPETTATO - MASCHIO CONICO R ISO 7 (MANIGLIA STANDARD - PIASTRINA ROSSA)
MILLED NUT - TAPER MALE R ISO 7 VALVE (STANDARD HANDLE - RED PLATE)

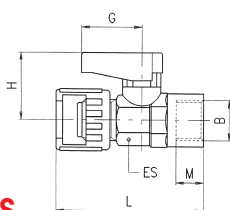


NO GAS

Codice Code	B	DN	ES	M	L	G	H	Conf. Pack.
064600001	1/8	5.5	14-15	7.4	44	19	21	10
064600002	1/4	5.5	14-15	11	49.5	19	21	10
064600003	3/8	8	18-19	11.4	50	19	21	10

6470

VALVOLE DADO CAPETTATO - FEMMINA G ISO 228 (MANIGLIA STANDARD - PIASTRINA ROSSA)
MILLED NUT - FEMALE G ISO 228 VALVE (STANDARD HANDLE - RED PLATE)

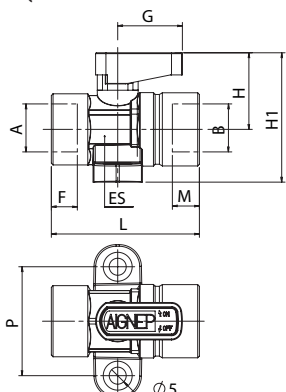


NO GAS

Codice Code	B	DN	ES	M	L	G	H	Conf. Pack.
064700001	1/8	5.5	14-15	7	46	19	21	10
064700002	1/4	5.5	14-15	8	46	19	21	10

6490

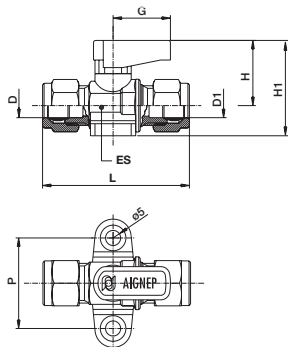
VALVOLA CON PIEDINI D'ANCORAGGIO FEMMINA-FEMMINA (MANIGLIA STANDARD - PIASTRINA ROSSA)
FOOT MOUNTED FEMALE-FEMALE VALVE (STANDARD HANDLE - RED PLATE)



Codice Code	A	B	DN	ES	L	F	M	G	H	H1	P	Conf. Pack.
064900002	1/4	1/4	5.5	14-15	43.5	8	8	19	21	31.5	30	10
064900003	3/8	3/8	8	18-19	8.5	9	9	19	22	38	32	10

6500

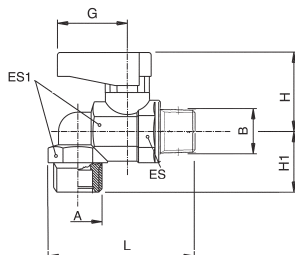
VALVOLA CON PIEDINI D'ANCORAGGIO TUBO-TUBO (MANIGLIA STANDARD - PIASTRINA ROSSA)
 FOOT MOUNTED TUBE-TUBE VALVE (STANDARD HANDLE - RED PLATE)



Codice Code	D	D1	DN	ES	L	H	H1	G	P	Conf. Pack.
065000001	8	8	5.5	14-15	50	21	32	19	30	10

6540

VALVOLA A L MASCHIO CILINDRICO GA ISO 228-MASCHIO CONICO R ISO 7 (MANIGLIA STANDARD - PIASTRINA ROSSA)
 ELBOW PARALLEL MALE GA ISO 228-TAPER MALE R ISO 7 VALVE (STANDARD HANDLE - RED PLATE)



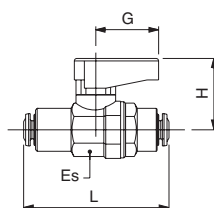
Codice Code	A	B	DN	ES	ES1	L	H	H1	G	Conf. Pack.
065400001	1/4	1/4	5.5	14-15	17	48	21	17	19	10

6560

VALVOLA CON ATTACCHI TUBO AUTOMATICI (MANIGLIA STANDARD - PIASTRINA ROSSA)
 WITH PUSH-IN CONNECTIONS VALVE (STANDARD HANDLE - RED PLATE)



NO GAS



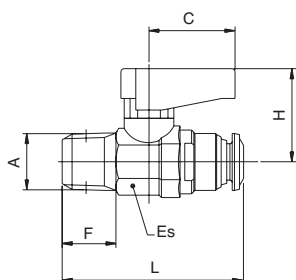
Codice Code	Tubo Tube	Tubo Tube	DN	ES	L	G	H	Conf. Pack.
065600001	4	4	3	14-15	44	19	21	10
065600002	6	6	5	14-15	48	19	21	10
065600003	8	8	5.5	14-15	48	19	21	10
0656000075	10	10	8	18-19	58.5	19	22	10
0656000076	12	12	10	22-23	66	26	30.5	10

6570

VALVOLA MASCHIO CONICO R ISO 7 - ATTACCO TUBO AUTOMATICO (MANIGLIA STANDARD - PIASTRINA ROSSA)
 TAPER MALE R ISO 7- PUSH-FIT CONNECTIONS VALVE (STANDARD HANDLE - RED PLATE)



NO GAS



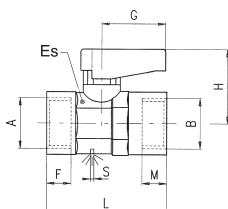
Codice Code	A	Tubo Tube	DN	F	Es	L	C	H	Conf. Pack.
065700001	1/8	4	3	8.5	14-15	35	19	21	10
065700002	1/8	6	5	8.5	14-15	40	19	21	10
065700004	1/8	8	5.5	8.5	14-15	41.5	19	21	10
065700003	1/4	6	5	12.5	14-15	38.5	19	21	10
065700005	1/4	8	5.5	12.5	14-15	45.5	19	22	10

6600

VALVOLA CON FORO DI SFIATO FEMMINA G ISO 228 (MANIGLIA STANDARD - PIASTRINA ROSSA)
 EXHAUST HOLE FEMALE G ISO 228 - FEMALE G ISO 228 VALVE (STANDARD HANDLE - RED PLATE)



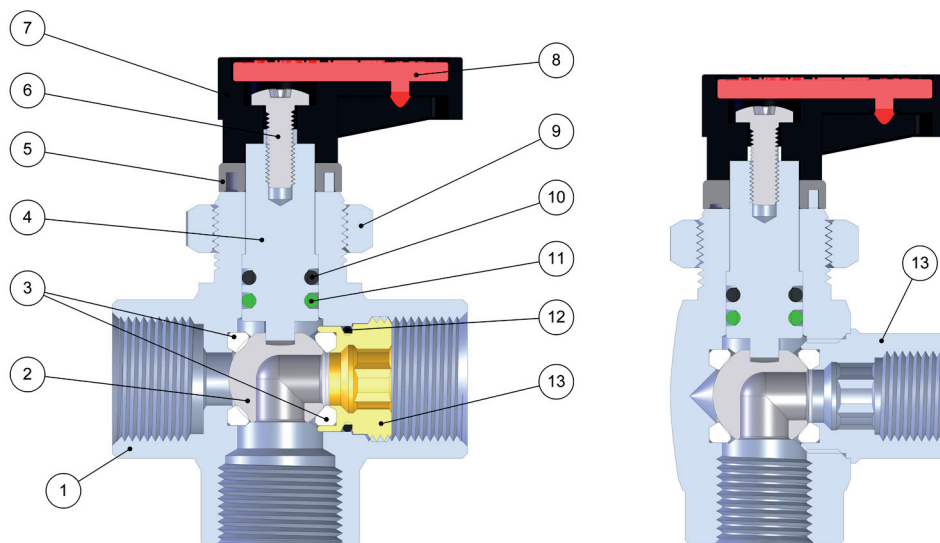
NO GAS



Codice Code	A	B	DN	ES	F	M	L	G	H	S	Conf. Pack.
066000001	1/8	1/8	5.5	14-15	7	7	35	19	21	2.5	10
066000002	1/4	1/4	5.5	14-15	8	8	37	19	21	2.5	10
066000003	3/8	3/8	8	18-19	9	9	42	19	22	3	10

MiniValvola a sfera a tre vie / 3 Ways MiniBall Valve

Caratteristiche Tecniche / Technical Characteristics



FKM A RICHIESTA
IF REQUESTED FKM

Materiali e Componenti / Component Parts and Materials

- | | | | |
|----|------------------------------------|----|------------------------------------|
| 1 | Corpo in Ottone cromato | 1 | Chrome Nickel-plated Brass Body |
| 2 | Sfera in Ottone cromato | 2 | Chrome Nickel-plated Brass Ball |
| 3 | Guarnizione sede sfera in PTFE | 3 | PTFE Seat |
| 4 | Albero in Ottone cromato | 4 | Chrome Nickel-plated Brass Spindle |
| 5 | Fermo Maniglia | 5 | Stop Handle |
| 6 | Vite in acciaio | 6 | Steel Screw |
| 7 | Maniglietta in PA66 Caricato vetro | 7 | PA66 Glass reinforced Handle |
| 8 | Piastrina in Resina Acetalica | 8 | Acetalic resin Plate |
| 9 | Ghiera per passaparete | 9 | Bulkhead nut |
| 10 | Guarnizione O-RING in NBR 70 | 10 | NBR 70 Seal O-RING |
| 11 | Guarnizione O-RING in FKM | 11 | FKM Seal O-RING |
| 12 | Guarnizione O-RING in NBR 70 | 12 | NBR 70 Seal O-RING |
| 13 | Ghiera o raccordo in Ottone | 13 | Brass Fitting |

Pressioni / Pressures

Pressione minima / Minimum Pressure: -0.99 bar (-0.099MPa)
Pressione massima / Maximum pressure: 20 bar (2 MPa)

Filettature / Threads

Gas conica conforme ISO 7.1, BS 21, DIN 2999
Tapered gas in conformity with ISO 7.1, BS 21, DIN 2999.
Gas cilindrica conforme ISO 228 Classe A
Parallel gas in conformity with ISO 228 Class A.

Tubi di collegamento / Connection Tubes

Tubi in rame, tubi metallici in genere, raccorderia varia.
PA6, PA11, FEP, PTFE. utilizzando l'apposita bussolina di rinforzo art. 10770.

Tubes made in copper, metal in general and various fittings.
PA6, PA11, FEP, PTFE. with an inside support bush art 10770.

Temperature / Temperatures

Temperatura minima / Minimum temperature: -20 °C
Temperatura massima / Maximum temperature: +80 °C

Con Guarnizioni FKM / With FKM Seals

Temperatura minima / Minimum temperature: -15 °C
Temperatura massima / Maximum temperature: +130 °C

Fluidi compatibili / Fluids

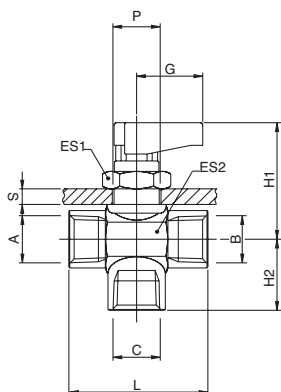
Aria compressa, acqua, oli.
Compressed air, water, oils.

6700

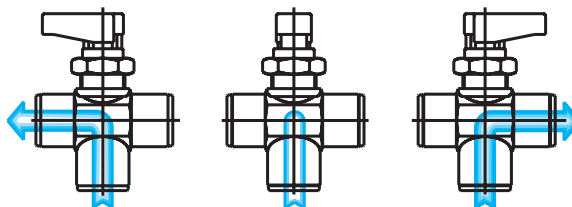
VALVOLA A TRE VIE FEMMINA G ISO 228 (MANIGLIA STANDARD - PIASTRINA ROSSA)
 3 WAYS FEMALE G ISO 228 VALVE (STANDARD HANDLE - RED PLATE)



NO GAS



Codice Code	A	B	C	DN	ES1	ES2	L	G	H1	H2	SMax	P	Conf. Pack.
067000001	1/8-1/8-1/8			5	17	17	35	19	33.5	15.5	4.5	14.5	25
067000002	1/4-1/4-1/4			5	17	17	37	19	33.5	17.5	4.5	14.5	25
067000003	3/8-3/8-3/8			7	17	21	42	19	35	19.5	4.5	14.5	10

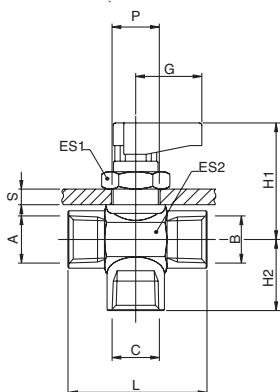


6710

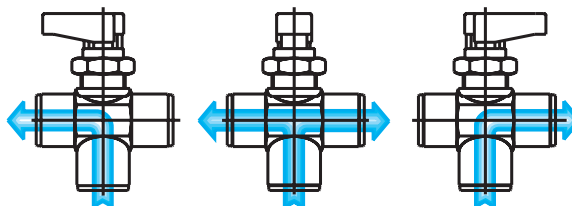
VALVOLA A TRE VIE FEMMINA G ISO 228 (MANIGLIA STANDARD - PIASTRINA ROSSA)
 3 WAYS FEMALE G ISO 228 VALVE (STANDARD HANDLE - RED PLATE)



NO GAS



Codice Code	A	B	C	DN	ES1	ES2	L	G	H1	H2	SMax	P	Conf. Pack.
067100001	1/8-1/8-1/8			5	17	17	35	19	33.5	15.5	4.5	14.5	25
067100002	1/4-1/4-1/4			5	17	17	37	19	33.5	17.5	4.5	14.5	25
067100003	3/8-3/8-3/8			7	17	21	42	19	35	19.5	4.5	14.5	10

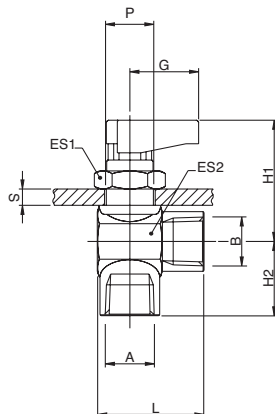


6720

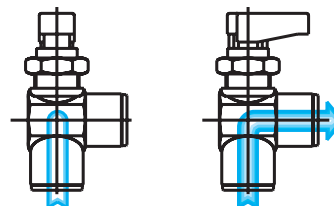
VALVOLA A "L" FEMMINA G ISO 228 (MANIGLIA STANDARD - PIASTRINA ROSSA)
 "L" VALVE FEMALE G ISO 228 VALVE (STANDARD HANDLE - RED PLATE)



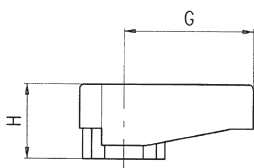
NO GAS



Codice Code	A	B	DN	ES1	ES2	L	G	H1	H2	SMax	P	Conf. Pack.
067200001	1/8-1/8		5	17	17	28.5	19	33.5	15.5	4.5	14.5	25
067200002	1/4-1/4		5	17	17	28.5	19	33.5	17.5	4.5	14.5	25
067200003	3/8-3/8		7	17	21	31	19	35	19.5	4.5	14.5	10



6900

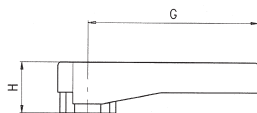
MANIGLIA CORTA - SHORT HANDLE


Codice Code	Modello Type	G	H	Conf. Pack.
06900A0300000	A	19	11	25
06900B0300000	B	26	15	25

A = Per valvole da 1/8, 1/4, 3/8. **B = Per valvole da 1/2, 3/4.**
A = For valves of 1/8, 1/4, 3/8. *B = For valves of 1/2, 3/4.*

Maniglia CORTA STANDARD per valvola da 1/8-1/4-3/8-1/2
STANDARD SHORT Handle for Valve 1/8-1/4-3/8-1/2

6910

MANIGLIA LUNGA - LONG HANDLE


Codice Code	Modello Type	G	H	Conf. Pack.
06910A0300000	A	35	11	25
06910B0300000	B	50	15	25

A = Per valvole da 1/8, 1/4, 3/8. **B = Per valvole da 1/2, 3/4.**
A = For valves of 1/8, 1/4, 3/8. *B = For valves of 1/2, 3/4.*

Maniglia LUNGA STANDARD per Valvola da 3/4
STANDARD LONG Handle for Valve 3/4

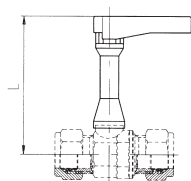
Prolunga albero di comando / Spindle Extension

Tutti i modelli di valvola a sfera di questa serie possono essere forniti con asta di manovra prolungata (vedi figura). Per l'ordinazione vedi le istruzioni nella pagina "COME ORDINARE" posta all'inizio della serie.

All the valves "GHILUX" can be supplied with a spindle extension (see the picture). To order use the same instructions mentioned in the previous page "HOW TO ORDER".



6915

PROLUNGA ALBERO DI COMANDO (CON MANIGLIA LUNGA, VITE)
SPINDLE EXTENSION (WITH LONG HANDLE, SCREW)


Codice Code	Modello Type	Misura valvola Valve size	L	Conf. Pack.
0691500001	A	1/8	58	10
		1/4	58	
		3/8	59	
0691500002	B	1/2	68	10
		3/4	70	

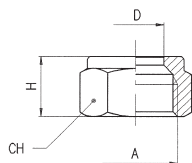
6920

PIASTRINA COLORATA
COLOURED PLATE


Codice Code	Modello Type	Colori Colors	Conf. Pack.
06920A03000RO	A	ROSSO / RED	100
06920B03000RO	B	ROSSO / RED	100
06920A03000GI	A	GIALLO / YELLOW	100
06920B03000GI	B	GIALLO / YELLOW	100
06920A03000BL	A	BLU / BLUE	100
06920B03000BL	B	BLU / BLUE	100
06920A03000VE	A	VERDE / GREEN	100
06920B03000VE	B	VERDE / GREEN	100
06920A03000BN	A	BIANCO / WHITE	100
06920B03000BN	B	BIANCO / WHITE	100

6680

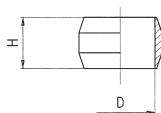
DADO - NUT



Codice Code	D	A	H	CH	Conf. Pack.
066800001BSCT	6	1/8	11	12	100
066800001BJCT	8	1/4	12	15	100
066800001CGCT	10	3/8	13	19	100
066800001CLCT	12	3/8	14	19	100
066800001DBCT	14	1/2	15	24	100
066800001CPCT	15	1/2	15	24	100
066800001CSCT	16	3/4	17	30	100
066800001CXCT	18	3/4	17	30	100

10740

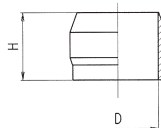
OGIVA OTTONE - BRASS OLIVE



Codice Code	D	H	Conf. Pack.
107400002X400	6	6.5	50
107400002X700	8	6.5	50
107400002X900	10	7.5	50
107400002Y100	12	8	50
107400002Y400	15	9	25
107400002Y700	18	10	25

10741

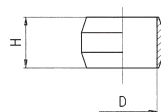
OGIVA OTTONE - BRASS OLIVE



Codice Code	D	H	Conf. Pack.
107410001Y300	14	12	50
107410001Y500	16	13.5	50

10760

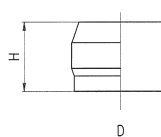
OGIVA PTFE - PTFE OLIVE



Codice Code	D	H	Conf. Pack.
107600028X400	6	6.5	50
107600028X700	8	6.5	50
107600028X900	10	7.5	50
107600028Y100	12	8	50
107600028Y400	15	9	50
107600028Y700	18	10	50

10761

OGIVA PTFE - PTFE OLIVE

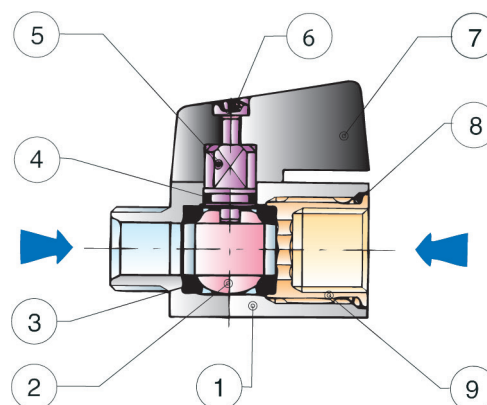


Codice Code	D	H	Conf. Pack.
107610028Y300	14	12	50
107610028Y500	16	13.5	50

Mini Valvole a Sfera / Mini Ball Valves

Le mini valvole a sfera Art. 6065 e Art. 6066 sono valvole di intercettazione del tipo ON-OFF. L'apertura e la chiusura della valvola avvengono manualmente agendo sull'alberino di comando della sfera con l'apposita maniglietta o mediante una chiave.

The mini ball valves Art. 6065 and Art. 6066 are shutoff valves type ON-OFF. The opening and closing functions are made by hand, acting on the control spindle of the ball with the handle, or operated with a spanner.



Materiali e Componenti / Component Parts and Materials

- 1 Corpo in Ottone nichelato
- 2 Sfera in Ottone nichelato
- 3 Guarnizione sede sfera in PTFE
- 4 Guarnizione O-RING in NBR 70
- 5 Albero in Ottone nichelato
- 6 Vite in acciaio
- 7 Maniglietta in PA66 Caricato vetro
- 8 Guarnizione O-RING in NBR 70
- 9 Ghiera o raccordo in Ottone nichelato

- 1 Nickel-plated Brass Body
- 2 Nickel-plated Brass Ball
- 3 PTFE Seats
- 4 NBR 70 Seal O-RING
- 5 Nickel-plated Brass Spindle
- 6 Steel Screw
- 7 PA66 Glass reinforced Handle
- 8 NBR 70 Seal O-RING
- 9 Nickel-plated Brass Fitting

Pressioni / Pressures

Pressione minima / Minimum Pressure: -0.99 bar (-0.099MPa)
 Pressione massima / Maximum pressure: 10 bar (1 MPa)

Filettature / Threads

Gas cilindrica conforme ISO 228 Classe A
 Parallel gas in conformity with ISO 228 Class A.

Tubi di collegamento / Connection Tubes

Tubi metallici in genere, raccorderia varia.

Tubes made in metal in general and various fittings.

Temperature / Temperatures

Temperatura minima / Minimum temperature: -15 °C
 Temperatura massima / Maximum temperature: +110 °C

Con Acqua / With Water

Temperatura minima / Minimum temperature: 0 °C
 Temperatura massima / Maximum temperature: +90 °C

Fluidi compatibili / Fluids

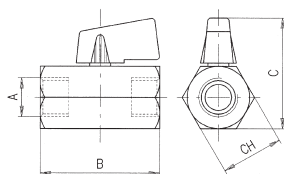
Aria compressa, acqua, vari, oli, ecc.
 Vuoto.
 Compressed air, water, various types of oils, etc.
 Vacuum.

6065

VALVOLA A SFERA MINI FEMMINA G ISO 228 - FEMMINA G ISO 228 - MINI BALL VALVE FEMALE G ISO 228 - FEMALE G ISO 228



NO GAS



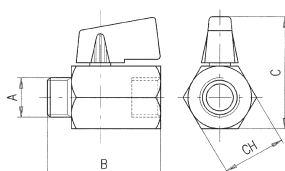
Codice Code	A	DN	B	C	CH	Conf. Pack.
0606500001	1/8	6	39	38	21	10
0606500002	1/4	8	40	38	21	10
0606500003	3/8	8	42	38	21	10
0606500004	1/2	10	48	42	25	10
0606500005	3/4	12	54	47	30	10

6066

VALVOLA A SFERA MINI MASCHIO G ISO 228 - FEMMINA G ISO 228 - MINI BALL VALVE MALE GA ISO 228 - FEMALE G ISO 228



NO GAS

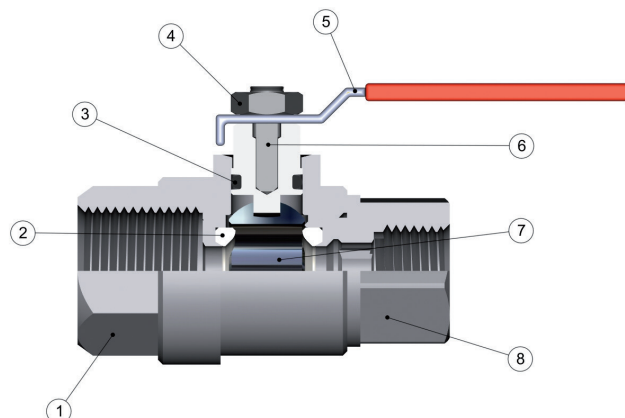


Codice Code	A	DN	B	C	CH	Conf. Pack.
0606600001	1/8	6	39	38	21	10
0606600002	1/4	8	39	38	21	10
0606600003	3/8	8	40	38	21	10
0606600004	1/2	10	46	42	25	10
0606600005	3/4	12	51	47	30	10

Valvole a Sfera / Ball Valves

Le valvole a sfera a passaggio totale sono valvole di intercettazione del tipo ON-OFF, adatte a grandi portate. L'apertura e la chiusura avvengono manualmente agendo sull'alberino di comando della sfera con l'apposita maniglia o mediante una chiave.

The ball valves full port are shutoff valves type ON-OFF, suitable for high flow rate. The opening and closing functions are made by hand, acting on the control spindle of the ball with the handle, or operated with a spanner.



Materiali e Componenti / Component Parts and Materials

- 1 Raccordo in Ottone Nichelato
- 2 Guarnizione sede sfera in PTFE
- 3 Guarnizione asta in NBR
- 4 Dado per leva in Acciaio
- 5 Leva di manovra in acciaio plastificato
- 6 Asta di manovra in ottone nichelato
- 7 Sfera in ottone cromato
- 8 Corpo in ottone nichelato

- 1 Nickel-plated Brass Fitting
- 2 PTFE Seats
- 3 NBR Stem Seal
- 4 Steel Nut for lever
- 5 Steel plastified Lever handle
- 6 Nickel-plated Brass Stem
- 7 Chrome Nickel-plated Brass Ball
- 8 Nickel-plated Brass Body

Filettature / Threads

Art. 6067 / 6069

Gas Cilindrica conforme ISO 228 classe A.
Parallel gas in conformity with ISO 228 class A.

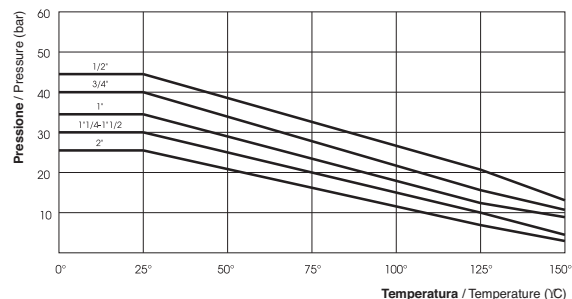
Art. 6068

Gas RP ISO7
Gas RP ISO7

Tubi di collegamento / Connection Tubes

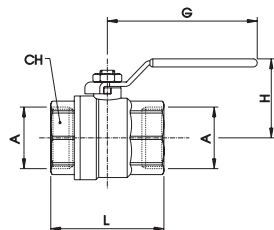
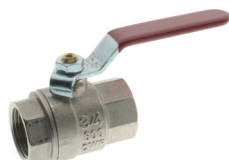
Tubi metallici in genere, raccorderia varia.
Tubes made in metal in general and various fittings.

**DIAGRAMMA PRESSIONE-TEMPERATURA PRESSURE-TEMPERATURE RATINGS DIAGRAM



6067

VALVOLA A SFERA, FEMMINA G ISO 228 - FEMMINA G ISO 228 - BALL VALVE, FEMALE G ISO 228 - FEMALE G ISO 228



Codice Code	A	DN	CH	L	G	H	Conf. Pack.
0606700001	1/2	15	25	46	88	47.5	10
0606700002	3/4	20	31	56.5	88	51	10
0606700003	1"	25	38	65.5	105	63	5
0606700004	1 1/4	32	48	77	105	68.5	2
0606700005	1 1/2	40	54	88.5	134	84.5	1
0606700006	2"	50	67	101.5	134	92.5	1

ART.6067:

Fluidi: Aria compressa, acqua, olii.

Fino al DN20: Valgono le condizioni riportate nel diagramma**

Dal DN25 al DN50, Pressione Max: 18 bar

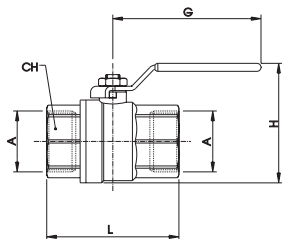
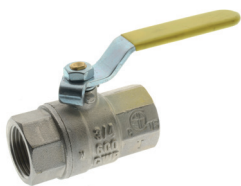
Fluid: Compressed air, water, oil.

DN 15 and 20: Use Diagram condition**

From DN25 to DN50, Max Pressure: 18 bar

6068

VALVOLA A SFERA PER GAS, FEMMINA RP ISO7 - FEMMINA RP ISO7 - GAS BALL VALVE, FEMALE RP ISO7 - FEMALE RP ISO7



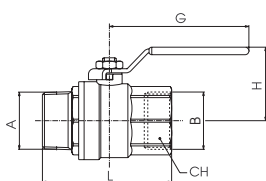
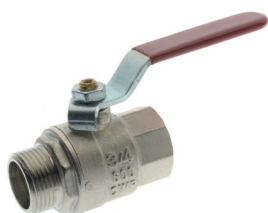
Codice Code	A	DN	CH	L	G	H	Conf. Pack.
0606800007	1/4	10	22	46	88	50	10
0606800008	3/8	12	22	46	88	50	10
0606800001	1/2	15	26	59	88	58	10
0606800002	3/4	20	32	67.3	88	65	10
0606800003	1"	25	40	77.5	105	74	5
0606800004	1"1/4	32	49	92	105	85	2
0606800005	1"1/2	40	55	101.5	134	100	1
0606800006	2"	50	68	122.5	134	116.5	1

ART.6068:

 Dal DN15 al DN50: Fluidi: 1° e 2° Famiglia di gas a media pressione e 3° famiglia di gas a bassa pressione. OMOLOGATE EN 331 fino a pressione Max: 5 bar
 From DN 15 to 50: Fluids: 1st and 2nd gas family to medium pressure and 3th gas family to low pressure OMOLOGATED EN331 to Max pressure: 5bar

6069

VALVOLA A SFERA MASCHIO G ISO 228 - FEMMINA G ISO 228 - BALL VALVE MALE GA ISO 228 - FEMALE G ISO 228



Codice Code	A	B	DN	CH	L	G	H	Conf. Pack.
0606900001	1/2	1/2	15	25	56	88	47.5	10
0606900002	3/4	3/4	20	31	63.5	88	51	10
0606900003	1"	1"	25	38	74	105	63	5
0606900004	1"1/4	1"1/4	32	48	85	105	68.5	2
0606900005	1"1/2	1"1/2	40	54	100	134	84.5	1
0606900006	2"	2"	50	67	121.5	134	92.5	1

ART.6069:

Fluidi: Aria compressa, acqua, olii.

Fino al DN20: Valgono le condizioni riportate nel diagramma Pag. 10.16** - Dal DN25 al DN50, Pressione Max: 18 bar

Fluid: Compressed air, water, oil.

DN 15 and 20: Use Diagram condition Pag. 10.16** - From DN25 to DN50, Max Pressure: 18 bar

Filtro a "Y" / "Y" Filter

Materiali e Componenti / Component Parts and Materials

Corpo in ottone dal 1/4 al 2"
 Corpo in bronzo dal 2"1/2 al 4"
 Tappo in ottone
 Filtro in acciaio AISI 304
 Guarnizione corpo in NBR

Brass body from 1/4 to 2"
 Bronze body from 2"1/2 to 4"
 Brass Cap
 Steel AISI 304 Strainer
 NBR Body Seal

Pressioni / Pressures

Pressioni alle temperature di riferimento :

Pressures to reference temperature:

18 BAR 80°C
 16 BAR 100°C
 10 BAR 120°C

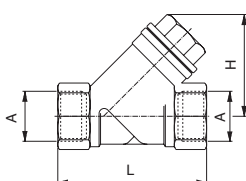
Fluidi compatibili / Fluids

Acqua, Olii.

Water, Oil.

6035

FILTRO "Y" PN 20 - "Y" FILTER PN 20



Codice Code	A	DN	L	H	Conf. Pack.
0603500001	1/4	8	55	40	10
0603500002	3/8	10	55	40	10
0603500003	1/2	15	58	40	10
0603500004	3/4	20	70	50	10
0603500005	1"	25	87	56	5
0603500006	1"1/4	32	96	64	2
0603500007	1"1/2	40	106	73	2
0603500008	2"	50	126	89	1
0603500009	2"1/2"	65	150	107	1
0603500010	3"	80	170	120	1
0603500011	4"	100	219	161	1

Grado di filtrazione / Filtration degree

Da 1/4 a 2" 500 µm; 2"1/2, 3" e 4" 800 µm.

From 1/4 to 2" 500 µm; 2"1/2, 3" e 4" 800 µm.

Temperatura di esercizio

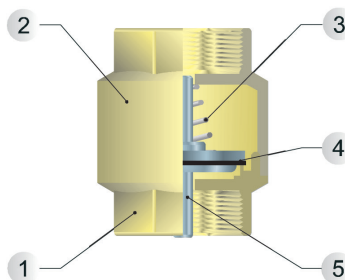
Working temperature

Da -20°C a +110°C in assenza di vapore.

From -20°C to +110°C without steam.

Valvole di Ritegno / No return Valve

Caratteristiche Tecniche / Technical Characteristics



Materiali e Componenti / Component Parts and Materials

- | | |
|-------------------------------|--------------------------|
| 1 Corpo in Ottone | 1 Brass Body |
| 2 Coperchio in Ottone | 2 Brass Cover Cap |
| 3 Molla in acciaio inox | 3 Stainless steel Spring |
| 4 Guarnizione in NBR 65 SH/PS | 4 NBR 65 SH/PS Seal |
| 5 Otturatore in plastica | 5 Plastic Shutter |

Pressioni / Pressures

Pressione minima / Minimum Pressure: 0.99 bar (0.099MPa)
 Pressione massima / Maximum pressure: 15 bar (1.5 MPa)

Temperature / Temperatures

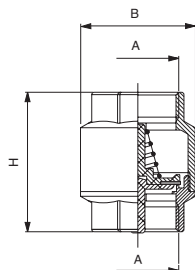
Temperatura minima / Minimum temperature: 0 °C
 Temperatura massima / Maximum temperature: +90 °C

Fluidi compatibili / Fluids

Acqua, Aria compressa, Oli.
 Water, Compressed Air, Oil.

6036

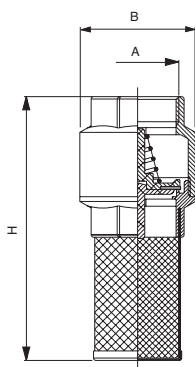
VALVOLA DI RITEGNO - NON RETURN VALVE



Codice Code	A	H	B	Conf. Pack.
060360007	3/8	49	34	10
060360001	1/2	49	34	10
060360002	3/4	54	42	5
060360003	1"	59	48	5
060360004	1"1/4	67	60	2
060360005	1"1/2	72	69	2
060360006	2"	77	85	1

6037

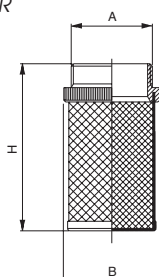
VALVOLA DI FONDO - FINAL VALVE



Codice Code	A	H	B	Conf. Pack.
060370001	1/2	91	34.5	10
060370002	3/4	100.5	42.5	5
060370003	1"	105	47.5	5
060370004	1"1/4	125	60	4
060370005	1"1/2	140	69	2
060370006	2"	160	85	1

6038

FILTRO IN RETE STIRATA - STRETCHED NET-FILTER



Codice Code	A	B	H	Conf. Pack.
060380002	1/2	26	50	10
060380003	3/4	32	57	5
060380004	1"	41	56.5	5
060380005	1"1/4	49	69.5	5
060380006	1"1/2	55	79	5
060380007	2"	68	95	1

Subject to Change