





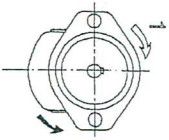
IMPLANTATION of PORTS  
IMPLANTATION des ORIFICES

LOCHBILD der FLANSCHANSCHLÜSSE

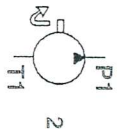
F.T.R 0084



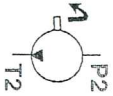
subject to modifications  
Cotes dimensionnelles et caractéristiques approximatives  
sous réserve de modifications  
Änderungen inbezug auf Ausmasse und approximative  
Kennwerte vorbehalten



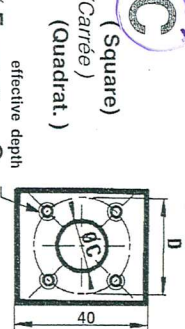
Direction of rotation 1  
Sens Drehrichtung 1



Direction of rotation 2  
Sens Drehrichtung 2



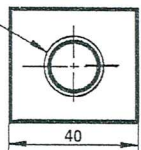
IMPLANTATION  
IMPLANTATION  
ANSCHLUSSGEWINDE



**C** (Square)  
(Carrière)  
(Quadrat.)

effective depth  
prof. utile  
Nutztiefe

**F** (Threaded)  
(Taraudée)  
(Bohrung)



effective depth  
prof. utile  
Nutztiefe

Capacity  
Capacité  
Förder -  
volumen

INLET  
ASPIRATION (T)  
SAUGSEITE

OUTLET  
REFOULEMENT(P)  
DRUCKSEITE

| Capacity<br>Capacité<br>Förder -<br>volumen | INLET<br>ASPIRATION (T)<br>SAUGSEITE |    |   |                         |    |    | OUTLET<br>REFOULEMENT(P)<br>DRUCKSEITE |   |                         |    |  |  |
|---|--------------------------------------|----|---|-------------------------|----|----|--|---|-------------------------|----|--|--|
|   | ØC                                   | D  | E | ØF                      | G  | ØC | D                                      | E | ØF                      | G  |  |  |
| 1001<br>to - à - bis<br>1003                | 14                                   | 30 |   | M 6                     | 13 | 14 | 30                                     |   | M 6                     | 13 |  |  |
| 1004<br>to - à - bis<br>1006                | 14                                   | 30 |   | M 6                     | 13 | 14 | 30                                     |   | M 6                     | 13 |  |  |
| 1001<br>to - à - bis<br>1003                |                                      |    |   | 3/8"<br>BSP<br>Gaz<br>R | 12 |    |  |   | 3/8"<br>BSP<br>Gaz<br>R | 12 |  |  |
| 1004<br>to - à - bis<br>1006                |                                      |    |   | 1/2"<br>BSP<br>Gaz<br>R | 14 |    |  |   | 3/8"<br>BSP<br>Gaz<br>R | 12 |  |  |
| 1004<br>to - à - bis<br>1006                |                                      |    |   | 1/2"<br>BSP<br>Gaz<br>R | 14 | 14 | 30                                     |   | M 6                     | 13 |  |  |

For pumps at more than 4000 RPM  
Pour pompes tournant à plus de 4000 tr/min  
Für Pumpen mit mehr als 4000 U/min

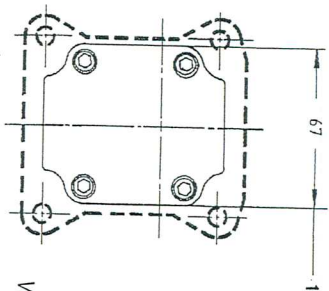
**MULTIPLE GEARED PUMPS**  
**POMPES MULTICORPS**  
**MEHRFACH - ZAHNRADPUMPEN Beispiel**

**Example**

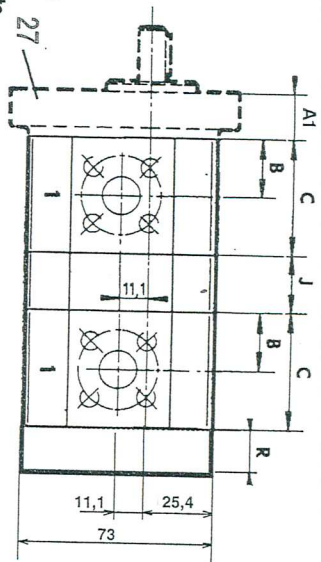
**Version**  
 Version "COMPACT"  
**Version**



Dimension readings and approximate characteristics  
 subject to modifications  
 Cotes dimensionnelles et caractéristiques approximatives  
 sous réserve de modifications  
 Änderungen inbezug auf Ausmasse und approximative  
 Kennwerte vorbehalten



See Page  
 Voir Page  
 Siehe Seite



|                                     |   |                |                              |
|-------------------------------------|---|----------------|------------------------------|
| ASSEMBLING<br>INTERFACE<br>MODULE   | 3 | MODULE<br>(2g) | COMPACT<br>3 (2g)<br>COMPACT |
| ASSEMBLAGE<br>INTERFACE<br>MODULE   | 3 | MODULE<br>(2g) | COMPACTG<br>(2g)<br>COMPACT  |
| KOMPAKT<br>ANSCHLUSSPLATE<br>MODULE | 3 | MODULE<br>(2g) | MONTAGE<br>3 (2g)<br>KOMPAKT |


Possibilities : See Table N.  
 Possibilités : Voir Tableau N°  
 Möglichkeiten : Siehe Tabelle N.

See Page  
 Voir Page  
 Siehe Seite

|        |   |   |
|--------|---|---|
| Code A | Common suction ports<br><i>Aspirations communes</i><br>Gemeinsame Saugseiten  |  |
| Code D | Independent suction sides<br><i>(Internal communication)</i><br><i>Aspirations indépendantes</i><br><i>(communication interne)</i><br>Unabhängige Saugseiten<br><i>(Interne Verbindung)</i> |  |

 not manufactured  
 non réalisé  
 nicht hergestellt

| Series<br>Séries<br>Reihen | Type<br>Typ   |              | B    | C  | R  | A1 |
|----------------------------|---------------|--------------|------|----|----|----|
|                            | ...           | to/à/bis ... |      |    |    |    |
| 1                          | 1001 ... 1003 | 179          | 35.8 | 18 | 18 |    |
|                            | 1004 ... 1006 | 22.7         | 45.6 |    |    |    |
| 0                          |               |              |      |    |    |    |

|  |    |   |
|--|----|---|
| Secondary Pump, Pompe<br>Secondaire Zweite Pumpe | J  |   |
| Code   | 1  | 0   |
| Code   | A  | D   |
| Code   | E  | A   |
| Code   | D  | E   |
| Pump<br>1 <sup>re</sup> Pompe<br>Pumpe           | J  | 1   |
| Code   | 23 |  |

F.T10992 7/7

**HYDRAULIC GEAR PUMPS**  
**POMPES HYDRAULIQUES A ENGRENAGE**  
**HYDRAULIK ZAHNRADPUMPEN**

**SERIE**  
**SERIE**  
**REIHE**

**1**

PUBLISHING  
 EDITION  
 AUSGABE

14 / 11 / 94

10 | 030 | 00