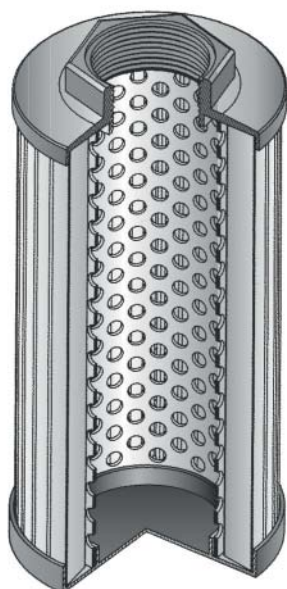
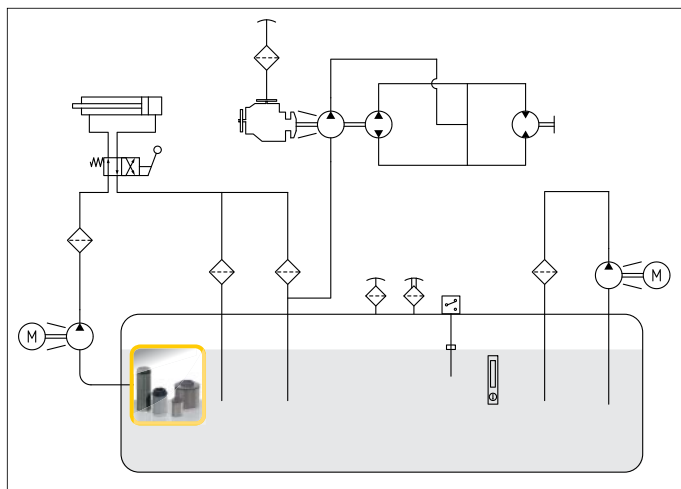
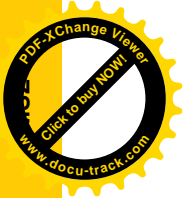


MSZ



SUCTION STRAINER





MSZ

Port sizes: 1/2" ÷ 3"
Flow rates: 15 ÷ 550 l/min

TECHNICAL DATA

Bypass valve: 30 kPa (0,3 bar) ± 10% on request
Filter element collapse pressure:
standard: Δp 100 kPa (1 bar)

Working temperature: -25 ÷ +90°C

MATERIALS

Connector: polyamide
Internal core: zinc plated steel
End cap: zinc plated steel

COMPATIBILITY (ISO 2943:1999)

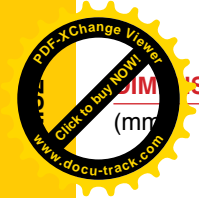
Full with fluids: HH-HL-HM-HV-HTG
(according to ISO 6743/4).

For fluids different than the above mentioned,
please contact our Sales Department.

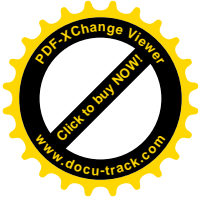
All tests performed according
to the following standards:

- ISO 2941: Element collapse resistance test
- ISO 2942: Production integrity test
- ISO 2943: Fluids compatibility
- ISO 3723: End load test method
- ISO 3724: Flow fatigue resistance method
- ISO 3968: Pressure drop versus flow rate
- ISO 16889: Multipass test.

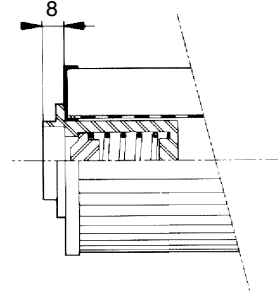
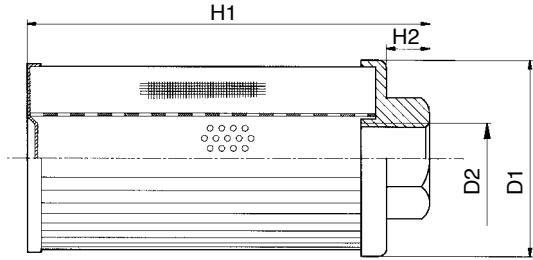
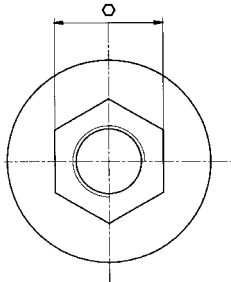
For further information contact our Technical Dept.



SECTIONAL LAYOUT



Suction Filters



Type	D1	D2	H1	H2	O	Weight Kg	Filter area (cm ²)
MSZ 101...	46	1/2"	105,5	14	30	0,12	155
MSZ 201...	64	3/4"	109,5	14	36	0,22	335
MSZ 202...	64	1"	139,5	15	46	0,27	450
MSZ 301...	86	1" 1/2	140	18	60	0,45	610
MSZ 302...	86	1" 1/2	200	18	60	0,53	920
MSZ 303...	86	2"	260	18	70	0,56	1190
MSZ 401...	150	2"	150	18	70	1,20	2030
MSZ 402...	150	2" 1/2	212	20	90	1,40	2900
MSZ 403...	150	3"	272	20	100	1,60	3900

FLOW RATES

(l/min)

$\Delta p = 2 \text{ kPa (0,02 bar)}$

Type	MSZ 101	MSZ 201	MSZ 202	MSZ 301	MSZ 302	MSZ 303	MSZ 401	MSZ 402	MSZ 403
MN μ 90	15	25	50	95	130	180	225	350	500
DC μ 250	20	32	63	115	142	190	248	372	550

The reference fluid has a kinematic viscosity of 30 cSt and a density of 0,86 Kg/dm³.
For different oil viscosity please contact our Sales Department for further information.