

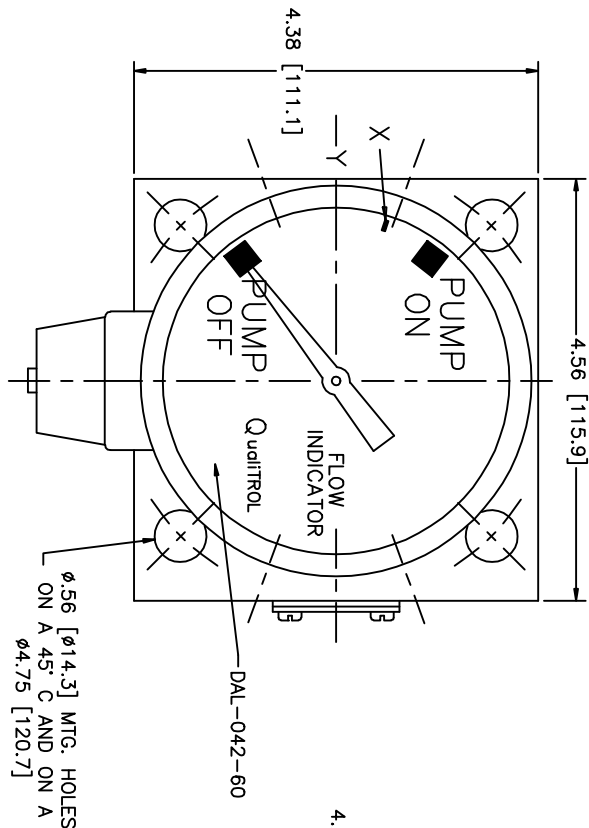


NOTICE:
THIS DRAWING IS THE PROPERTY OF QUALITROL COMPANY LLC AND IS LOANED ONLY ON THE CONDITION THAT IT WILL BE USED TO FACILITATE THE PURPOSES FOR WHICH INTENDED AND NOT BE REPRODUCED, COPIED OR OTHERWISE DISSEMINATED AND IS NOT TO BE USED IN WHOLE OR IN PART FOR ANY OTHER PROJECT WITHOUT THE WRITTEN CONSENT OF QUALITROL COMPANY LLC. APPROVALS OR PARTS THEREOF, EXCEPT BY WRITTEN ORDER FROM QUALITROL COMPANY LLC.

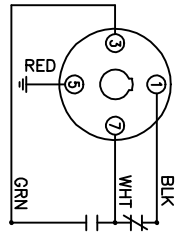
NOTES:
ALL DIMENSIONS ARE IN INCHES [MILLIMETERS], FOR REFERENCE ONLY.
CASE IS INTENDED FOR VERTICAL MOUNTING ONLY.
CASE ASSEMBLY IS SEALED AND CONFORMS TO THE REQUIREMENTS OF IP65.
DIAL: BLACK BACKGROUND
POINTER: YELLOW
LENS: GLASS
CASE: ALUMINIUM, PAINTED ASA 70, LIGHT GRAY EPOXY
TORQUE IS ADJUSTABLE BETWEEN 1-5 IN OZ.

INSULATION TEST: 2000 VOLTS TO GROUND FOR 60 SECONDS

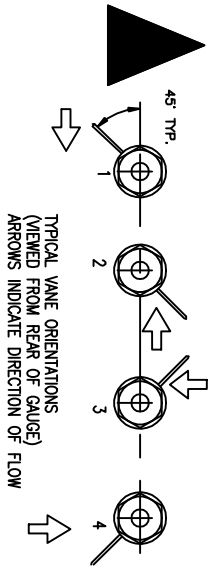
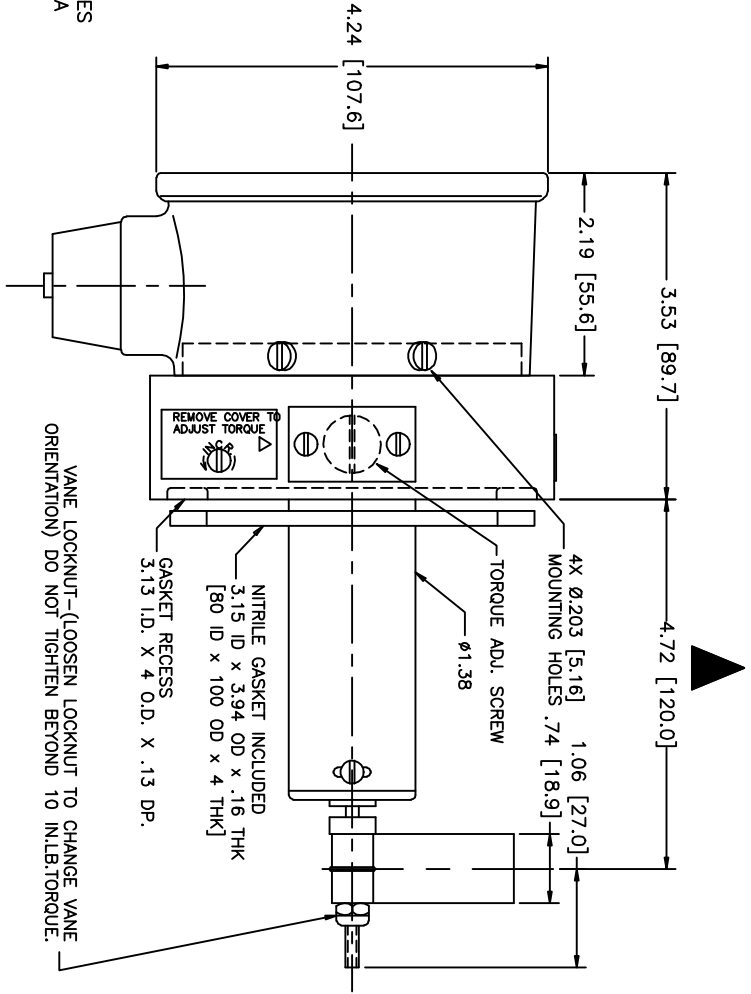
MODEL NO. 092-051-01 CS-41486



WIRING DIAGRAM
(SHOWN AT "PUMP OFF")



BLACK AND WHITE ARE CLOSED AT "PUMP OFF",
OPENING ON INCREASING FLOW AT "X",
ON DECREASING FLOW WHITE RECLOSES ON
BLACK BEFORE "Y"



SWITCH RATING:
10 AMPS AT 125, 250, 480 VAC
1/2 AMP AT 125 VDC - NON INDUCTIVE
1/4 AMP AT 250 VDC - NON INDUCTIVE

****REFER TO SALES ORDER FOR FINAL TORQUE SETTING AND VANE POSITION****

10/23/09	ADDED TRIANGLES	B
7/30/09	RELEASED	27417
LET	DATE	ALTERATION

QUALITROL
DIMENSIONS AND TOLERANCES IN ACCORDANCE WITH ASME Y14.5M-1994

PH. (585) 586-1515
FAX (585) 377-0220
1385 FAIRPORT ROAD
FAIRPORT, NY 14450
FORM 0-473 REV. F 04/06/06

TITLE: 3.5 FLOW GAGE-1 SW.
ADJ. VANE FOR 45° FLOWS
MODEL NO. 092-051-01 CS-41486