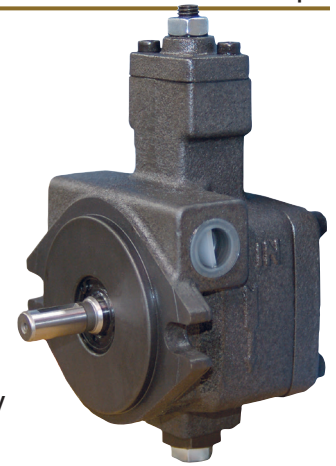


### Features

- **Variable Volume, Pressure Compensated Design:** Reduces heat, noise and horsepower requirements. Pump maintains constant pressure while matching system flow demands.
- **Simplified Circuit Design:** Direct spring operated compensator, no safety relief valve required.
- **Quiet Operation:** Noise levels as low as 67 dBA.
- **Compact and Simple Design:** Dependable operation-compensator not prone to contamination.
- **Long Service Life:** Sturdy construction, precise machining ensures durability
- **Volume Adjustment Standard:** Pumps can be reduced as much as 50% of total maximum displacement.

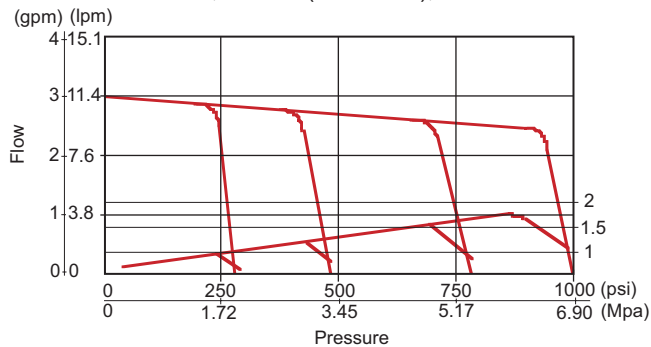


PCV3-1K-2AK-1

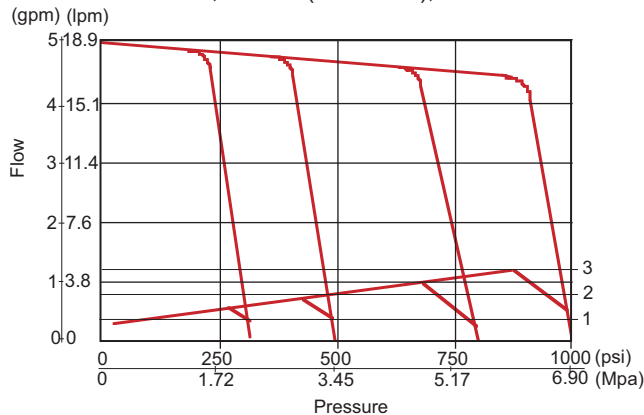
### Specifications

Typical performance curves based on ISO VG46 Oil @ 120°F, (49°C)

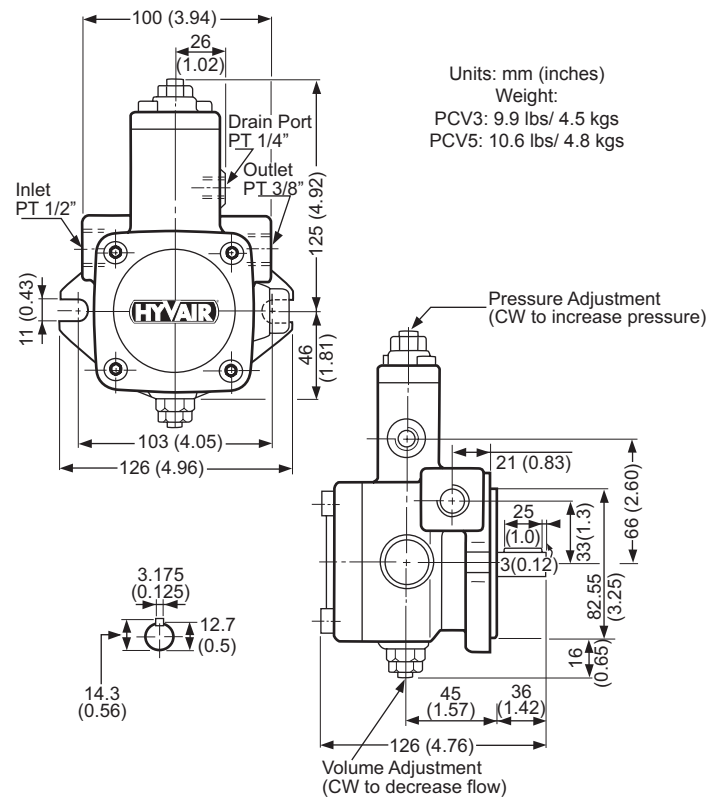
**PCV3** 1750 RPM, 3 GPM (at no load), 1000 PSI Max



**PCV5** 1750 RPM, 5 GPM (at no load), 1000 PSI Max



### Dimensional Data



### Ordering Information

#### PCV3 - 1K - 2AK - 1

Size (gpm)	Code	Press Range	Mounting Style	Series 1 Porting
3	300	150-300 psi	<b>2AK=</b> SAE-A, 2 Bolt, 1/2" Dia. Keyed Shaft x 1.42" Long w/ 1/8" Key Flow Adj. Std.	1/2" inlet, 3/8" outlet 1/4" case, all female NPT
5	600	200-600 psi		
	800	400-800 psi		
	1K	400-1000 psi		