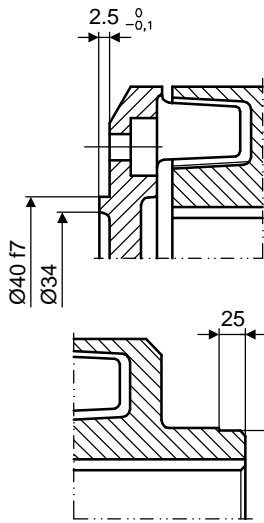
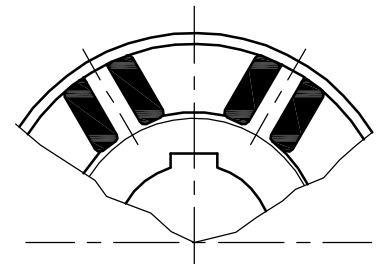
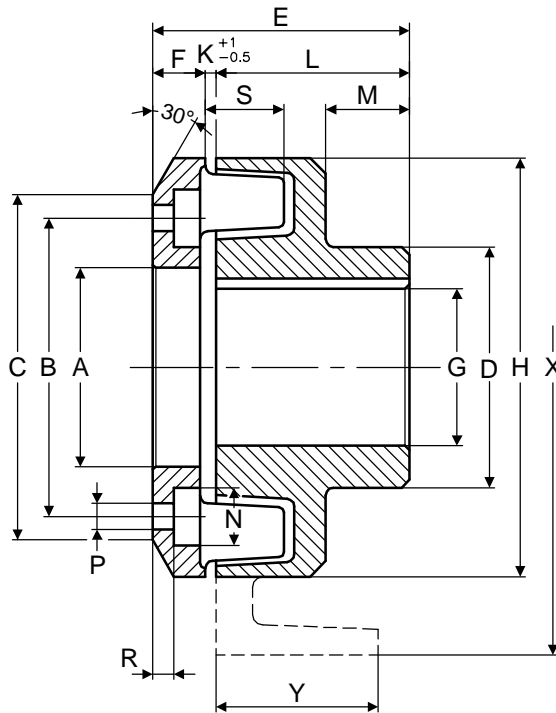


Solo per - Only for
BT 02



Solo per bilanciatura (G finito)
Only for balancing (finished G)
BT80

PER BILANCIATURA VEDERE TF 6369
BALANCE DIMENSIONS SEE TF 6369



Posizione della linguetta
per i diametri max.
Position of the keyway
for max diameter

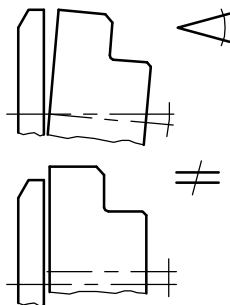
TIPO TYPE	GIUNTO COUPLING	A H7	B ±0.1	C	D	E	F	G		H	K	L	M	N	P		R	S	T f8	GOMMINO RUBBER BLOCK		T _{KN} Nm	T _{Kmax} Nm	PESO WEIGHT Kg	
								min.	max.						Nr.	Ø				TIPO TYPE	Nr.				
BT02	6	-	53	68	45	58.5	16.5	-	25	73	2	40	13	18	4	8	7	19	-	A	8	27	110	1.2	
BT10	7-8	40	73	88	70	77	15	-	42	110	2	60	27	18	6	8	4.5	22	-	B	12	108	296	3.2	
BT20/10				107	85	101	19	-	55	132		80	38					29	-	C					-
BT20	9-11-12	60	88.9	107	85	101	19	-	55	132	2	80	38	22	6	9	5.5	29	-	C	12	284	640	5.8	
BT30/20				142	100	105	22	-	70	170		3	35					27	-	C					16
BT30	13	80	122.2	142	100	105	22	-	70	170	3	80	35	26	8	11	6.5	27	-	C	16	628	1260	10	
BT40/30				120	138	25	-	80	110	65		26	8					11	6.5	27					-
BT40	15	90	136	156	120	138	25	-	80	170	3	110	65	26	8	11	7.5	27	-	C	16	628	1260	13.3	
BT50/40				220	135	139	26	35	90	250		45	45					-	D	16					628
BT50	17-19	125	160	220	135	139	26	35	90	250	3	110	45	26	12	11	8	45	-	D	16	1275	3744	26	
BT60/50				270	170	173	30	45	110	290		75	55					-	P	16					1275
BT60	21-24	160	228	270	170	173	30	45	110	290	3	140	75	35	8	15	14	55	-	P	16	4071	7045	42	
BT80	27-29	200	275	310	200	187	33	65	130	354	4	150	50	35	8	17	10	80	192	T	16	8976	16318	73	
BT80-S						212	38					170	70												15
BT80-SL						252	38					210	110												15

* T = coppia valida per uso con giunto idrodinamico e senza fattori di servizio
T = torque only for use with fluid coupling and without safety factor

Materiale giunto allineamento:
Flex coupling material:
GHISA/CAST IRON: EN-GJL-250

Materiale: Mescola speciale 70°Sh
Temperatura : -40°C +120°C
Material: Special mix 70°Sh
Temperature: -40°C +120°C

■ Per velocità superiore a 1500 RPM
ridurre i valori indicati del 50%
For speeds over 1500 RPM
reduce values by 50%



BT	K	≠	≠	BT	FASCIA FRENO BRAKE DRUM	
					X	Y
02	2	60'	0.2	02	140 x 40	150 x 40
10		55'	0.3	10	160 x 60	
20		50'	0.35	20	160 x 60	200 x 75
30	3	45'	0.4	30	200 x 75	250 x 95
40				315 x 118	315 x 118	
50				315 x 118	400 x 150	
60				400 x 150	500 x 190	
80	4	15'	0.6	80	500 x 190	