

TAG NO. 002512135100PSV 109

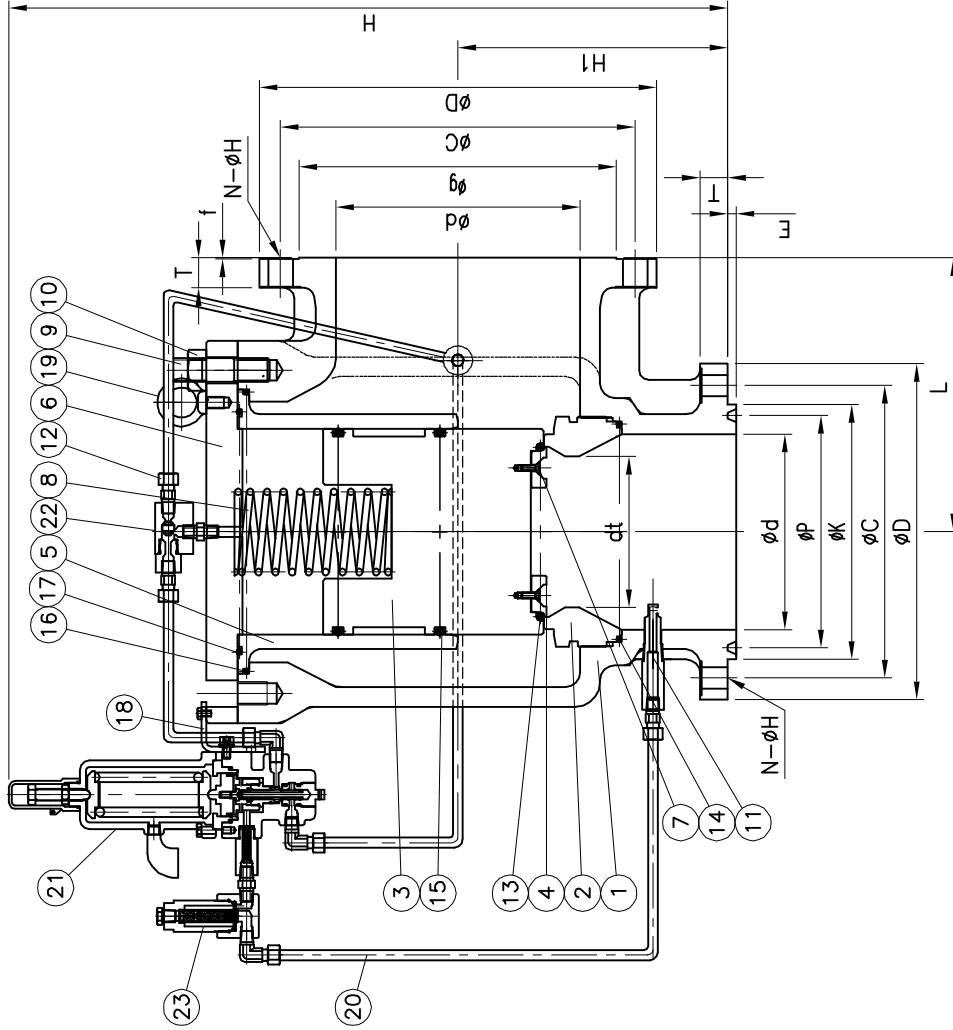
23	AUXILIARY FILTER	St.St. 316	1
22	BACKFLOW PREVENTOR	St.St. 316	1
21	PILOT CONTROL	MODULATING	1
20	TUBE	A213/A269 TP316/316L	4
19	I-BOLT	A276 304	2
18	BRACKET	A240 304	1
17	COVER SEAL	FKM	1
16	GUIDE SEAL	FKM	1
15	PISTON SEAL	FKM	2
14	NOZZLE SEAL	FKM	1
13	MAIN SEAT SEAL	PTFE	1
12	NIPPLE	A276 316	10
11	PLUG	A276 316	1
10	HEX. NUT	A194-8M	6
9	BODY STUD	A193-B8M	6
8	RETURN SPRING	SWOSC	1
7	RETAINER SCREW	A276 316	10
6	COVER	SA276 316	1
5	GUIDE	A351 CF8M	1
4	SEAT RETAINER	SA276 316	1
3	PISTON	SA276 316	1
2	NOZZLE	SA351 CF8M	1
1	BODY	SA216 WCB	1

NO	PART NAME	MATERIAL	Q'TY	REMARK
D.W.G NAME				
PILOT OPERATED SAFETY RELIEF VALVE				
MODULATING TYPE CONTROL				
MODEL NO				
JSV-PF100				
D.W.G NO				
REV				
JKS-1508118				
00				



J.K. JOKWANG I.L.I CO., LTD.

A4(297x210)



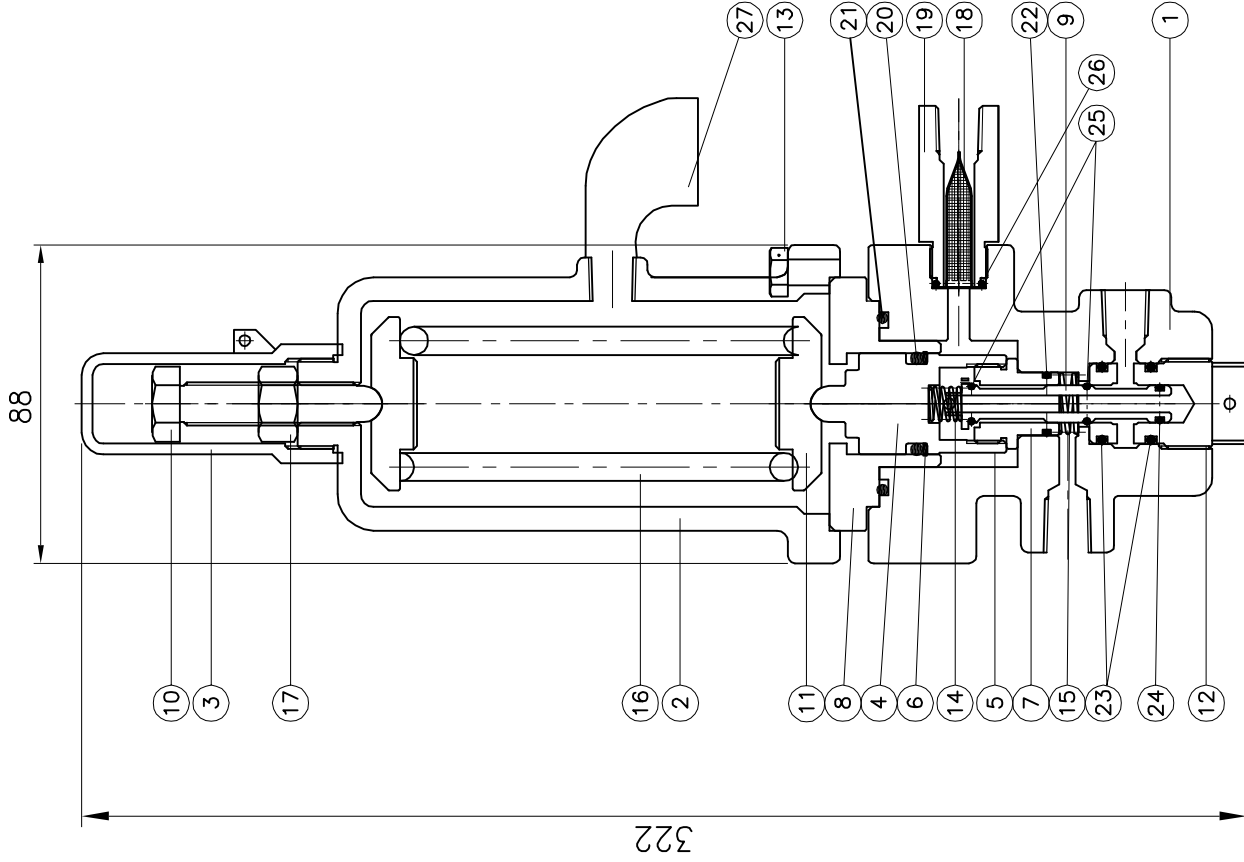
UNIT : mm

DIMENSIONS	INLET FLANGE ANSI B 16.5 CL1500 RTU		OUTLET FLANGE ANSI B 16.5 CL150 RF				W.T.(kg)													
	SIZE	dt	L	H	H1	L														
4X6"-L	51.03	221.8	251.52	660	311	100	194	161.92	241.3	54.8	7.92	8-35	279	152.4	215.9	241.5	25.4	1.6	8-22	140

JOKWANG I.L.I CO., LTD.

JK-B-111/0

TAG NO. 002512135100PSV 109



27	BUG VENT	C3604	1
26	FILTER SEAL	FKM	1
25	SEAT SEAL	FKM	2
24	SPOOL SEAL	FKM	1
23	SPOOL CAP SEAL	FKM	2
22	BODY SEAL	FKM	1
21	PISTON SEAL	FKM	1
20	GUIDE SEAL	FKM	1
19	FILTER HOUSING	A276 316	1
18	FILTER	A240 316	1
17	JAM NUT	A276 316	1
16	SPRING	SAE9254	1
15	LOW RETURN SPRING	SUS 316	1
14	SPOOL RETURN SPRING	SUS 316	1
13	BONNET CAP SCREW	A193 B8M	4
12	SPOOL CAP	A276 316	1
11	SPRING BUTTONS	A276 316	2
10	SPRING ADJUST SCREW	A276 316	1
9	SPOOL	A276 316	1
8	GUIDE	A276 316	1
7	INLET SEAT	A276 316	1
6	BACK UP RING	PTFE	1
5	RETAINER	A276 316	1
4	PISTON	A276 316	1
3	CAP	A351 CF8M	1
2	BONNET	SA276 316	1
1	BODY	SA276 316	1

NO	PART NAME	MATERIAL	Q'TY	REMARK
	DES	CHE	APP	DATE
				2015.08.11
				SCALE
				N S
D.W.G NAME				MODEL NO
PILOT OPERATED SAFETY RELIEF VALVE				JSV-PF100
MODULATING TYPE CONTROL				
D.W.G NO				REV
JKS-1508111				00



JK
JOKWANG I.L.I CO., LTD.