

Magnetic Actuator

Model: MA-1S

Cylindrical magnetic actuator for use with all of the euroswitch magnetically actuated range and to increase the sensing range of the FS Series.

Sensing ranges depend on the switch model.

Euroswitch products are designed and manufactured in the UK using our extensive experience and comprehensive in-house capabilities.



Properties

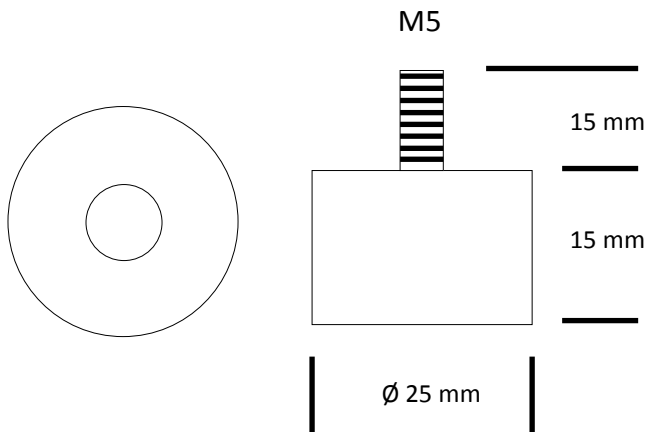
Body Shape	Bolt Magnet
Body Material	316 Stainless Steel
Dimensions	Ø 25mm x 30mm
Thread	M5 x 0.8 x 15mm

Sensing Ranges

Sensing range depends on the switch model and magnetic target used.

Switch Model No.	Range mm
ES-1000	5
ES-2000	8
ES-3000	6
ES-4000	8
ES-5000	6
FS-Series	4

Dimensions



Operating Principles

