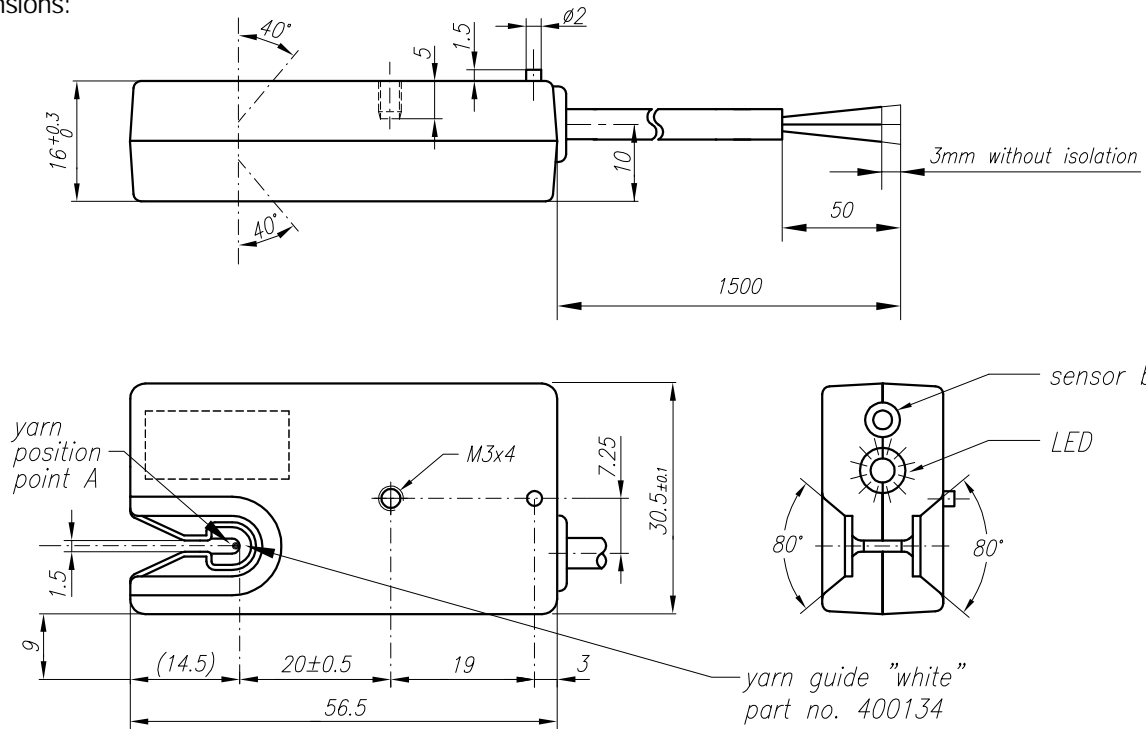
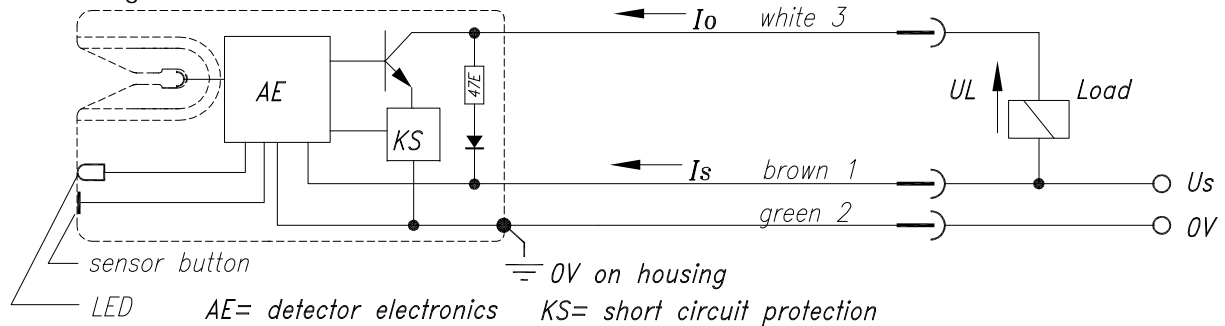


Dimensions:



Connection diagram:



Data:

- Application** : For staple fibre yarn and filament yarn at speeds higher than 4m/s (240m/min). The detector is working independent of titer as long as the yarn is touching the bottom of the yarn guide at the point A.
- Supply voltage U_s** : 24VDC±25%; max. Ripple 100Hz: 20% max. Ripple 300Hz: 20%
- Supply current I_s** : max. 12mA
- Switching ON delay t_{PON}** : Switching ON will result only during the uninterrupted running of the yarn and during the time t_{ton} .
- Reaction time t_R** : t_R = approx. 0.5s (after yarn break)
- Current I_o** : yarn is running: $I_o = 0A$
yarn is not running, after reaction time t_R : $I_o = \max. 0.5A$ 100%ED;
- Load voltage U_L** : $U_L = U_s - 3V$
- Function of sensor button** : By touching the sensor button the detector is switched in the "OFF" position, this is indicated by the illuminated LED.
- Switch "ON" delay t_{TON}** : After the yarn has been running uninterruptedly during the time t_{TON} = approx. 8s the detector is switched ON automatically; LED turns OFF.
- Function of the LED** : fully ON : yarn detector "OFF" & yarn not running
faintly ON : yarn detector "OFF" & yarn running
or yarn detector "ON" & yarn not running
- Delay time t_D** ; after the yarn begins to run: t_D max. = 2s.
- Mounting** : Yarn detector must be properly grounded to the machine body by means of the mounting bracket. (Minimum cross-section of mounting bracket: 20mm x 1.5mm).

Yarn detector 8048 755C "ELECTROTEX"

HebCon GmbH / Switzerland

designer date: 25.07.2003 name: W.Hug/Hu
drawn date: 12.09.2006 name: Mo.Aebi/Aeb

article number
8048'0017

status
02