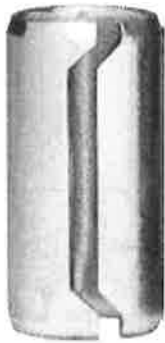
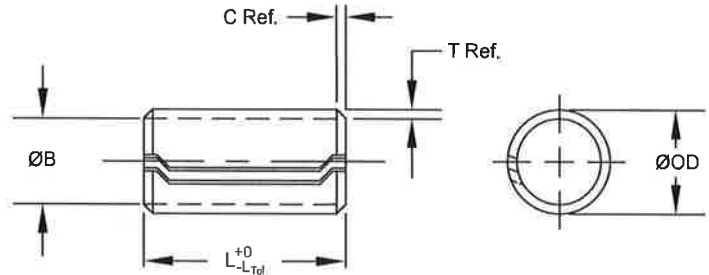


# SPIROL<sup>®</sup> Dowel Bushings



**Dowel Bushings** are used to locate components in conjunction with bolts which pass through the inside of the Dowel after it has been installed. Separate holes for locating pins are eliminated. The hardened Dowels also absorb shear loads, isolating the bolts from these forces.

## Series DB100



**MATERIAL**  
**B** High Carbon Steel

**FINISH**  
**K** Plain, Oiled

### DIMENSIONAL DATA

Metric									
Nominal Dowel Diameter	Min. ØID Installed <sup>1</sup>	ØOD		Wall Thickness T	Chamfer		Recommended Ø Hole Size		Min. Single Shear (kN) <sup>2</sup>
		Min.	Max.		C Length	ØB Max.	Min.	Max.	
6	6.20	7.92	8.18	0.70	1.40	7.50	7.67	7.80	10.9
8	8.20	10.35	10.61	0.90	1.40	9.85	10.10	10.23	18.7
10	10.20	12.75	13.01	1.10	1.40	12.20	12.50	12.63	28.4
12	12.25	15.50	15.76	1.45	1.80	14.85	15.25	15.38	45.4
16	16.25	20.25	20.51	1.80	1.80	19.50	20.00	20.13	74.6

Inch										
Nominal Dowel Diameter	Min. ØID Installed <sup>1</sup>	ØOD		Wall Thickness T	Chamfer		Recommended Ø Hole Size		Min. Single Shear (lbs.) <sup>2</sup>	
		Min.	Max.		C Length	ØB Max.	Min.	Max.		
.250	1/4	.256	.325	.335	.028	.050	.308	.315	.320	2,500
.312	5/16	.318	.401	.411	.035	.050	.381	.391	.396	4,000
.375	3/8	.381	.479	.489	.042	.050	.457	.469	.474	5,750
.500	1/2	.510	.640	.650	.057	.060	.615	.630	.635	10,500

Metric						
Nominal Bolt Diameter	Length					
	12	15	20	25	30	35
6						
8						
10						
12						
16						

LENGTH TOLERANCE  
+0.0mm -1.0mm

Inch				
Nominal Bolt Diameter	Length			
	.500 1/2	.750 3/4	1.000 1	1.250 1-1/4
.250	1/4			
.312	5/16			
.375	3/8			
.500	1/2			

LENGTH TOLERANCE  
+.000" -.030"

- <sup>1</sup> When installed in recommended hole.
  - <sup>2</sup> Single shear minimum, tested in accordance with ISO 8749 and ASME B18.8.2 Appendix B. Testing can only be performed on Dowels greater than two diameters in length.
- On special order plated parts, all dimensions apply prior to plating.
  - Special lengths and sizes available upon request.

**To Order:** BUSH, Nominal Dowel Size x Length, Material, Finish, Series  
**Example:** BUSH 10 x 25 BK DB100