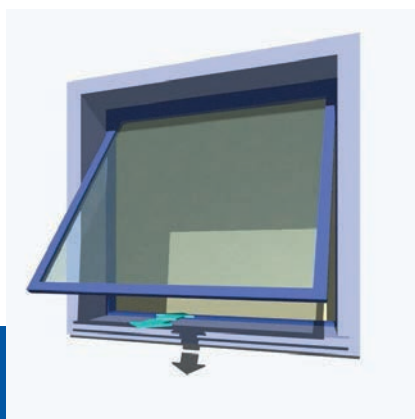


[Linea **Micro S**]

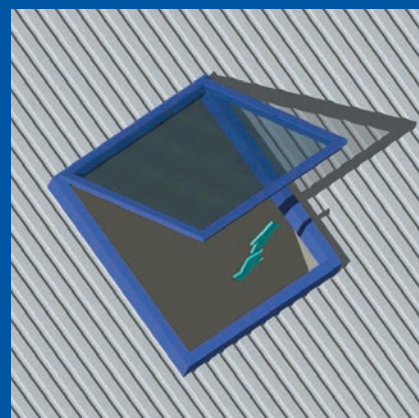
MINGARDI[®]
THE REFERENCE FOR WINDOW AUTOMATION

Attuatore a catena per:
finestre a sporgere, finestre a
vasistas, finestre per
mansarde.

Chain actuator for:
top hinged windows, bottom
hinged windows, roof
windows.



200N



CE

Dimensioni ridottissime
Very reduced dimensions

Catena a doppia maglia
Double-link chain

Basso consumo
Low consumption

Assenza di manutenzione
Maintenance free

Grado di protezione dispositivi elettrici: IP 20 / *Protection degree electrical devices: IP 20*

Fine corsa chiusura-apertura: elettronico-assorbimento / *Limit switch closing-opening: electronic-absorption*

Colori: Anodizzato Argento (A) - Anodizzato Nero (N) - RAL 9003 (B) / *Colours: Anodised Silver (A) Anodised Black (N) - RAL 9003 (B)*

Temperatura di funzionamento: -10°C +40°C / *Operating temperature: -10°C +40°C*

DATI TECNICI / TECHNICAL FEATURES

CODICE CODE	DESCRIZIONE DESCRIPTION	VOLTAGGIO VOLTAGE	SPINTA TRAZIONE THRUST TENSILE	CORSA STROKE	POTENZA ASSORBITA POWER CONSUMPTION	VELOCITÀ MIN. SPEED MIN.
2700115	Micro S 200 mm - (A)	230 V~ / 50 Hz	200 N	200 mm	30 W	ca. 10 mm/s
2700552	Micro S 200 mm - (N)	230 V~ / 50 Hz	200 N	200 mm	30 W	ca. 10 mm/s
2700327	Micro S 200 mm - (B)	230 V~ / 50 Hz	200 N	200 mm	30 W	ca. 10 mm/s
2700055	Micro S 250 mm - (A)	230 V~ / 50 Hz	200 N	250 mm	30 W	ca. 10 mm/s
2700567	Micro S 250 mm - (N)	230 V~ / 50 Hz	200 N	250 mm	30 W	ca. 10 mm/s
2700328	Micro S 250 mm - (B)	230 V~ / 50 Hz	200 N	250 mm	30 W	ca. 10 mm/s
2700116	Micro S 200 mm - (A)	24 V =	200 N	200 mm	20 W	ca. 10 mm/s
2700562	Micro S 200 mm - (N)	24 V =	200 N	200 mm	20 W	ca. 10 mm/s
2700329	Micro S 200 mm - (B)	24 V =	200 N	200 mm	20 W	ca. 10 mm/s
2700117	Micro S 250 mm - (A)	24 V =	200 N	250 mm	20 W	ca. 10 mm/s
2700578	Micro S 250 mm - (N)	24 V =	200 N	250 mm	20 W	ca. 10 mm/s
2700330	Micro S 250 mm - (B)	24 V =	200 N	250 mm	20 W	ca. 10 mm/s

I VALORI PRESTAZIONALI RIPORTATI NELLA TABELLA SONO VALORI MEDI VERIFICATI IN CONDIZIONI DI UTILIZZO STANDARD.
THE VALUES INDICATED ON THE TABLE ARE AVERAGE VALUES WERE RECORDED IN CONDITION OF NORMAL USE.

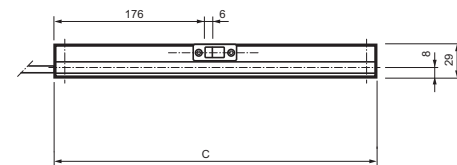
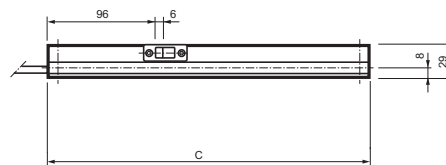
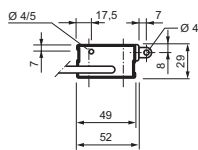
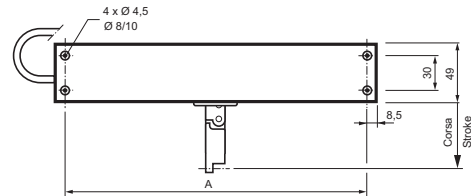
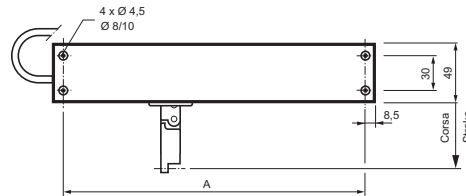
DESCRIZIONE DI CAPITOLATO

Attuatore elettrico lineare MINGARDI con movimento a catena articolata contenuta all'interno dell'involucro. Funzionamento con tensione di alimentazione 230V~ 50 Hz Conforme alle Direttive 2006/95 LVD - 2004/108 EMC. Funzionamento con tensione di alimentazione 24V CC Conforme alla Direttiva 2004/108 EMC. Dotato di sistema di fine corsa elettronico in apertura e ad assorbimento in chiusura. Collegabile in parallelo. Colori disponibili: anodizzato argento (A) - anodizzato nero (N) - RAL 9003 (B).

DESCRIPTION OF SPECIFICATIONS

MINGARDI linear electric actuator with reinforced double-sprocket chain inside the actuator body. Operating voltage: 230V~ 50 Hz in conformity with Directives 2006/95 LVD - 2004/108 EMC. Operating voltage: 24V DC in conformity with Directive 2004/108 EMC. Predisposed with electronic limit switch system for opening and closing absorption. Can be connected in parallel. Colours available: anodised silver (A) - anodised black (N) - RAL 9003 (B).

Micro S Disegno dimensionale / Scale drawing



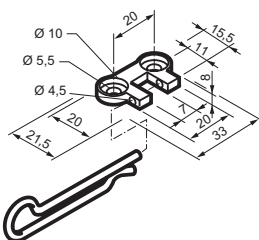
VERSIONE 24V CC
24V DC VERSION

Corsa/Stroke	A	C
200	224	261,4
250	269	286,4

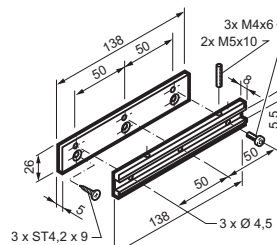
VERSIONE 230V AC
230V AC VERSION

Corsa/Stroke	A	C
200	324	341
250	349	366

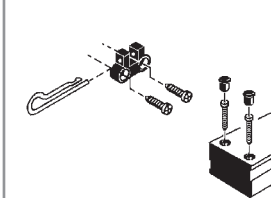
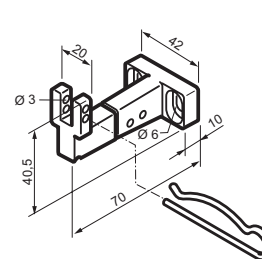
Accessori - Ricambi / Accessories - Spare parts



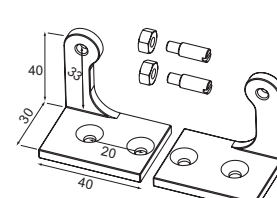
2700093



2700094



2700096



2700080

ACCESSORI DI FISSAGGIO / FIXING ACCESSORIES

CODICE CODE	DESCRIZIONE DESCRIPTION
2700093	Kit universale per applicazioni su finestre a sporgere Universal kit for fitting top-hinged windows
2700094	Kit universale per applicazioni su finestre a vasistas Universal kit for fitting bottom-hinged windows
2700096	Kit universale per applicazioni su finestre a mansarda Universal kit for fitting roof windows
2700080	Staffa basculante per applicazioni su bancale Pivoting bracket for horizontal plane applications

RICAMBI / SPARE PARTS

CODICE CODE	DESCRIZIONE DESCRIPTION
----------------	----------------------------

ACCESSORI DI COMANDO: per informazioni si prega di contattare il nostro servizio tecnico-commerciale
CONTROL ACCESSORIES: please contact our technical support service for further information