

8 7 6 5 4 3 2 1

GENERAL TOLERANCES ISO 2768-m

900

100

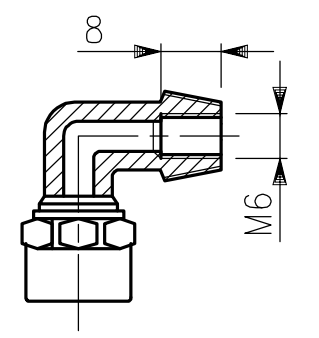
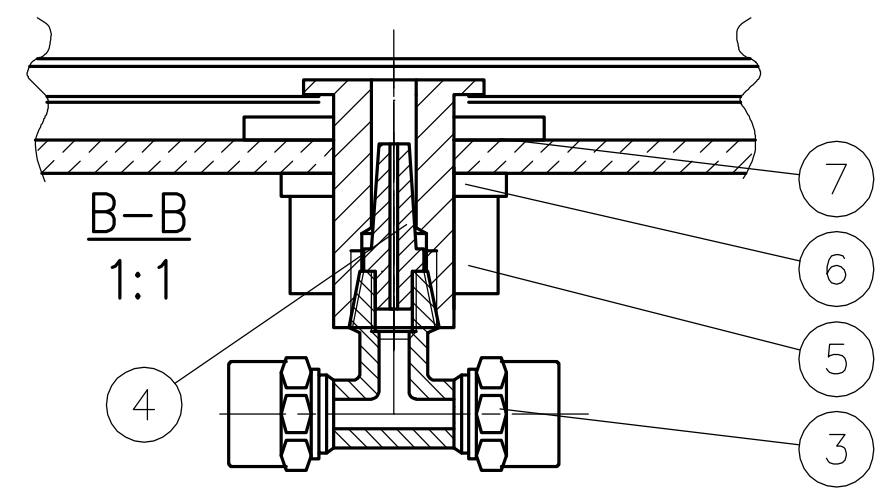
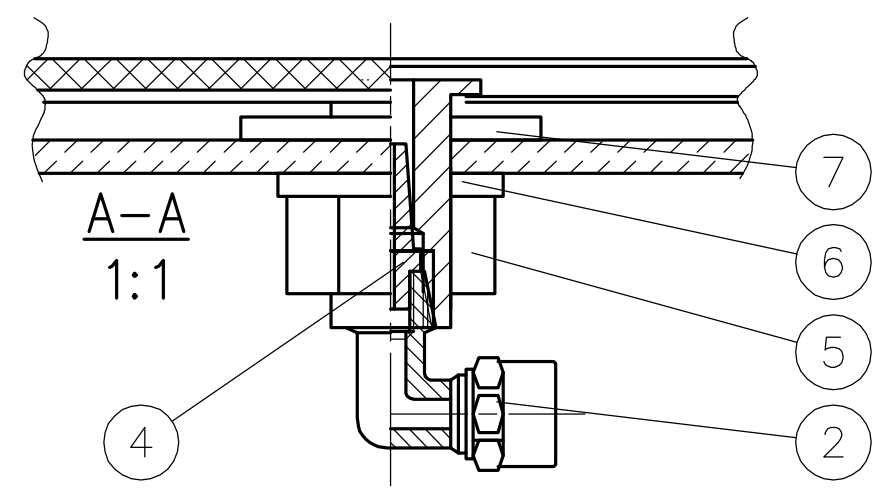
150

300

300

150

8 NOTE! DIRECTION OF FLOW IS MARKED ON MACHINE PLATE
HUOM! LAITEKILVESSÄ VIRTAUSSUUNTA MERKITTYNÄ



osiin 2 ja 3 M6 kierre suutinta varten

This drawing and the design shown therein is the property of Raute. Any duplication or use of this print for purposes other than for which it was furnished is hereby prohibited.

Do not take information by measuring from this copy

Date	Name	Description	No. of changes	Coord.	Rev.
19.02.2008	solk.ja	Osat 3. 4. ja 7. kpl määrää lisätty ja osat 5. ja 6. muutettu			B
12.11.2007	BRDA	Modified	1		A

SUPPLIED BY RAUTE PRECISION

SUPPLIED BY CLIENT	Work No.	Pcs	Actual Weight
	Drawn 25.10.2002 / solk.ja	Model Drawing C017556	Projection
	FLUIDIELEMENTTI FLE900	Scale 1:2.5	Size A3
	FLUID ELEMENT	OKP	Revision B
Project Pos. Code FL- E900 V0003008		Drawing No.	Printed: 23.05.2014

LAHTI PRECISION