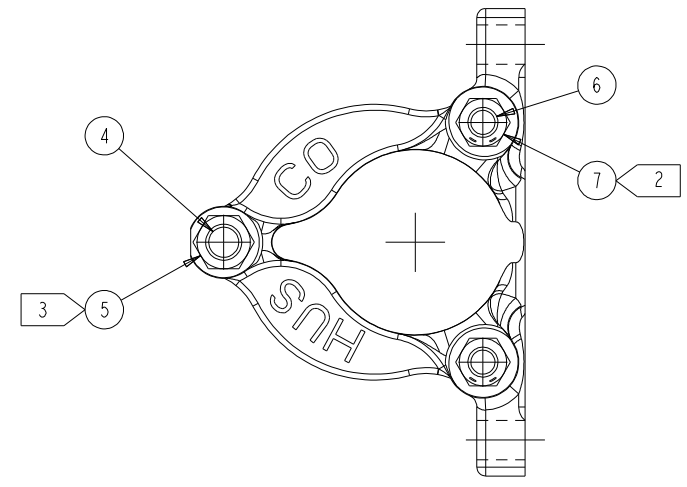
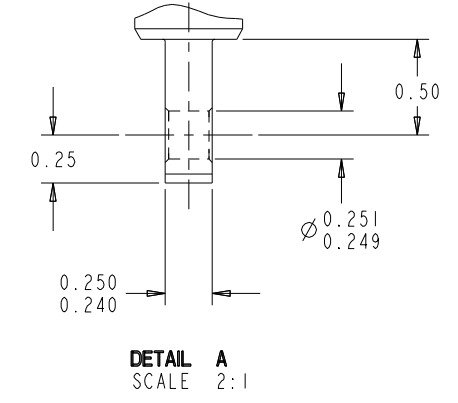
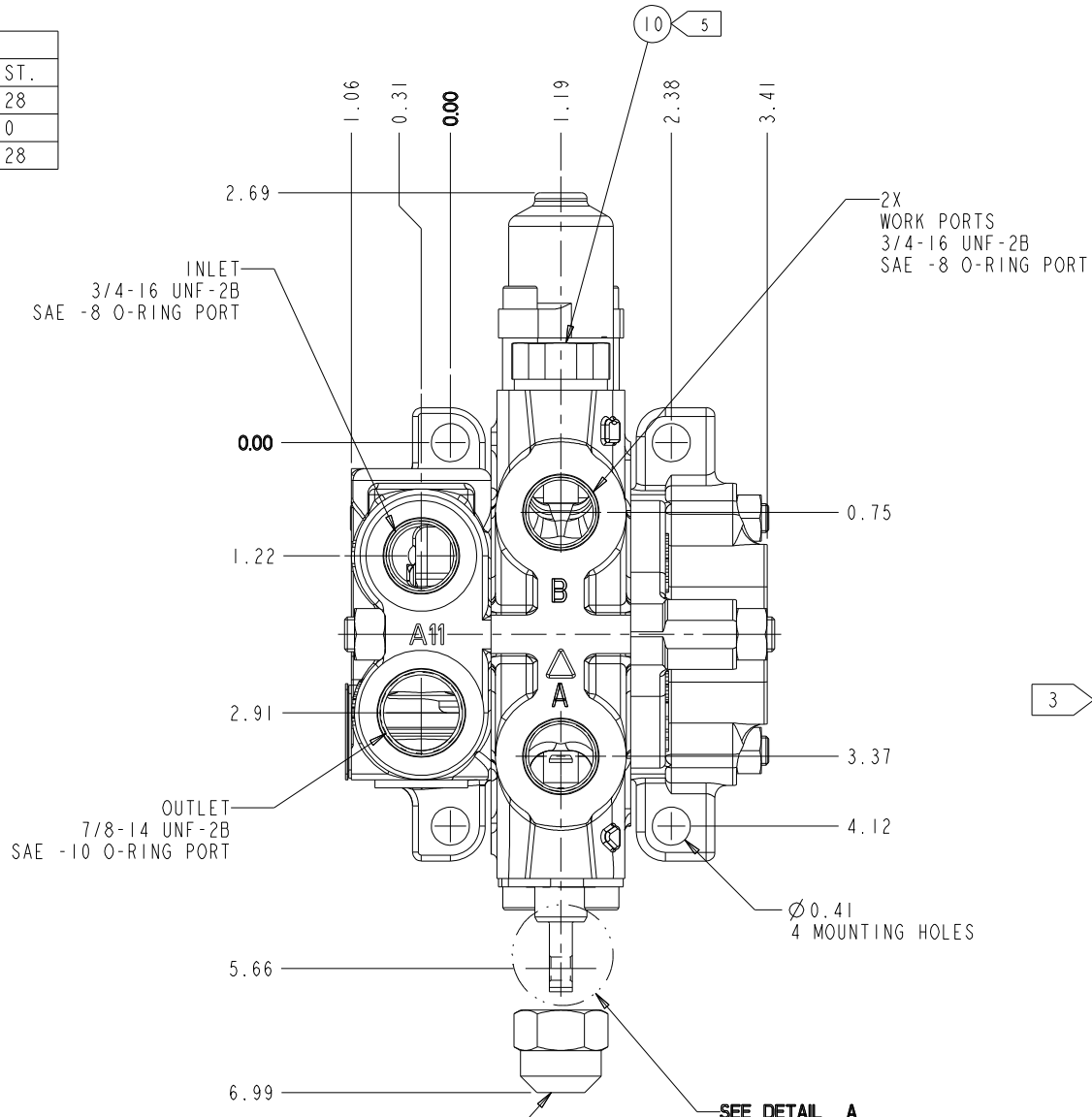
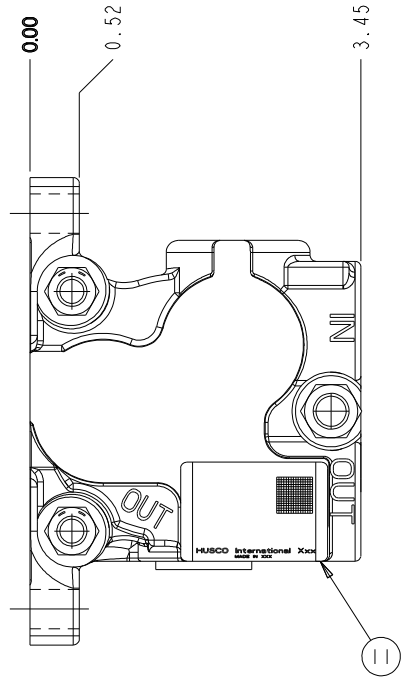


- LUB. SEALS PER HUSCO SPEC. 851-101
- STAMP NAMEPLATE PER HUSCO SPEC. 852-310
- PREPARE FOR SHIPMENT PER HUSCO SPEC. 853-105
SEE BOM FOR PREP FOR SHIPMENT PLUGS

NOTICE: INFORMATION HEREIN PRESENTED IS CONFIDENTIAL PROPRIETARY INFORMATION OF HUSCO. ANY PERSON ACCEPTING THIS INFORMATION IS REQUIRED TO ACCEPT THE SAME IN CONFIDENCE. TO AGREE TO MAKE NO DISCLOSURE, USE, OR DUPLICATION THEREOF EXCEPT AS AUTHORIZED BY HUSCO AND TO RETURN THE SAME ON REQUEST.

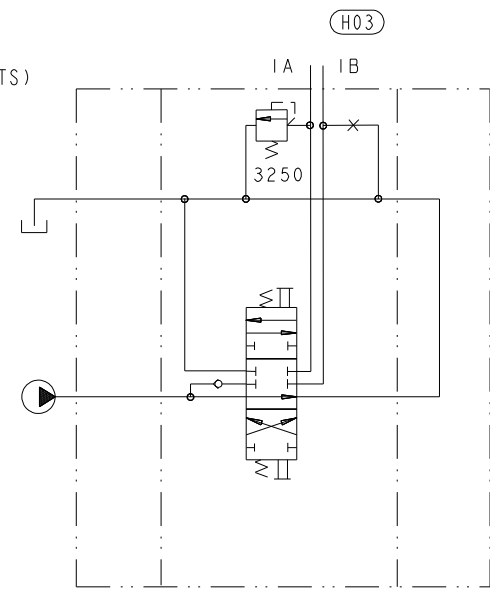
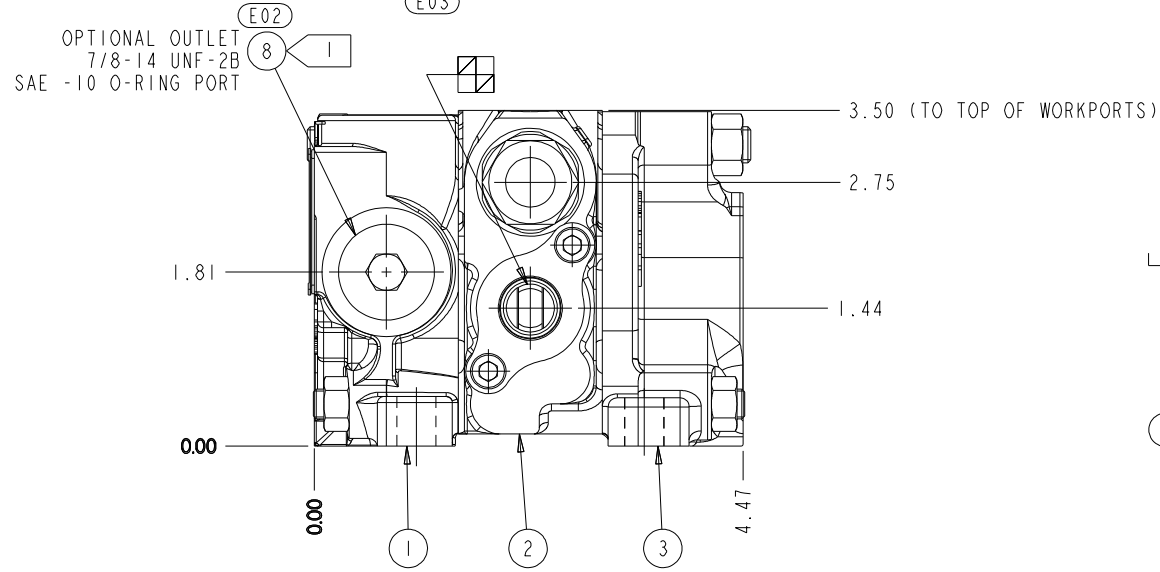
REV	ECN No.	DATE	NAME/CHGR
E03	44255	30AUG12	SUR
F01	NOW PRO-E 44742	14MAR13	SUR
G02	51372	20MAR18	PPL
H04	51951	19NOV18	NPC

SYM.	SPOOL MOVEMENTS	MANUAL	
		IN/OUT	DIST.
	HI-PRESS. "B" - LOW PRESS. "A"	OUT	.28
	HOLD "A" & "B" (NEUTRAL)	N/A	0
	HI-PRESS. "A" - LOW PRESS. "B"	IN	.28



THIS VALVE CONTAINS VITON O-RINGS

- | | |
|---|--|
| 1 | TORQUE PER HUSCO SPEC. 807-107 |
| 2 | TORQUE PER HUSCO SPEC. 812-101 |
| 3 | TORQUE PER HUSCO SPEC. 812-102 |
| 4 | TO BE SET AT 3250 ± 50 PSI @ 1.0 GPM
TORQUE PER HUSCO SPEC. 805-101 |
| 5 | TORQUE PER HUSCO SPEC. 805-101 |



VALVE SPECIFICATIONS:

PART NUMBER:
PUMP OUTPUT: 4-6 GPM
OPERATING PRESSURE: 3000 PSI
OPERATING TEMP.: -20°F TO +200°F
OIL TYPE: TEXACO RANDO TYPE 3
CENTERING SPRING IS ADEQUATE TO RETURN SPOOL TO NEUTRAL AT A MAXIMUM OF 3000 PSI @ 12 GPM

HUSCO TEST SPECIFICATIONS:

- TEST WITH PETROLEUM BASE SAE 10W HYD OIL AT 110°F ± 10°F (129 SSU)
- VALVE TO BE TESTED AT: 3000 ± 50 PSI @ 12 GPM
- LEAKAGE RATES AT 1000 PSI:
 - SPOOL: ALL PORTS - 1.75 CIPM MAX.
 - LOAD CHECK: ALL PORTS NOT TO EXCEED 5 CIPM MAX.
- SPECIAL TEST SPECIFICATIONS: TP-1002
- SPOOL CENTERING TEST PER ABOVE INFO.

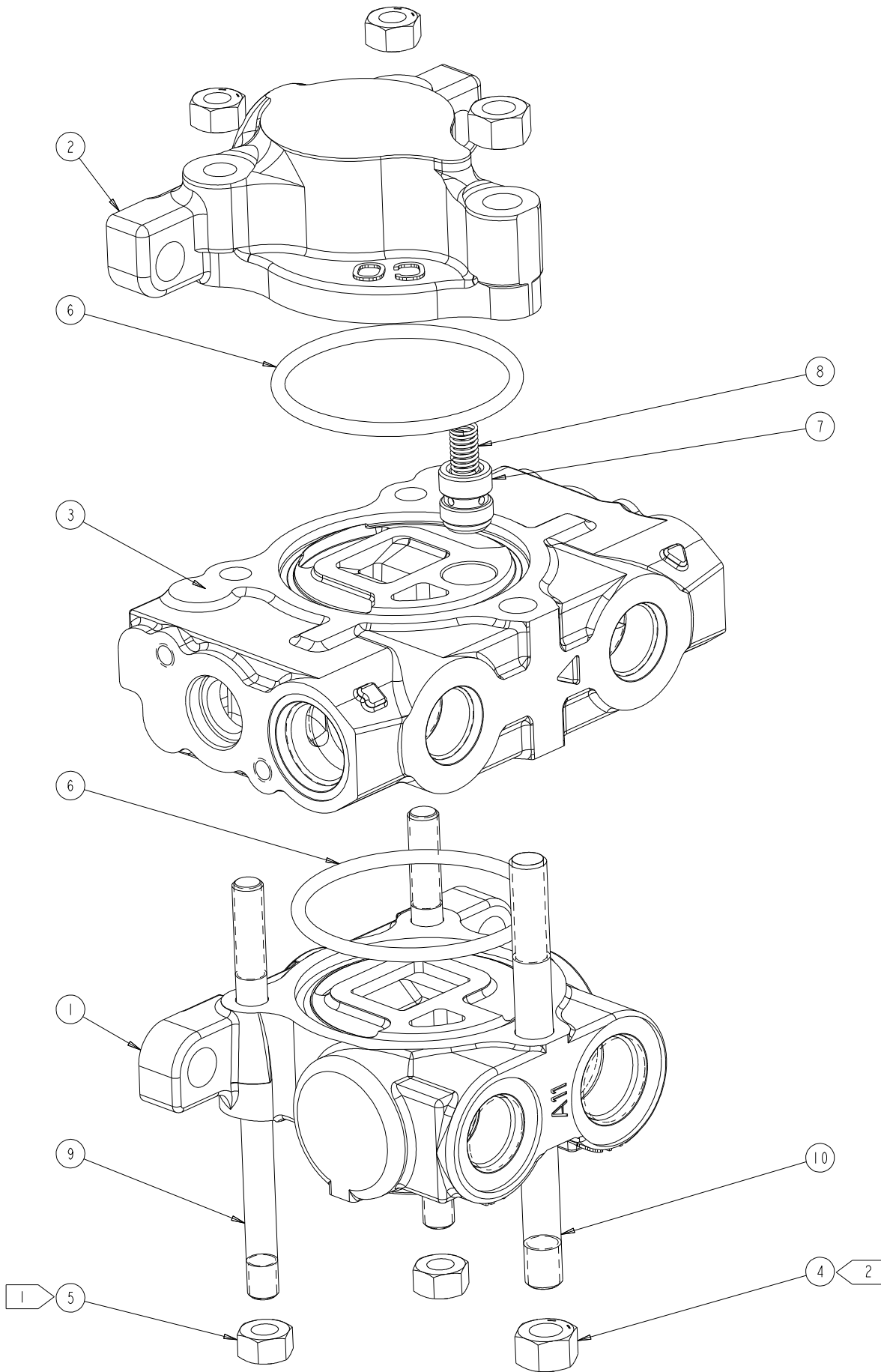
MASS = 11.02 LBS. (5.00 Kg.)
TOTAL SURFACE AREA = 2333.26 CM²

ITEM	PART NUMBER	QTY	DESCRIPTION	REV/ISS
11	55684	1	NAMEPLATE ASSY.	G01
10	52610	1	SHUT-OFF PLUG ASSY.	H01
9	52710-J/3250/1	1	RELIEF VALVE ASSY.	
8	400477	1	PLUG ASSY.-SAE	
7	1861	4	NUT-SPECIAL	
6	5069-1	2	TIE ROD	
5	1052	2	NUT-SPECIAL	
4	5089-1	1	TIE ROD	
3	5003-A1	1	OUTLET SECTION ASSY.	F01
2	5002-A1441	1	SPOOL SECTION ASSY.	E01
1	5001-A215	1	INLET SECTION ASSY.	

DIMENSIONS ARE IN INCHES		SCALE: 1:1	THIRD ANGLE PROJECTION	
UNLESS OTHERWISE SPECIFIED, DETAILS TO BE MANUFACTURED IN ACCORDANCE WITH: HUSCO SPEC. 100-101		DATE: 13MAR13	DRN BY: SUR	
UNTOLERANCED DIMENSIONS ON ASSY. DWG. ARE FOR REF. ONLY		CHKD BY: GDM	APPVD BY: JEO	NAME: CONTROL VALVE ASSY.
MATERIAL: -		DRWING SIZE: D	CHECKED: N	ORIG DOC: W13352
HEAT TREAT: -		EON NO: 51951		EXP NO: -
PLATING: -		HUS PRO/E		PART NO: 5000-A62
				REV/ISS: H04
				SHEET: 1 OF 3

NOTICE: INFORMATION HEREIN PRESENTED IS CONFIDENTIAL PROPRIETARY INFORMATION OF HUSCO. ANY PERSON ACCEPTING THIS INFORMATION IS REQUIRED TO ACCEPT THE SAME IN CONFIDENCE. TO AGREE TO MAKE NO DISCLOSURE, USE, OR DUPLICATION THEREOF EXCEPT AS AUTHORIZED BY HUSCO AND TO RETURN THE SAME ON REQUEST.

REV	ECN No.	DATE	NAME/CHGR
E03	44255	30AUG12	SUR
F01	NOW PRO-E 44742	14MAR13	SUR
G02	51372	20MAR18	PPL
H04	51951	19NOV18	NPC



1	TORQUE PER HUSCO SPEC. 812-101
2	TORQUE PER HUSCO SPEC. 812-102
	LUBE SEALS PER HUSCO SPEC 851-101
	HONE SPOOL BORE PER HUSCO SPEC. 204-XXA

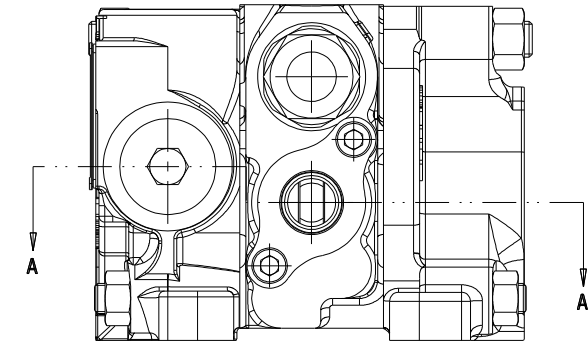
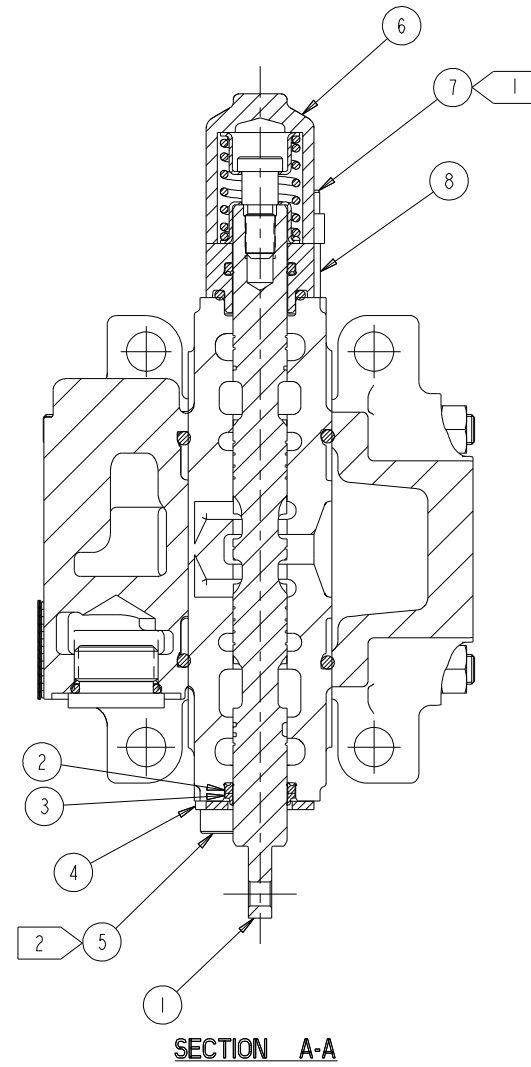
ITEM	PART NUMBER	QTY	DESCRIPTION
10	5089-1	1	TIE ROD
9	5069-1	2	TIE ROD
8	5450	1	SPRING
7	5011-1	1	POPPET-C.V.
6	43-228	2	O-RING
5	1861	4	NUT-SPECIAL
4	1052	2	NUT-SPECIAL
3	5005-A2	1	HOUSING-SPOOL
2	5006-A1	1	HOUSING-OUTLET
1	5004-A11	1	HOUSING-INLET

H04

DIMENSIONS ARE IN INCHES		SCALE	1:1	THIRD ANGLE PROJECTION	
UNLESS OTHERWISE SPECIFIED, DETAILS TO BE MANUFACTURED IN ACCORDANCE WITH: HUSCO SPEC. 100-101		DATE	13MAR13		
UNTOLERANCED DIMENSIONS ON ASSY. DWG. ARE FOR REF. ONLY		DRAWN BY	SUR	NAME	CONTROL VALVE ASSY.
		CHKD BY	GDM	APPVD BY	JEO
		DRAWING SIZE	D	CHECKED	N
		ORIG DOC	W13352	EXP NO	-
		HEAT TREAT		ECN NO	51951
		PLATING		PART NO	5000-A62
			HUS PRO/E	SHEET	2 OF 3

NOTICE: INFORMATION HEREIN PRESENTED IS CONFIDENTIAL PROPRIETARY INFORMATION OF HUSCO. ANY PERSON ACCEPTING THIS INFORMATION IS REQUIRED TO ACCEPT THE SAME IN CONFIDENCE. TO AGREE TO MAKE NO DISCLOSURE, USE, OR DUPLICATION THEREOF EXCEPT AS AUTHORIZED BY HUSCO AND TO RETURN THE SAME ON REQUEST.

REV	ECN No.	DATE	NAME/CHGR
E03	44255	30AUG12	SUR GDM
F01	NOW PRO-E 44742	14MAR13	SUR GDM
G02	51372	20MAR18	PPL ABW
H04	51951	19NOV18	NPC PGC



1	TORQUE PER HUSCO SPEC. 808-101
2	TORQUE PER HUSCO SPEC. 809-101
	LUBE SEALS PER HUSCO SPEC. 851-101

ITEM	PART NUMBER	QTY	DESCRIPTION
8	53800	2	SPACER
7	3424	2	CAP SCREW-SOC. HD.
6	5028	1	CAP-SPOOL
5	3432	2	CAP SCREW-SOC. HD.
4	5012-A	1	PLATE-SEAL
3	50588	1	WIPER
2	50587	1	SEAL-SPOOL
1	SA_50239_AE	1	SPOOL ASSY.

DIMENSIONS ARE IN INCHES		SCALE: 1:1	THIRD ANGLE PROJECTION	HUSCO INTERNATIONAL WAUKESHA, WISCONSIN USA		
UNLESS OTHERWISE SPECIFIED, DETAILS TO BE MANUFACTURED IN ACCORDANCE WITH: HUSCO SPEC. 100-101		DATE: 13MAR13	DRN BY: SUR			
UNTOLERANCED DIMENSIONS ON ASSY. DWG. ARE FOR REF. ONLY		CHKD BY: GDM	APPVD BY: JEO	NAME: CONTROL VALVE ASSY.		
MATERIAL: -	HEAT TREAT: -	DRWING SIZE: D	CHECKED: N	ORIG DOC: W13352	EXP NO: -	
PLATING: -				ECN NO: 51951	PART NO: 5000-A62	REV/ISS: H04
HUS PRO/E				SHEET: 3	OF: 3	