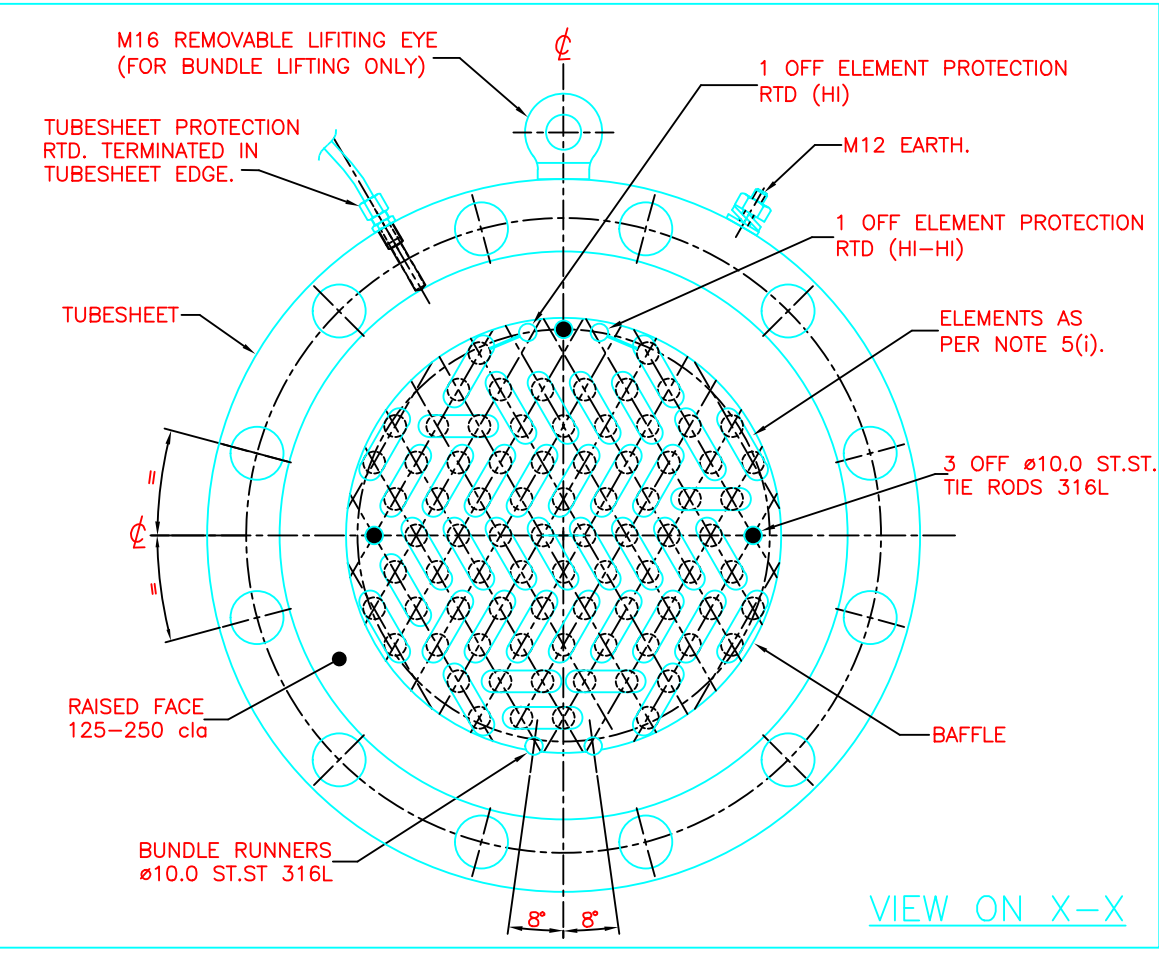


- NOTES:**
- SPECIFICATION:**
232kW, 400V, 3Ph, 3 WIRE DELTA, 50Hz, SINGLE STAGE.
 - CERTIFICATION:**
EExe II T3 ZONE 1 TO BS5501: PARTS 1 & 6: 1977. EN50014 & EN50019. 'BASEEFA' CERTIFICATE No. Ex95Y3110X (ISES).
 - REFERENCE DRAWINGS:**
(i) WIRING DIAGRAM: 13595.01.03
 - MAIN COMPONENTS**
(i) TUBESHEET: 10" 150# ANSI B16.5, RF BLIND. MATERIAL: ASTM A105-N (NACE).
(ii) TERMINAL BOX: ST.ST. 316 (EExe CERTIFIED)
(iii) BAFFLES: 3mm THICK ST.ST. 316L.
(iv) INSTRUMENT JUNCTION BOX: TB11. MATERIAL: ST.ST. 316.
(v) ANTI-CONDENSATION HEATER: 50W, 110V, EExe II T3 SELF LIMITING.
(vi) TUBESHEET COUPLINGS: MATERIAL ST.ST. 316.
 - ELEMENT DETAILS.**
(i) 36 ACTIVE + 4 INSTALLED SPARES + 1 HEATEX MANUFACTURING SPARE 6445W, 400V. MATERIAL: ϕ 12.5mm INCOLOY 800.
 - FINISH**
(i) TUBESHEET: TO CLIENT SPECIFICATION SPC-1104-EL-001 REV C. SYSTEM 4 COLOUR ALUMINIUM.
(ii) TERMINAL BOX: NATURAL ST.ST. 316
 - OVERTEMPERATURE PROTECTION:**
(i) 2 OFF ELEMENT PT100 RTD'S CONNECTED TO ELEMENTS SHOWN.
(ii) 1 OFF TUBESHEET PT100 RTD TERMINATED IN TUBESHEET SIDE.
 - TRANSMITTERS**
(i) OVERTEMPERATURE SENSING DEVICES CONNECTED TO KAMSTRUP FLEXTOP 2201 EX TRANSMITTERS. EExia IIC T4 TO T6.
 - CABLE ENTRIES:**
(i) POWER CABLE ENTRY INTO TERMINAL BOX VIA 1 OFF UNDRILLED GLANDPLATE, (APERTURE SIZE 290x140) GLANDPLATE MATERIAL: ST.ST. 316L.
(ii) CONTROL ENTRY INTO JUNCTION BOX VIA 1 OFF UNDRILLED GLANDPLATE, (APERTURE SIZE 261x80) GLANDPLATE MATERIAL: ST.ST. 316L.
 - TESTING:**
(i) HYDROTEST TO WI/09/110, TEST METHOD 1, PRESSURE 6.0. DURATION 30 MINS.
(ii) ELECTRICAL TEST TO WI/09/114
(iii) HELIUM LEAK TEST WI/09/134
 - ESTIMATED WEIGHT:**
(i) HEATER BUNDLE: 362 Kg

NOTE: THE CLIENT SHOULD ENSURE THAT THE TERMINAL BOX IS NOT SUBJECTED TO DIRECT SUNLIGHT AT AMBIENT TEMPERATURES ABOVE 30°C, THIS IS TO ELIMINATE TERMINAL BOX HEATING THROUGH SOLAR GAIN.

THIS HEATER BUNDLE IS NOT SELF SUPPORTING AND REQUIRES INTERNAL SUPPORT TO ENSURE THAT NO DAMAGE OCCURS. IDEALLY SUPPORT SHOULD RUN THE FULL LENGTH OF THE HEATER BUNDLE LOCATING ON THE BUNDLE RUNNERS PROVIDED.



HEATEX WORKS NOTE:

| ITEM No. | QUANTITY | TAG No. |
|----------|----------|---------------------|
| 1 | 2 OFF | F-8160/2 & F-8160/4 |
| 2 | 2 OFF | F-8160/1 & R-8160/3 |

BUNDLE CONSTRUCTION:
RUNNER BARS: FULLY WELDED TO BAFFLES (2mm MAX / 1mm MIN PROTRUSION).
BAFFLES: TIE RODS SCREWED INTO TUBESHEET. BAFFLES TACK WELDED TO TUBESHEET. END BAFFLE SECURED (IF FITTED) USING M10 FULL NUTS

NAMEPLATES/LABELS:
CERTIFICATION NAMEPLATE (T/BOX LID)
VOLTAGE WARNING LABEL (T/BOX LID)
ACH WARNING LABEL (T/BOX LID)
HYDROTEST LABEL (TUBESHEET EDGE)
I.S. WARNING LABEL (J\BOX LID)

| | | | | |
|----------------------------------------------------------------------------|---|------------------------------|-------|-------------|
| NO MODIFICATIONS PERMITTED WITHOUT THE APPROVAL OF THE Q.A. MANAGER. | 4 | | | |
| DOES THIS CHANGE AFFECT ANY CERTIFICATION OR CERTIFICATE SCHEDULE DRAWING? | 3 | AS BUILT | MH | |
| IF YES, RECORD THE DCN No. IN THE COLUMN TO THE RIGHT. | 2 | CLIENT COMMENTS INCORPORATED | MH | SUL MSP |
| Y/N-DCN No. | 1 | FIRST ISSUE | MH | DMH SUL |
| REV. COMMENTS | | | DRWN. | CHKD. APPR. |

CERTIFIED PRODUCT

THIS DRAWING IS THE COPYRIGHT AND PROPERTY OF HEATEX LTD NORFOLK ENGLAND

EX HEAT www.exheat.com

BSI NATIONAL ACCREDITATION OF CERTIFICATION BODIES Certificate No. FM 26078

SCALE NOT TO SCALE
3rd ANGLE PROJECTION

TOLERANCES UNLESS OTHERWISE STATED
0 ± 1.5mm
0.0 ± 0.5mm
0.00 ± 0.25mm
0.000 ± 0.1mm
ANGULAR ± 2'

ALL DIMENSIONS IN MILLIMETRES UNLESS OTHERWISE STATED
DO NOT SCALE!
IF IN DOUBT, ASK!

WHERE ELECTRONIC DOCUMENTS ARE SUPPLIED, THE END PRODUCT MUST CONFORM TO THE PAPER ORIGINAL.

TITLE: 232kW TEG REBOILER HEATER BUNDLE GENERAL ARRANGEMENT DRAWING TAG No. F-8160/1/2/3/4

PROJECT DOCUMENT NUMBER: HEATEX DRAWING NUMBER: 13595.01.01 ISSUE: 2

PATH: I:\13595\135950101.DWG FORMAT: AUTOCAD R14