



**The Timken Company**

4500 Mt Pleasant St. NW

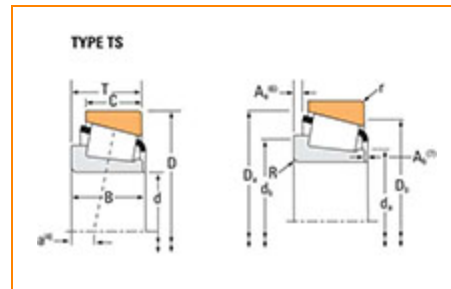
N. Canton, OH 44720

Phone: (234) 262-3000

E-Mail: [CustomerCAD@timken.com](mailto:CustomerCAD@timken.com) • Web site: [www.timken.com](http://www.timken.com)

## Part Number A4138, Tapered Roller Bearings - Single Cups - Imperial

This is the most basic and most widely used type of tapered roller bearing. It consists of two main separable parts: the cone (inner ring) assembly and the cup (outer ring). It is typically mounted in opposing pairs on a shaft.



[Specifications](#) | [Dimensions](#) | [Abutment and Fillet Dimensions](#) | [Factors](#)

### Specifications

|                 |          |
|-----------------|----------|
| Series          | A4000    |
| Cup Part Number | A4138    |
| Design Units    | Imperial |

### Dimensions

|                        |                        |
|------------------------|------------------------|
| D - Cup Outer Diameter | 1.3775 in<br>34.989 mm |
| C - Cup Width          | 0.3437 in<br>8.730 mm  |

### Abutment and Fillet Dimensions

|   |                     |
|---|---------------------|
| <b>r - Cup Backface "To Clear" Radius<sup>1</sup></b> | 0.050 in<br>1.27 mm |
| <b>Da - Cup Frontface Backing Diameter</b>            | 1.28 in<br>32.51 mm |
| <b>Db - Cup Backface Backing Diameter</b>             | 1.14 in<br>28.96 mm |

## Factors

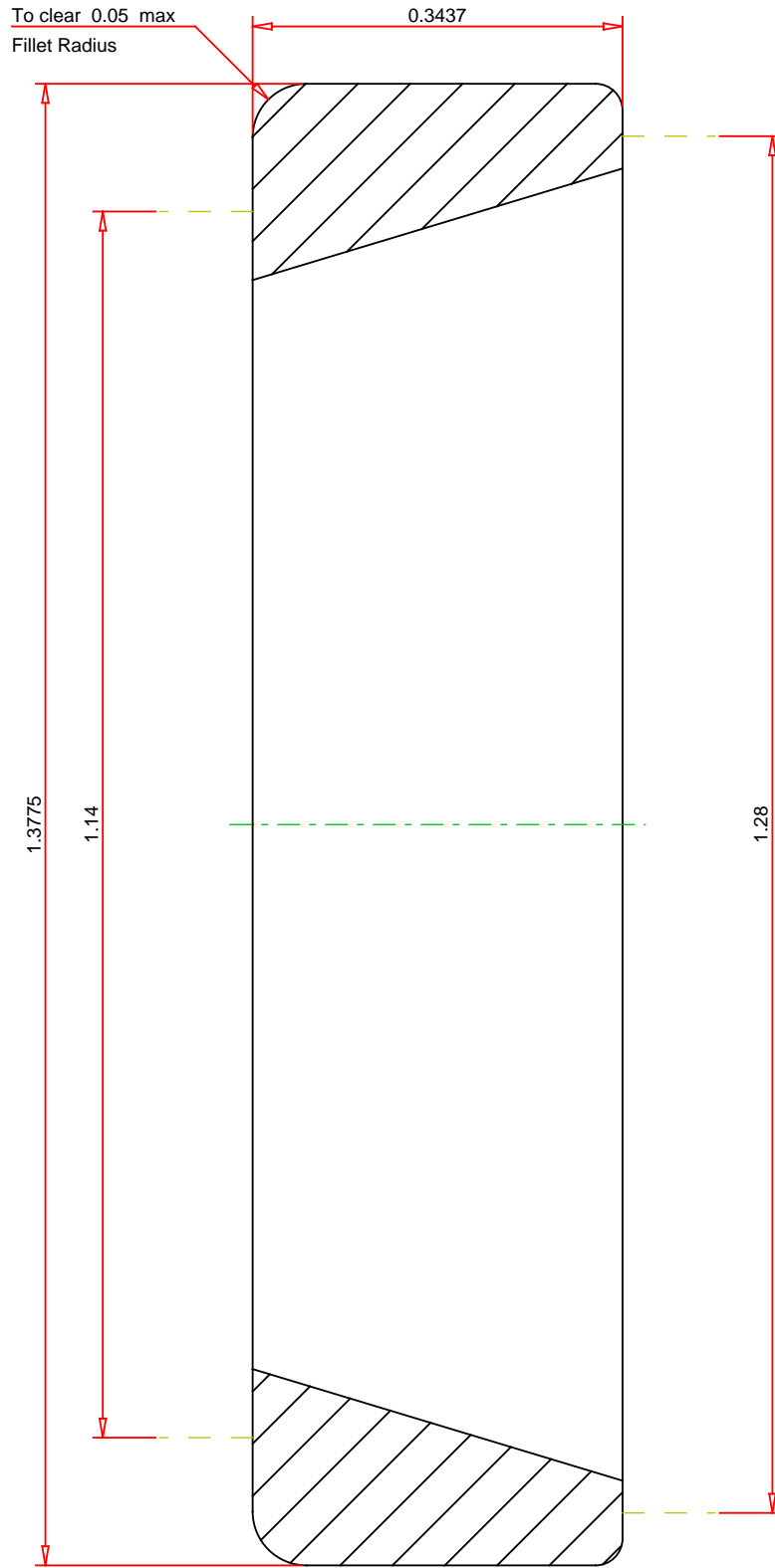
|   |        |
|---|--------|
| <b>e - ISO Factor<sup>2</sup></b>       | 0.45   |
| <b>Y - ISO Factor<sup>3</sup></b>       | 1.32   |
| <b>Cg - Geometry Factor<sup>4</sup></b> | 0.0355 |

<sup>1</sup> These maximum fillet radii will be cleared by the bearing corners.

<sup>2</sup> These factors apply for both inch and metric calculations. Consult your Timken representative for instruction on use.

<sup>3</sup> These factors apply for both inch and metric calculations. Consult your Timken representative for instruction on use.

<sup>4</sup> Geometry constant for Lubrication Life Adjustment Factor a3l.



IMPERIAL UNITS

**TIMKEN**®

A4138  
SINGLE TAPERED CUP

**THE TIMKEN COMPANY**  
NORTH CANTON, OHIO USA