

M 100i Multi-jet Meter ARTIST

e^{sens} communication interface

- Multi-jet wet-dial meter for cold water
- Nominal size Q₃ 2.5 to 25 m³/h
- Ultra-reliable interface for communication modules
- EC type examination certification (MID) up to R160H/R80V
- conText[®] marking system

M100i
artist



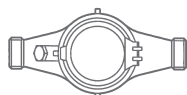
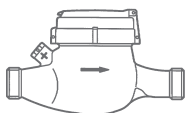
EC type examination certificate
DE-08-MI001-PTB019

Performance characteristics acc. to MID approval for horizontal installation

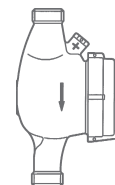
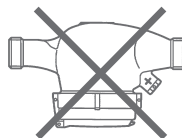
Nominal size	DN	mm	15	20	25	25	32	40	50
			inches	½	¾	1	1	1 ¼	1 ½
Continuous flow	Q ₃	m ³ /h	2.5	2.5	4	6.3	10	16	25
Overload flowrate	Q ₄	m ³ /h	3.125	3.125	5	7.875	12,5	20	31.25
Transitional flowrate	Q ₂	l/h	25	25	40	63	100	160	250
Minimum flowrate	Q ₁	l/h	16	16	25	39	63	100	156
Measuring range	Q ₃ /Q ₁	H	R160						
	Q ₃ /Q ₁	V	R80						
Maximum water temperature	MAT	°C	30						
Maximum working pressure	MAP	bar	16						
Flow capacity at 1 bar pressure loss		m ³ /h	4.1	4.1	6.8	8.5	13.1	21.6	32.8
Pressure loss class	Δp	bar	0.63	0.63	0.4	0.63	0.63	0.63	0.63
Flow profile sensitivity class			U0, D0						
Climatic environment			closed spaces, 5°C to 55°C						
Mechanical environment			M1						
Electromagnetic environment			E1						

Installation position

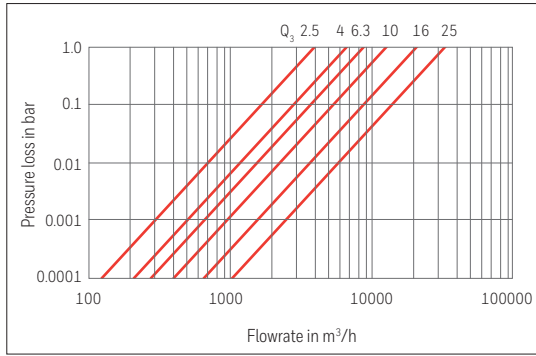
For all installations



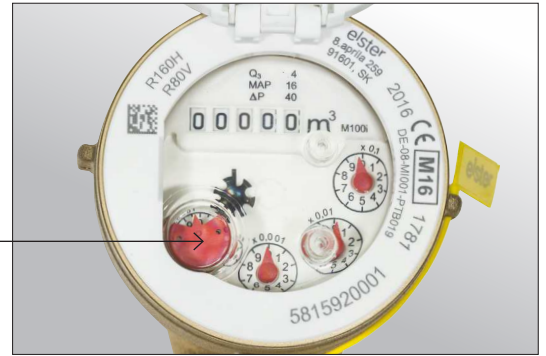
horizontal installation
also inclined up to 90°



M 100i Multi-jet Meter ARTIST Technical Data



eSens interface for communication modules



Dimensions (Standard portfolio, others on request)

Nominal size	DN	mm	MNR						MNR-S			
			15	20	25	32	40	50	20	25	40	
D ₁ Meter connection thread	ISO 228/1	inches	G ¾ B	G 1 B	G 1 ¼ B	G 1 ½ B	G 2 B	G 2 ½ B	Flange	G 1 B	G 1 ¼ B	G 2 B
Connection pipe thread	ISO 7/1	inches	R ½	R ¾	R 1	R 1 ¼	R 1 ½	R 2	–	R ¾	R 1	R 1 ½
L ₁ Length (others on request)		mm	165	190	260	260	300	270		105	150	200
B ₁ Width (head ring)		mm	100									
Total width		mm	100	100	100	100	122	125	165	100	100	119
B ₂ Distance pipe axis to meter axis		mm	–	–	–	–	–	–	–	80	94	120
H ₁ Centerline height		mm	31	31	43	43	46	68		–	–	–
H ₂ Overall height		mm	115	115	130	130	153	160		135	151	195
Weight		kg	1.5	1.5	2.5	2.5	3.7	4.5	8.5	1.8	2.6	5.5

Dimension drawing

