

GAMME STANDARD

Distributeurs commande pneumatique |

Pneumatically piloted valves



INFORMATIONS GÉNÉRALES GENERAL INFORMATION

- Distributeurs 3/2 - 5/2 - 5/3 avec raccordements G1/8" - G1/4" - G3/8" - G1/2"
3/2 - 5/2 - 5/3 spool valves with G1/8" - G1/4" - G3/8" G1/2", threaded ports
- Montage en ligne, sur embases multiples ou monobloc (Voir embases p.136 à 141)
Installation in-line, gang or manifold mounted
- Large gamme de pilotages
Comprehensive range of actuations
- Versions avec fonctions logiques intégrées
Versions with integrated logic element
- Distributeurs spéciaux sur demande
Special versions on request

Matériaux

Corps : Aluminium anodisé
Ressort : Inox
Joints : NBR
Tiroir : Aluminium nickelé
Parties internes : Laiton OT58

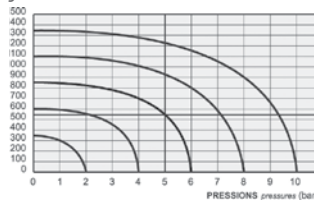
Materials

Body : Aluminium 11S
Springs : Stainless steel
Seals : NBR
Spool : Nickel plated aluminium
Internal parts : Brass OT58

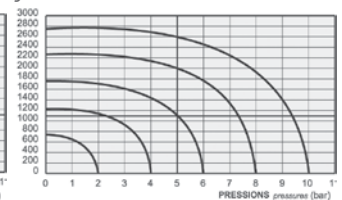
Débit nominal à 6 bar

G1/8" : 550 NL/min G1/4" : 1100 NL/min
G3/8" : 2250 NL/min G1/2" : 4600 NL/min

Débit (NL/min) - G1/8" flow rates



Débit (NL/min) - G1/4" flow rates



| | G1/8" | G1/4" | G1/2" |
|--------------------------|-------------------------------------|-------------------------------------|------------------------------------|
| Monostable Monostable | TRA (14) : 6 ms TRR (12) : 15 ms | TRA (14) : 7 ms TRR (12) : 15 ms | TRA (14) : 4 ms TRR (12) : 8 ms |
| Bistable Bistable | TRA (14) : 7 ms TRR (12) : 7 ms | TRA (14) : 7 ms TRR (12) : 7 ms | TRA (14) : 4 ms TRR (12) : 4 ms |

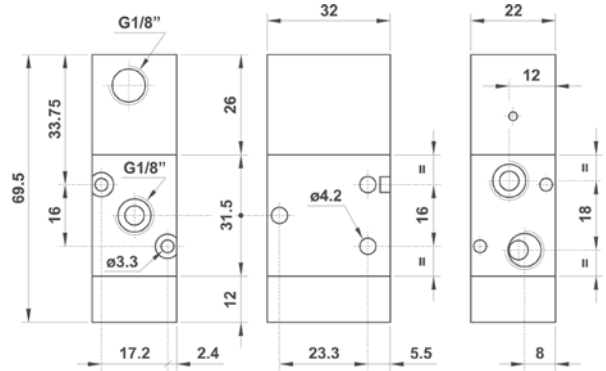
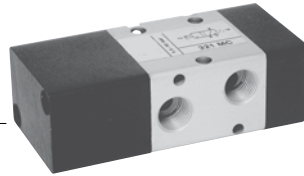
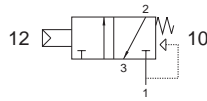
| | | |
|---|--|-------------------------------|
| Diamètre nominal Nominal orifice | G1/8" : 5 mm - G1/4" : 7.5 mm G3/8" : 10mm - G1/2" : 13mm | |
| Température de travail Temperature range | max +60°C | |
| Pression de travail Working pressure | max 10 bar max 1 MPa | |
| Pression de commande Actuating pressure | monostable [monostable] | bistable [bistable] |
| | 2.5 ... 10 bar 0.25 ... 1 MPa | 1 ... 10 bar 0.1 ... 1 MPa |
| Fluide Fluid | air filtré 50µ avec ou sans lubrification 50µ filtered lubricated or non lubricated air | |

GAMME STANDARD

Distributeurs commande pneumatique G1/8" | *Pneumatically piloted valves*

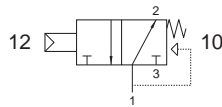
321 MC

Distributeur 3/2 NF monostable
commande pneumatique
rappel à combinaison de ressort
raccordement G1/8"
*3/2 NC pneumatic pilot
spring return - G1/8"*



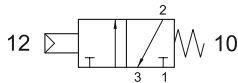
321 MCA

Distributeur 3/2 NO monostable
commande pneumatique
rappel à combinaison de ressort
raccordement G1/8"
*3/2 NO pneumatic pilot
spring return - G1/8"*

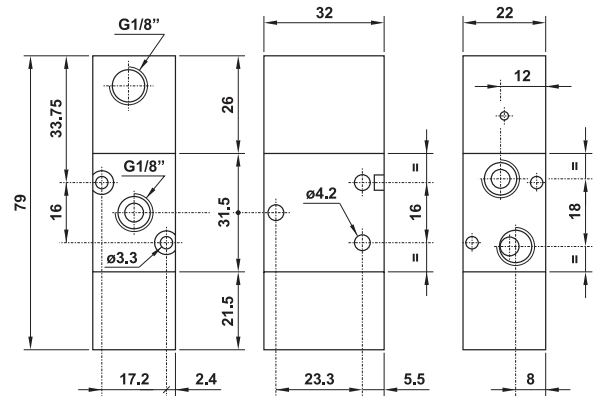


321 MRC

Distributeur 3/2 NF monostable
commande pneumatique
rappel avec ressort renforcé
raccordement G1/8"
*3/2 NC pneumatic pilot
spring return - G1/8"*

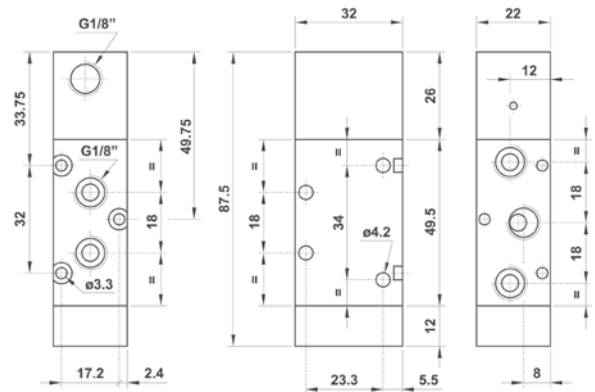
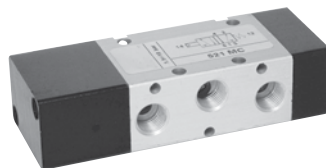
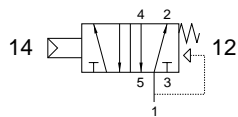


Pression de travail : -0,9 à 10 bar (-0,09 à 0,1 MPa)
Pression de commande : 2,5 à 10 bar (0,25 à 0,1 MPa)
*Work pressure : -0,9 à 10 bar (0-0,09 à 0,1 MPa)
Pilot pressure : 2,5 à 10 bar (0,25 à 0,1 MPa)*



521 MC

Distributeur 5/2 monostable
commande pneumatique
rappel à combinaison de ressort
raccordement G1/8"
*5/2 pneumatic pilot
spring return - G1/8"*



GAMME STANDARD

Distributeurs commande pneumatique G1/8" |

Pneumatically piloted valves

521 MRC

Distributeur 5/2 monostable
commande pneumatique
rappel avec ressort renforcé
raccordement G1/8"

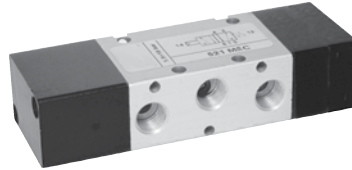
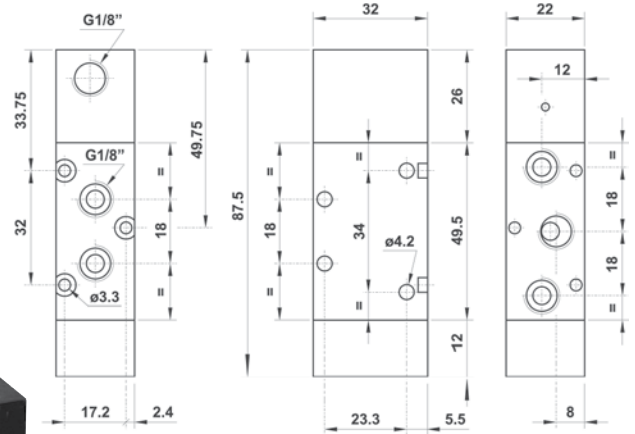
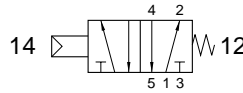
5/2 pneumatic pilot
reinforced spring return - G1/8"

Pression de travail : -0,9 à 10 bar (-0,09 à 0,1 MPa)

Pression de commande : 2,5 à 10 bar (0,25 à 0,1 MPa)

Work pressure : -0,9 à 10 bar (0-0,09 à 0,1 MPa)

Pilot pressure : 2,5 à 10 bar (0,25 à 0,1 MPa)

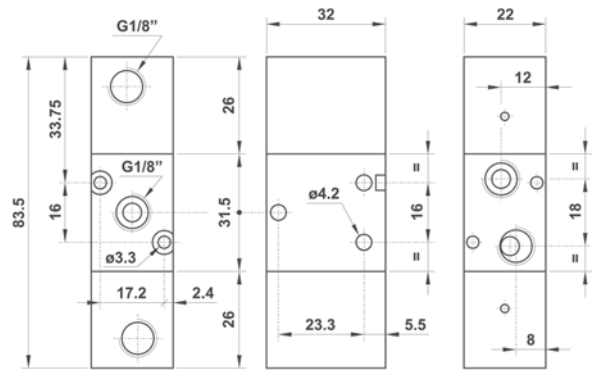
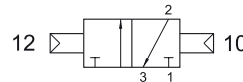


321 CC

Distributeur 3/2 bistable
commande pneumatique
raccordement G1/8"

3/2 double pneumatic pilot - G1/8"

Version Atex 2GD T6 : 321CC.ATEX

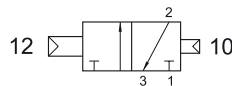


321 CCD

Distributeur 3/2 bistable différentiel
commande pneumatique
raccordement G1/8"

3/2 double pneumatic pilot
with differential - G1/8"

Version Atex 2GD T6 : 321CCD.ATEX

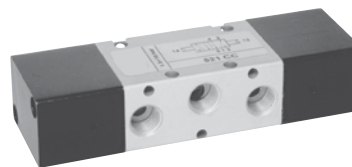
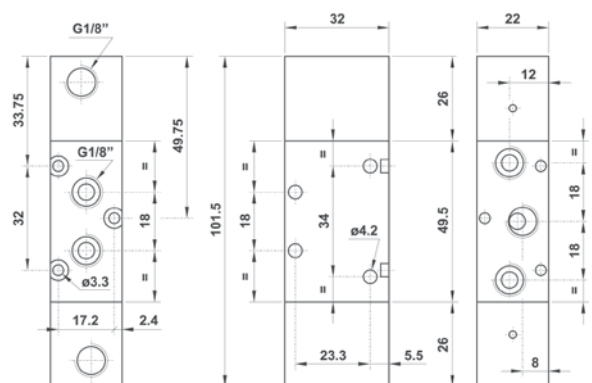
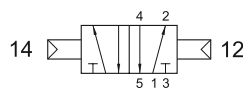


521 CC

Distributeur 5/2 bistable
commande pneumatique
raccordement G1/8"

5/2 double pneumatic pilot - G1/8"

Version Atex 2GD T6 : 521CC.ATEX

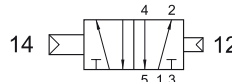
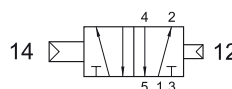


521 CCD

Distributeur 5/2 bistable différentiel
commande pneumatique
raccordement G1/8"

5/2 double pneumatic pilot
with differential - G1/8"

Version Atex 2GD T6 : 521CCD.ATEX



GAMME STANDARD

Distributeurs commande pneumatique G1/8" |

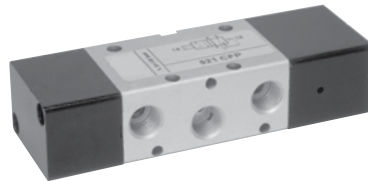
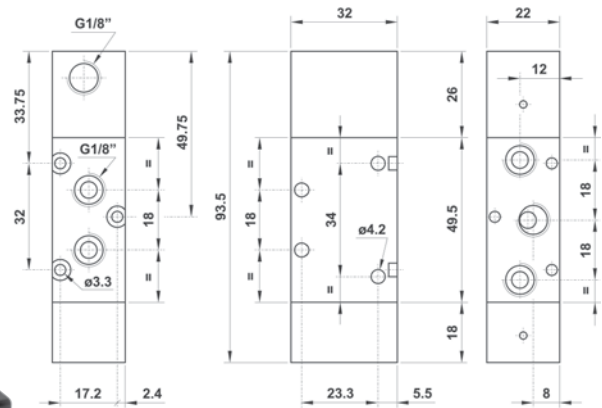
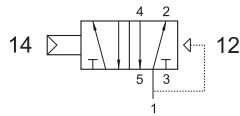
Pneumatically piloted valves

521 CFP

Distributeur 5/2 monostable
commande pneumatique
rappel ressort pneumatique
raccordement G1/8"

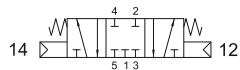
*5/2 pneumatic pilot
pneumatic spring return - G1/8"*

Version Atex 2GD T6 : 521CFP.ATEX



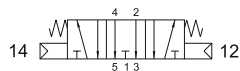
5213C CC

Centre fermé
Closed center



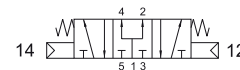
5213A CC

Centre ouvert
Closed center



5213P CC

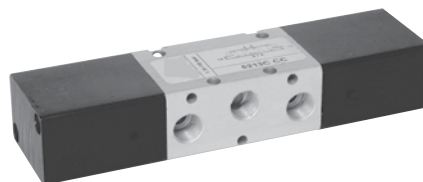
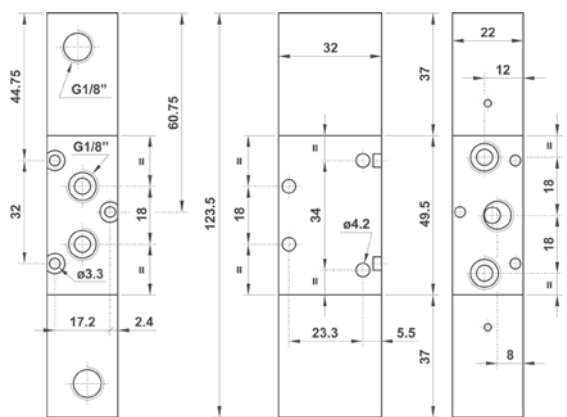
Centre en pression
Pressurized center



Distributeur 5/3
commande pneumatique
raccordement G1/8"

5/3 double pneumatic pilot - G1/8"

Version Atex 2GD T6 : 5213*CC.ATEX



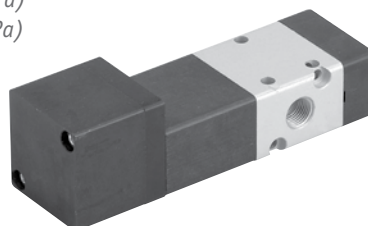
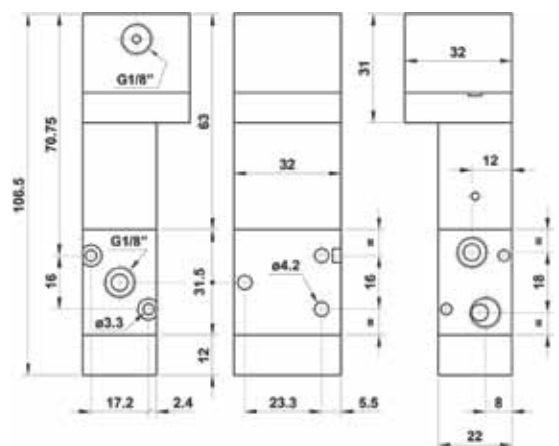
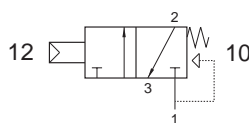
321 MCQ

Distributeur 3/2 NF monostable
commande pneumatique 0,3 bar
rappel à combinaison de ressort
raccordement G1/8"

*3/2 NC pneumatic pilot 0.3 bar
spring return - G1/8"*

Version Atex 2GD T6 : 321MCQ.ATEX

Pression de travail : min. 2.5 bar (0.25 MPa)
Pression de commande : min. 0.3 bar (0.03 MPa)
*Work pressure : min. 2.5 bar (0.25 MPa)
Pilot pressure : min. 0.3 bar (0.03 MPa)*



GAMME STANDARD

Distributeurs commande pneumatique G1/8" |

Pneumatically piloted valves

321 MCS

Distributeur 3/2 NF monostable
commande pneumatique 0,6 bar
rappel à combinaison de ressort
raccordement G1/8"

3/2 NC pneumatic pilot 0.6 bar
spring return - G1/8"

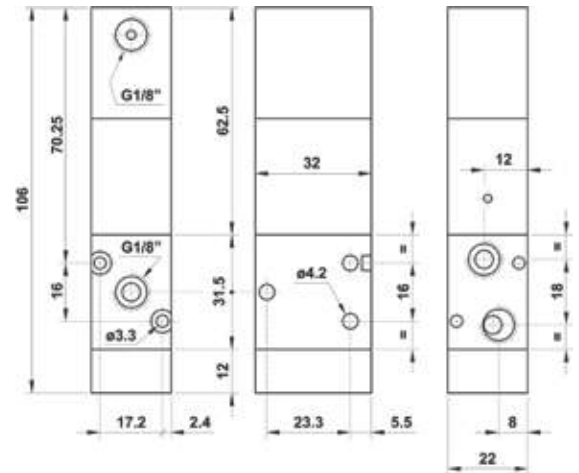
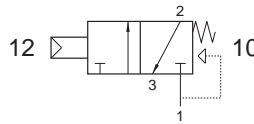
Version Atex 2GD T6 : 321MCS.ATEX

Pression de travail : min. 2.5 bar (0.25 MPa)

Pression de commande : min. 0.6 bar (0.06 MPa)

Work pressure : min. 2.5 bar (0.25 MPa)

Pilot pressure : min. 0.6 bar



521 MCS

Distributeur 5/2 monostable
commande pneumatique 0,6 bar
rappel à combinaison de ressort
raccordement G1/8"

5/2 pneumatic pilot 0.6 bar
spring return - G1/8"

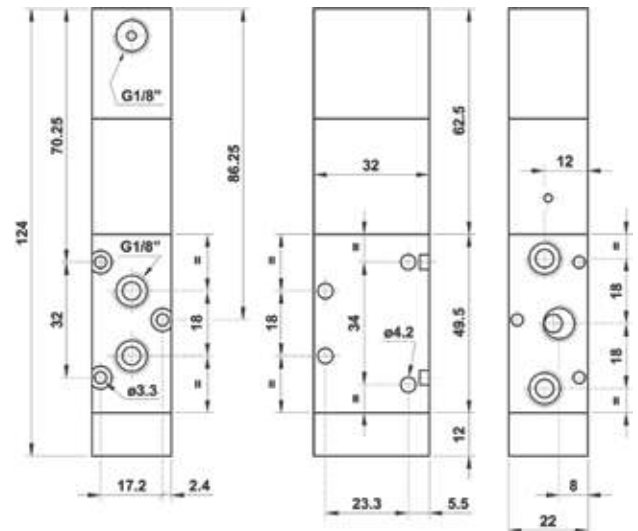
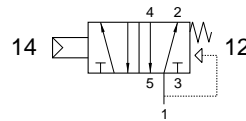
Version Atex 2GD T6 : 521MCS.ATEX

Pression de travail : min. 2.5 bar (0.25 MPa)

Pression de commande : min. 0.6 bar (0.06 MPa)

Work pressure : min. 2.5 bar (0.25 MPa)

Pilot pressure : min. 0.6 bar (0.06 MPa)



521 MCQ

Distributeur 5/2 0,3 bar monostable
commande pneumatique 0,3 bar
rappel à combinaison de ressort
raccordement G1/8"

5/2 pneumatic pilot 0.3 bar
spring return - G1/8"

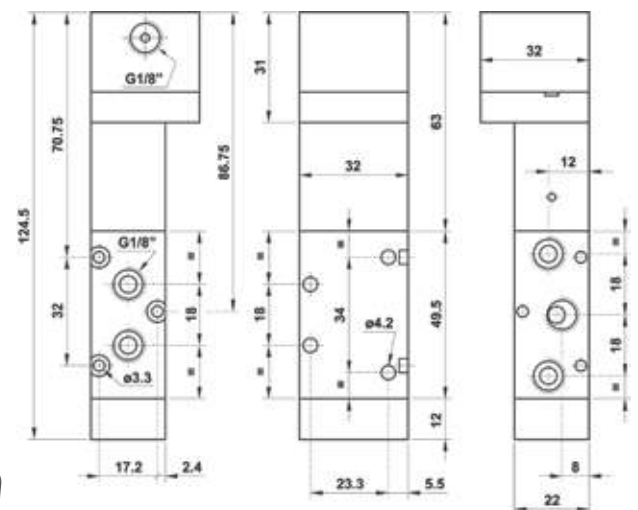
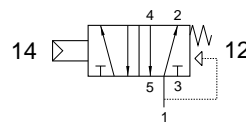
Version Atex 2GD T6 : 521MCQ.ATEX

Pression de travail : min. 2.5 bar (0.25 MPa)

Pression de commande : min. 0.3 bar (0.03 MPa)

Work pressure : min. 2.5 bar (0.25 MPa)

Pilot pressure : min. 0.3 bar (0.03 MPa)



GAMME STANDARD

Distributeurs commande pneumatique G1/4" |

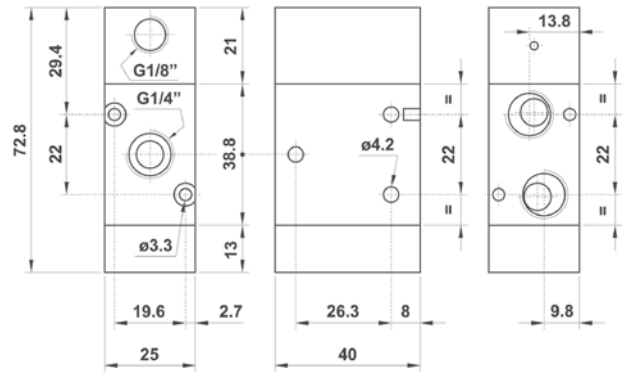
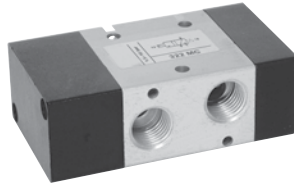
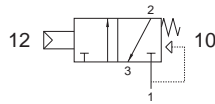
Pneumatically piloted valves

322 MC

Distributeur 3/2 NF monostable
commande pneumatique
rappel à combinaison de ressort
raccordement G1/4"

*3/2 NC pneumatic pilot
spring return - G1/4"*

Version Atex 2GD T6 : 322MC.ATEX

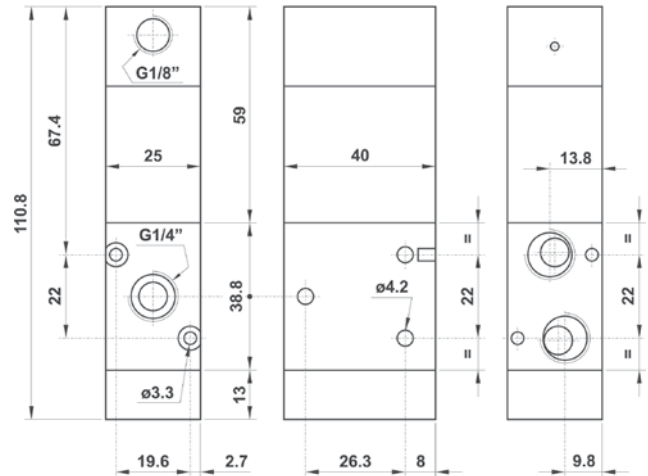
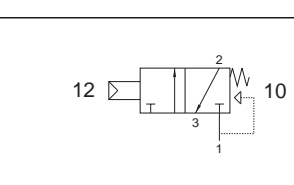
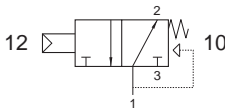


322 MCA

Distributeur 3/2 NO monostable
commande pneumatique
rappel à combinaison de ressort
raccordement G1/4"

*3/2 NO pneumatic pilot
spring return - G1/4"*

Version Atex 2GD T6 : 322MCA.ATEX



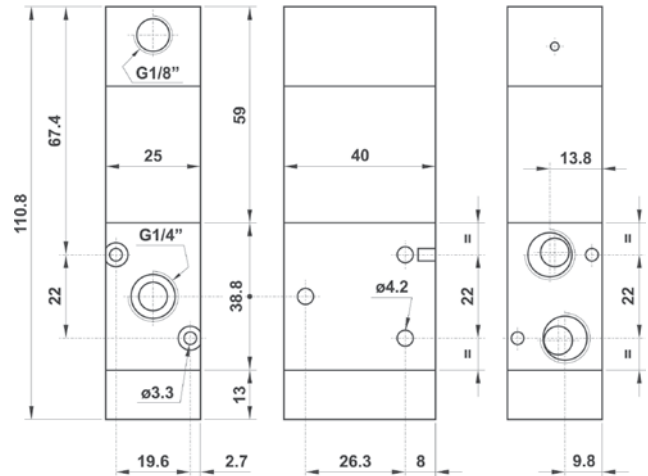
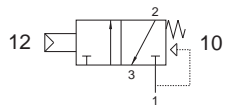
322 MCS

Distributeur 3/2 NF monostable
commande pneumatique 0,6 bar
rappel à combinaison de ressort
raccordement G1/4"

*3/2 NC pneumatic pilot 0.6 bar
spring return - G1/4"*

Version Atex 2GD T6 : 322MCS.ATEX

Pression de travail : min. 2.5 bar (0.25 MPa)
Pression de commande : min. 0.6 bar (0.06 MPa)
*Work pressure : min. 2.5 bar (0.25 MPa)
Pilot pressure : min. 0.6 bar (0.06 MPa)*

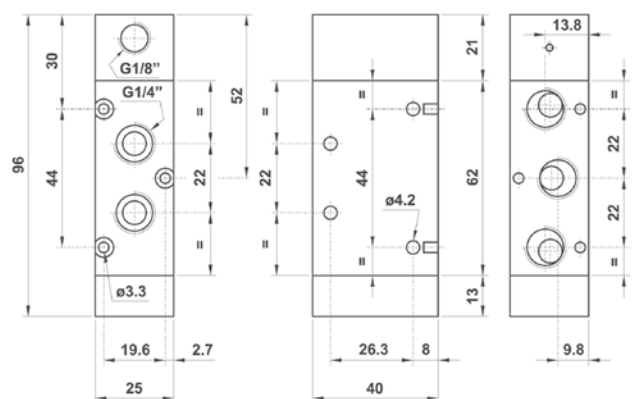
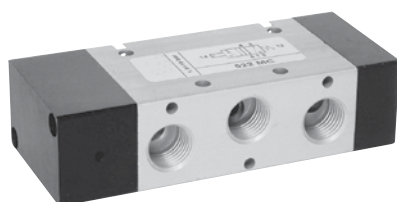
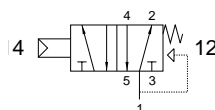


522 MC

Distributeur 5/2 monostable
commande pneumatique
rappel à combinaison de ressort
raccordement G1/4"

*5/2 pneumatic pilot
spring return - G1/4"*

Version Atex 2GD T6 : 522MC.ATEX



GAMME STANDARD

Distributeurs commande pneumatique G1/4" |

Pneumatically piloted valves

522 MCS

Distributeur 5/2 monostable
commande pneumatique 0,6 bar
rappel à combinaison de ressort
raccordement G1/4"

5/2 pneumatic pilot 0.6 bar
spring return - G1/4"

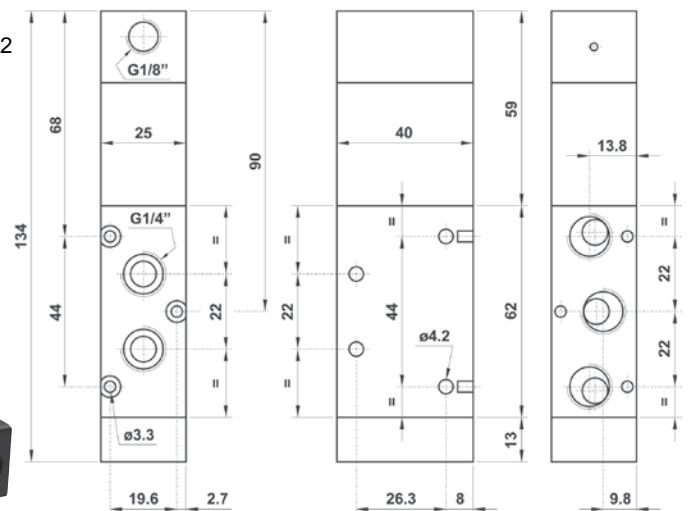
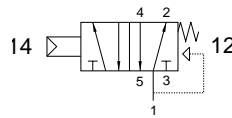
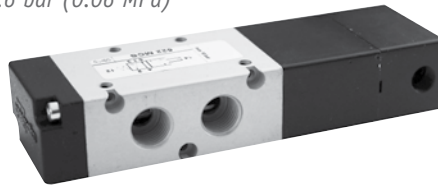
Version Atex 2GD T6 : 522MCS.ATEX

Pression de travail : min. 2.5 bar (0.25 MPa)

Pression de commande : min. 0.6 bar (0.06 MPa)

Work pressure : min. 2.5 bar (0.25 MPa)

Pilot pressure : min. 0.6 bar (0.06 MPa)

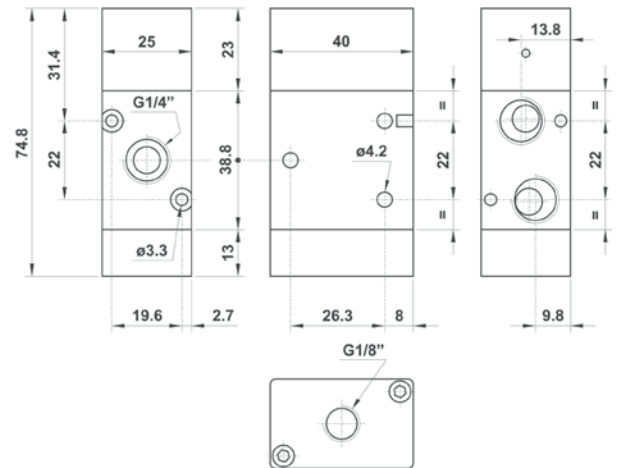
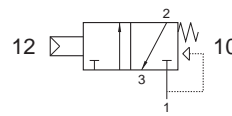
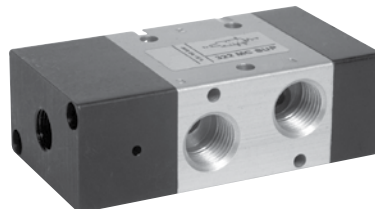


322 MC SUP

Distributeur 3/2 NF monostable
commande pneumatique
rappel à combinaison de ressort
raccordement G1/4"

(pilotage pneumatique en bout)
3/2 NC pneumatic pilot on the top
spring return - G1/4"

Version Atex 2GD T6 : 322MCSUP.ATEX

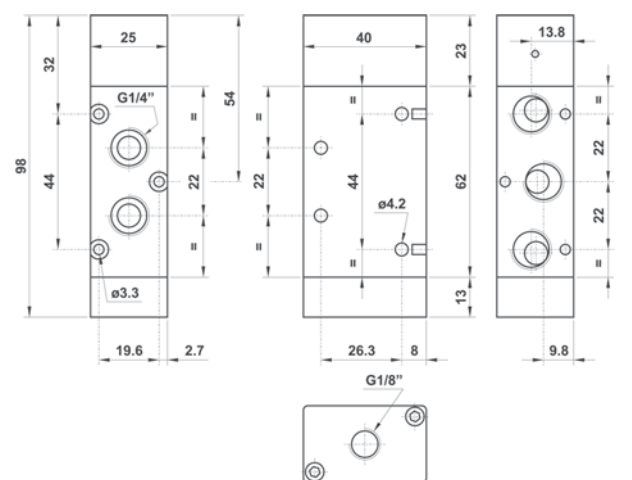
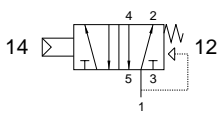
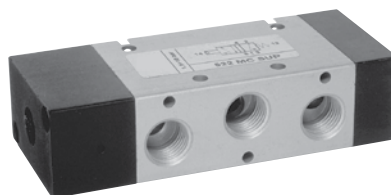


522 MC SUP

Distributeur 5/2 monostable
commande pneumatique
rappel à combinaison de ressort
raccordement G1/4"

(pilotage pneumatique en bout)
5/2 pneumatic pilot on the top
spring return - G1/4"

Version Atex 2GD T6 : 522MCSUP.ATEX



GAMME STANDARD

Distributeurs commande pneumatique G1/4" |

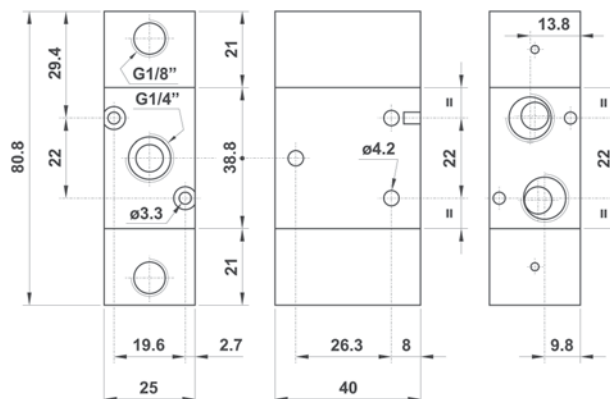
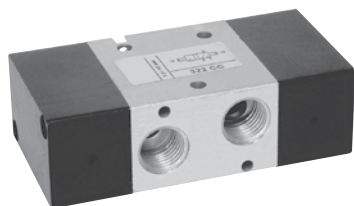
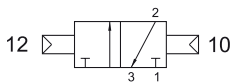
Pneumatically piloted valves

322 CC

Distributeur 3/2 bistable
commande pneumatique
raccordement G1/4"

3/2 double pneumatic pilot - G1/4"

Version Atex 2GD T6 : 322CC.ATEX

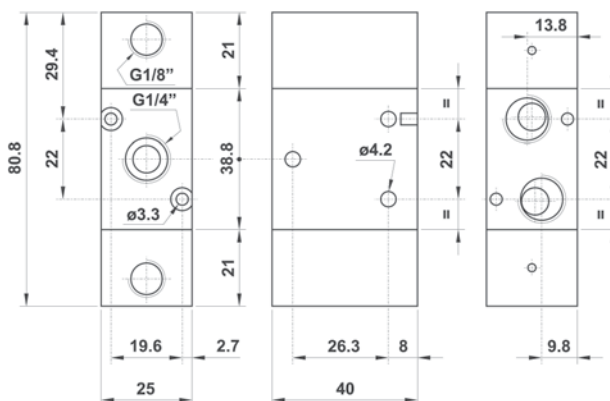
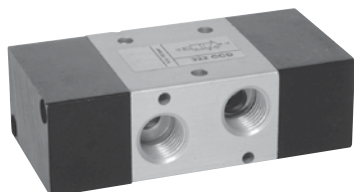
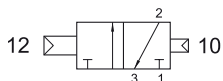


322 CCD

Distributeur 3/2 bistable différentiel
raccordement G1/4"

*3/2 double pneumatic pilot
with differential - G1/4"*

Version Atex 2GD T6 : 322CCD.ATEX



GAMME STANDARD

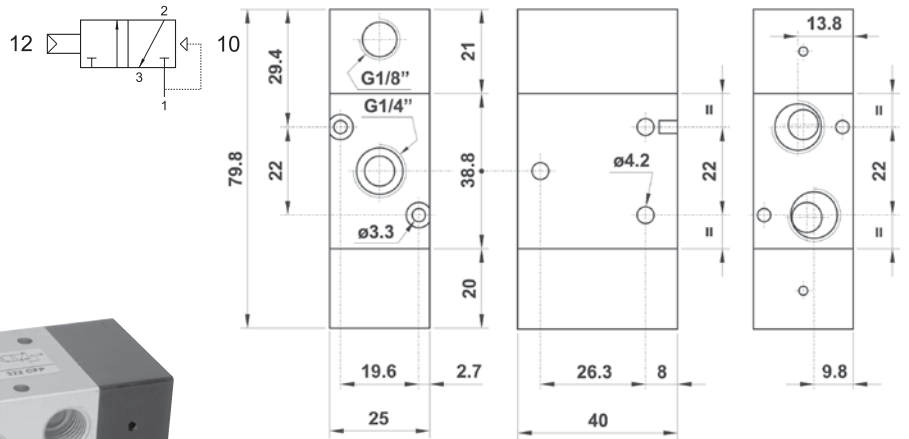
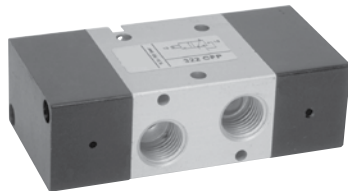
Distributeurs commande pneumatique G1/4" |

Pneumatically piloted valves

322 CFP

Distributeur 3/2 NF monostable
commande pneumatique
rappel ressort pneumatique
raccordement G1/4"
3/2 NC pneumatic pilot
pneumatic spring return - G1/4"

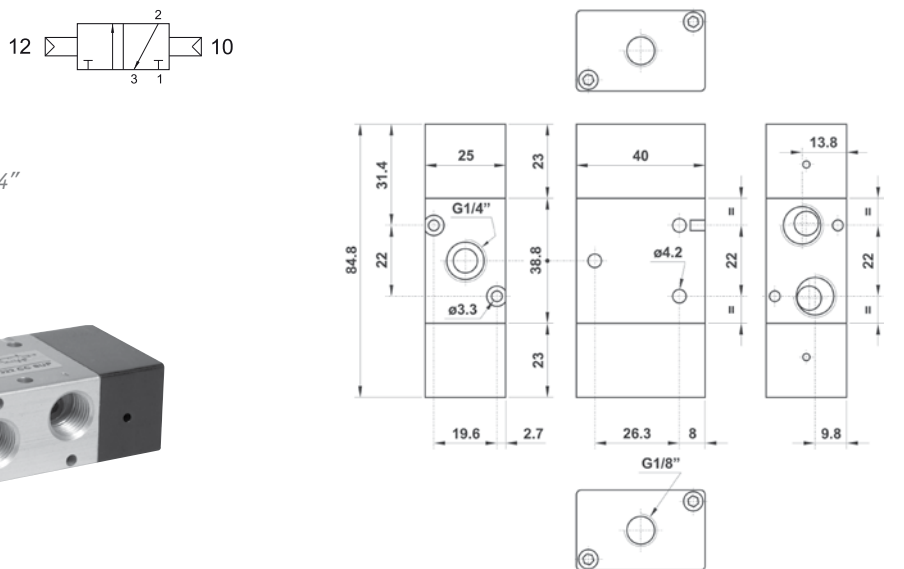
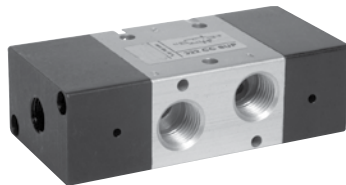
Version Atex 2GD T6 : 322CFP.ATEX



322 CC SUP

Distributeur 3/2 bistable
commande pneumatique
raccordement G1/4"
(pilotages pneumatiques en bout)
3/2 double pneumatic pilot on the top - G1/4"

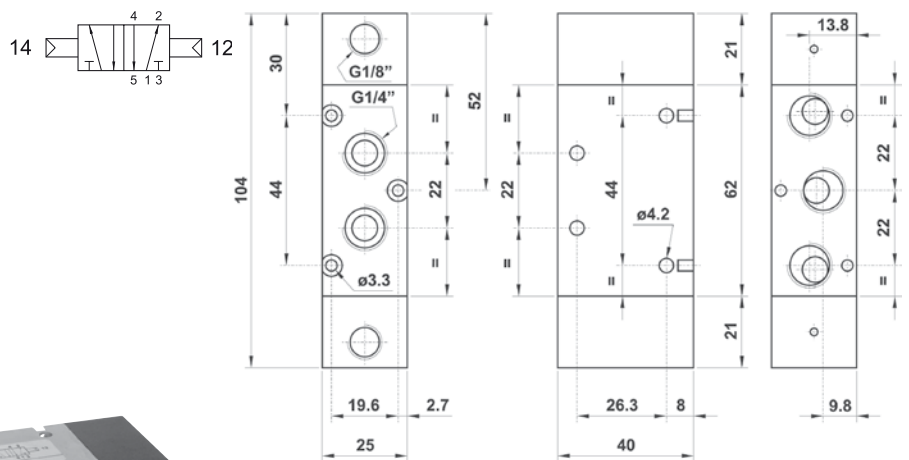
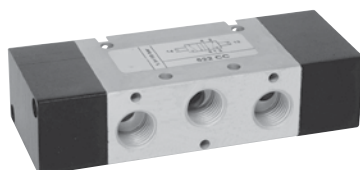
Version Atex 2GD T6 : 322CCSUP.ATEX



522 CC

Distributeur 5/2 bistable
commande pneumatique
raccordement G1/4"
5/2 double pneumatic pilot - G1/4"

Version Atex 2GD T6 : 522CC.ATEX



GAMME STANDARD

Distributeurs commande pneumatique G1/4" |

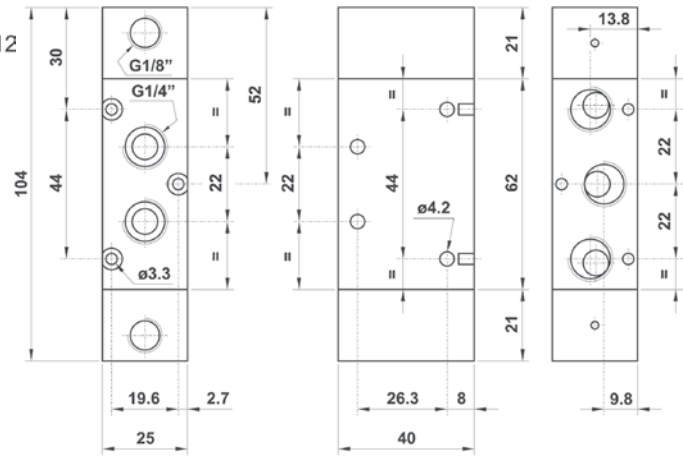
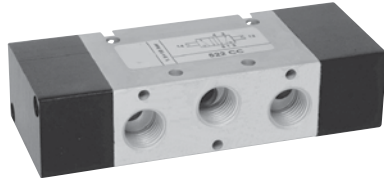
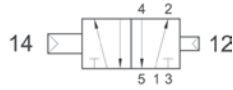
Pneumatically piloted valves

522 CCD

Distributeur 5/2 bistable différentiel
commande pneumatique
raccordement G1/4"

5/2 double pneumatic pilot with differential - G1/4"

Version Atex 2GD T6 : 522CCD.ATEX

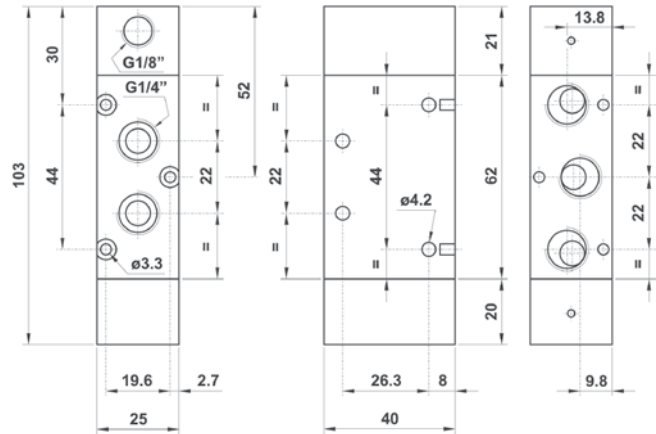
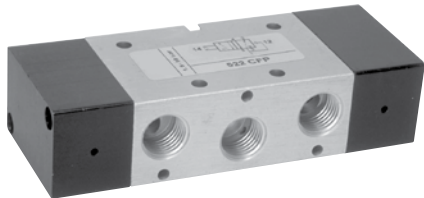
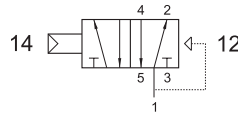


522 CFP

Distributeur 5/2 monostable
commande pneumatique
rappel ressort pneumatique
raccordement G1/4"

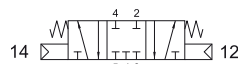
*5/2 pneumatic pilot
pneumatic spring return - G1/4"*

Version Atex 2GD T6 : 522CFP.ATEX



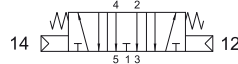
5223C CC

Centre fermé
Closed center



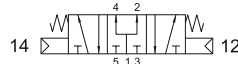
5223A CC

Centre ouvert
Open center



5223P CC

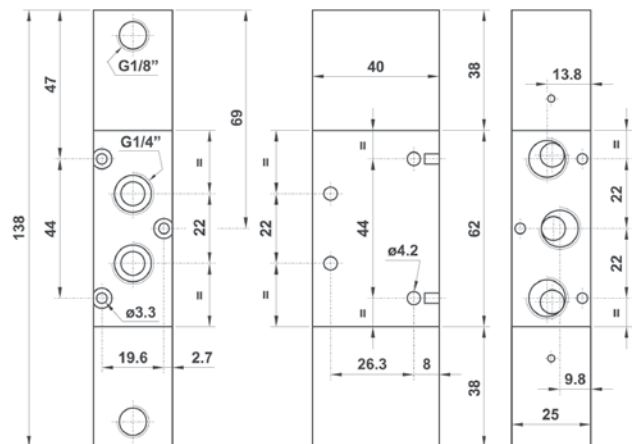
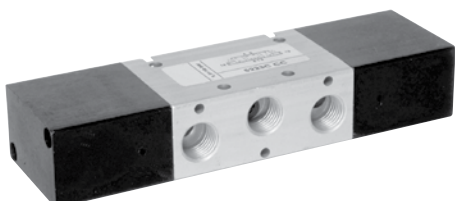
Centre en pression
Pressurized center



Distributeur 5/3
commande pneumatique
raccordement G1/4"

5/3 double pneumatic pilot - G1/4"

Version Atex 2GD T6 : 5223*CC.ATEX



GAMME STANDARD

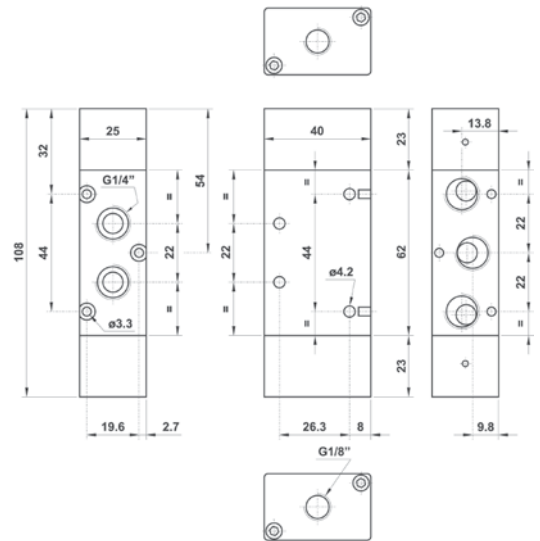
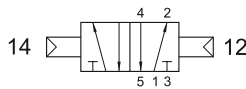
Distributeurs commande pneumatique G1/4" |

Pneumatically piloted valves

522 CC SUP

Distributeur 5/2 bistable
commande pneumatique
raccordement G1/4"
(pilotages pneumatiques en bout)
5/2 double pneumatic pilot on the top - G1/4"

Version Atex 2GD T6 : 522CCSUP.ATEX

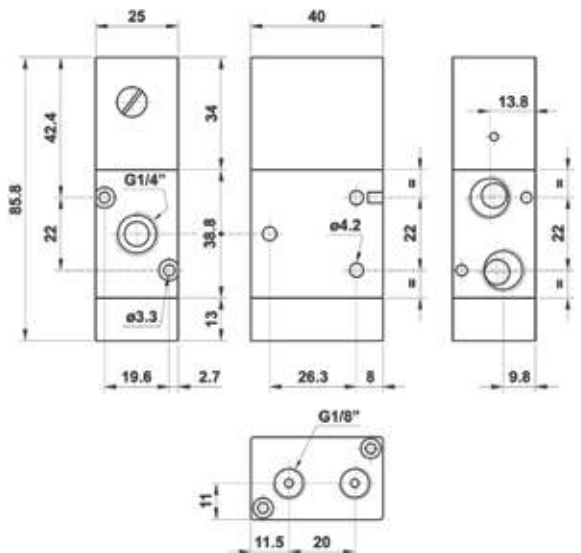
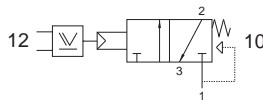


322 ORM

Distributeur 3/2 NF monostable
par cellule **OU** intégrée
rappel à combinaison de ressort
raccordement G1/4"

*3/2 NC pneumatic pilot with integrated OR element
spring return - G1/4"*

Version Atex 2GD T6 : 322ORM.ATEX

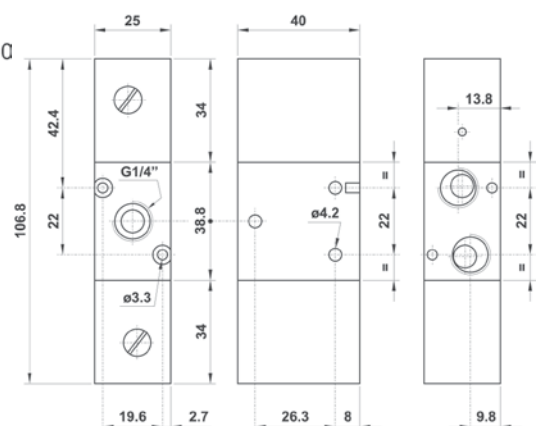
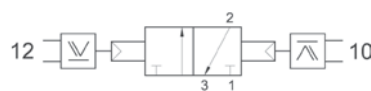
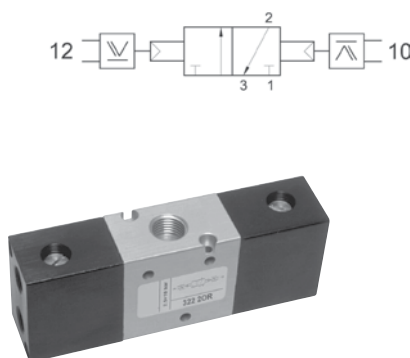
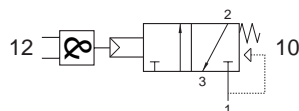


322 ANDM

Distributeur 3/2 NF monostable
par cellule **ET** intégrée
rappel à combinaison de ressort
raccordement G1/4"

3/2 NC pneumatic pilot with integrated AND element - spring return - G1/4"

Version Atex 2GD T6 : 322ANDM.ATEX

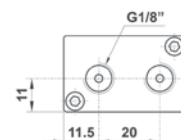
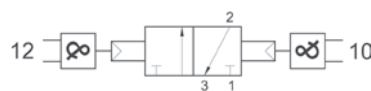


322 2AND

Distributeur 3/2 bistable
par cellules **ET** intégrées
raccordement G1/4"

*3/2 double pneumatic pilot
with integrated AND element - G1/4"*

Version Atex 2GD T6 : 3222AND.ATEX



GAMME STANDARD

Distributeurs commande pneumatique G1/4" |

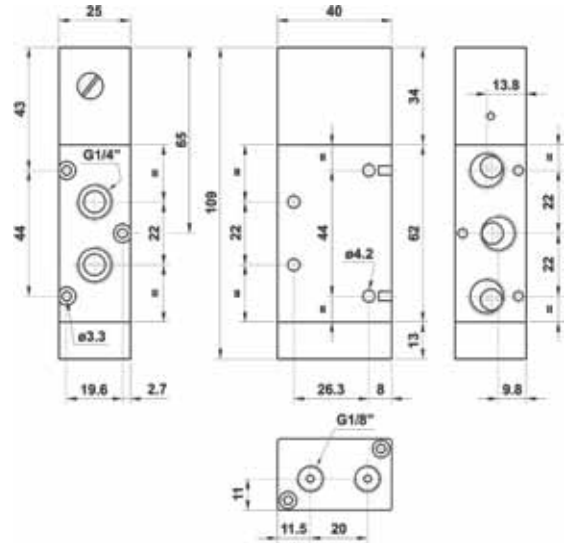
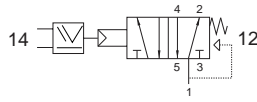
Pneumatically piloted valves

522 ORM

Distributeur 5/2 monostable
par cellule **OU** intégrée
bistable
raccordement G1/4"

5/2 pneumatic pilot with integrated **OR** element
spring return - G1/4"

Version Atex 2GD T6 : 522ORM.ATEX

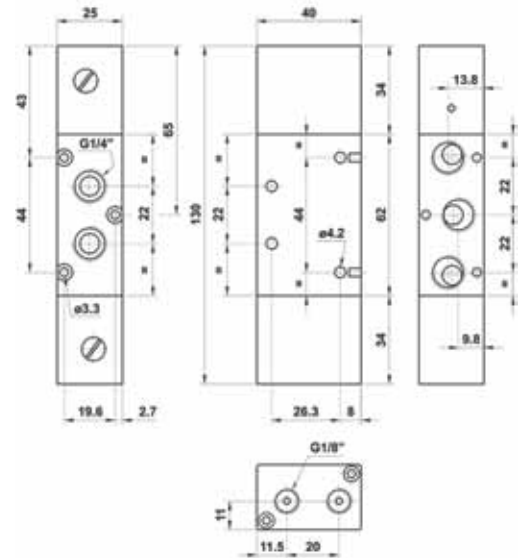
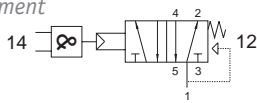


522 ANDM

Distributeur 5/2 monostable
par cellule **ET** intégrée
bistable
raccordement G1/4"

5/2 pneumatic pilot with integrated **AND** element
spring return - G1/4"

Version Atex 2GD T6 : 522ANDM.ATEX

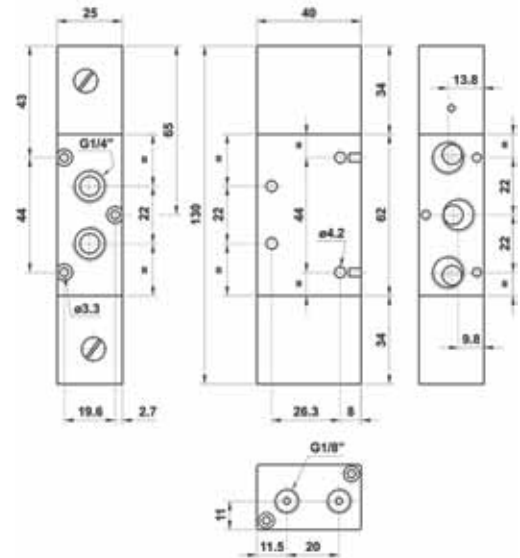


522 2OR

Distributeur 5/2 bistable
par cellules **OU** intégrées
raccordement G1/4"

5/2 double pneumatic pilot
with integrated **OR** element - G1/4"

Version Atex 2GD T6 : 5222OR.ATEX



522 2AND

Distributeur 5/2 bistable
par cellules **ET** intégrées
raccordement G1/4"

5/2 double pneumatic pilot
with integrated **AND** element - G1/4"

Version Atex 2GD T6 : 5222AND.ATEX

