

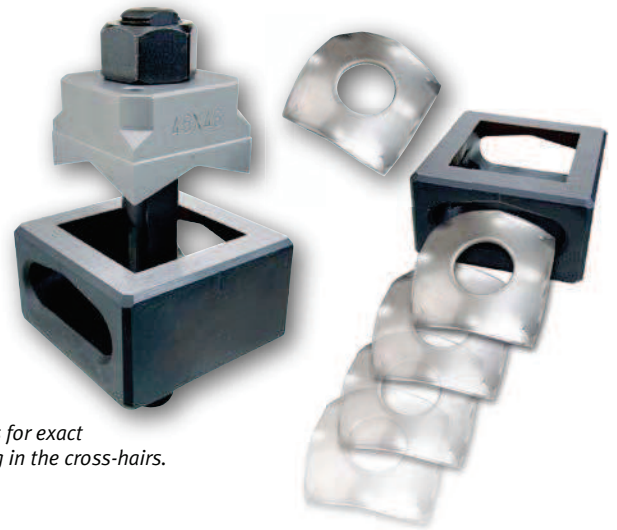


PUNCHING TOOLS – SQUARE



Made by ALFRA Germany

- All punches have a lateral ejection for the waste piece. No jamming inside the die.
- For mild steel (S235).
- The punches are delivered in robust and practical plastic cases.
- When placing an order for hydraulic operation please specify the hydraulic model.



4 markings for exact positioning in the cross-hairs.

Lateral ejection – utility model no. G9104064.7

Spare parts

Size mm	Max. material thickness mm / (S235)	For operation by		Prod.-No. Puncher	Prod.-No. Tie bolt	Prod.-No. Lock nut	Prod.-No. BB forcing nut	Prod.-No. Adapter for hydraulics	Pre-drilling Ø mm
12.7 x 12.7	1.75	■	■	01300	01348	01355	01352	01353	10
15.8 x 15.8	1.75	■	■	01301	01348	01355	01352	01353	10
19.0 x 19.0	2.0	■	■	01302	01347	01351	01352	01353	14
22.2 x 22.2	2.0	■	■	01303	01347	01351	01352	01353	14
24.0 x 24.0	2.0	■	■	01331	01347	01351	01352	01353	14
25.4 x 25.4	2.0	■	■	01304	01360	01354	01359	01361	17
45.5 x 45.5	3.0		■	01313	01345	01350			20
46.0 x 46.0	3.0		■	01305	01345	01350			20
50.8 x 50.8	3.0		■	01306	01344	01350			24
68.0 x 68.0	3.0		■	01308	01344	01349			24
92.0 x 92.0	3.0		■	01309	01343	01349			30
125.0 x 125.0	3.0		■	01431	01343	01356			30
138.0 x 138.0	3.0		■	01311	01343	01356			30

PUNCHING TOOLS FOR STAINLESS STEEL – SQUARE



Made in Germany by ALFRA

- Special version for stainless steel (F = 600 N/mm²) and mild steel (S235).

Spare parts

Size mm	Max. material thickness mm / VA	For operation by		Prod.-No. Puncher	Prod.-No. Tie bolt	Prod.-No. Lock nut	Pre-drilling Ø mm
46.0 x 46.0	2.0	■		01312	01345	01350	20
68.0 x 68.0	2.0	■		01315	01344	01349	24
92.0 x 92.0	2.0	■		01316	01343	01349	30

- Other sizes available on request.